

S 1/2 S 1/2 SEC. 27 & N 1/2 SEC. 34, T 01 S, R 12 W, S. M.

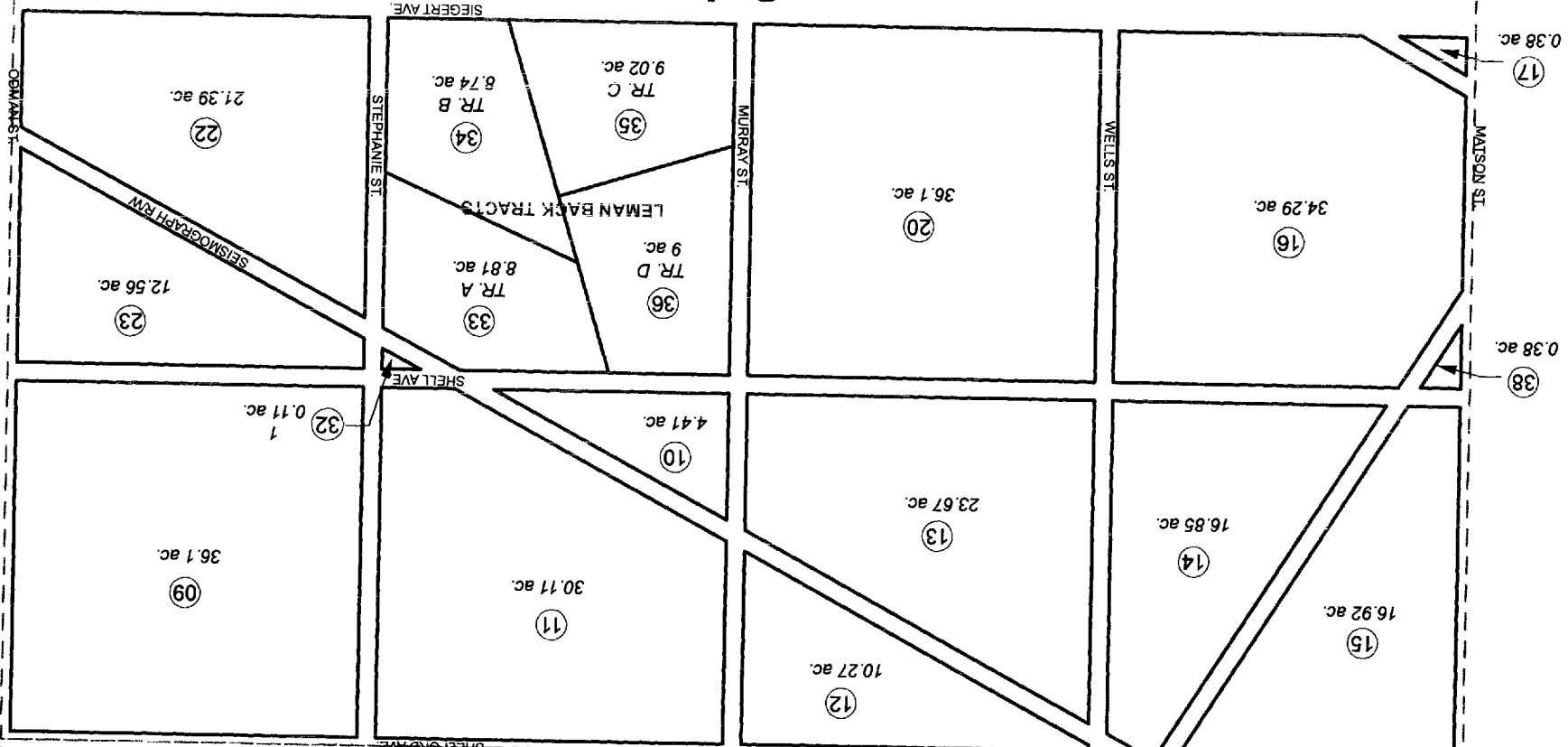
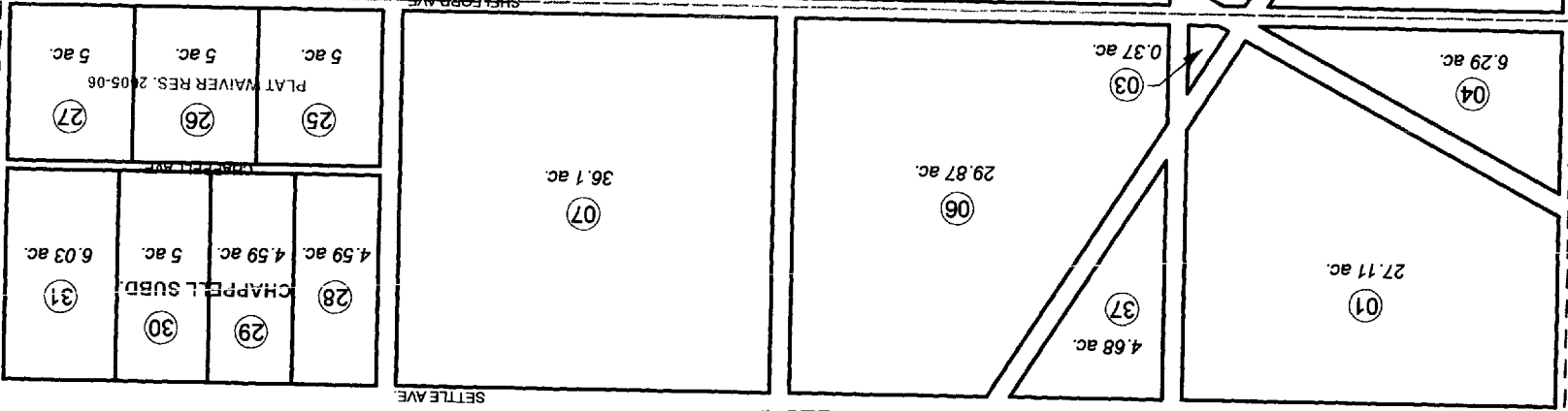
185-506

OSK

BA

501

27



34

507



For 2011 assessment roll		
Delete	Add	Revise
02,05	37,38	01,03-04, 06,10-17, 22,23

DECEMBER 20, 2010

(ACREAGE CHANGE)

Assessor's Map
Kenal Peninsula Borough

PLAT WAIVER RES 2005-06 HM2005-000961
CHAPPELL SUB HM2007039
LEMAN BACK TRACTS HM2009042

This map is prepared for Kenal Peninsula Borough Assessing Dept. use only and is not intended for conveyance nor is it a survey. Note- Assessor's block Numbers Shown in Ellipses and Parcel Numbers Shown in Circles