

PORTION SECTIONS 16 AND 17, T4S, R10W, SEWARD MERIDIAN

185-169

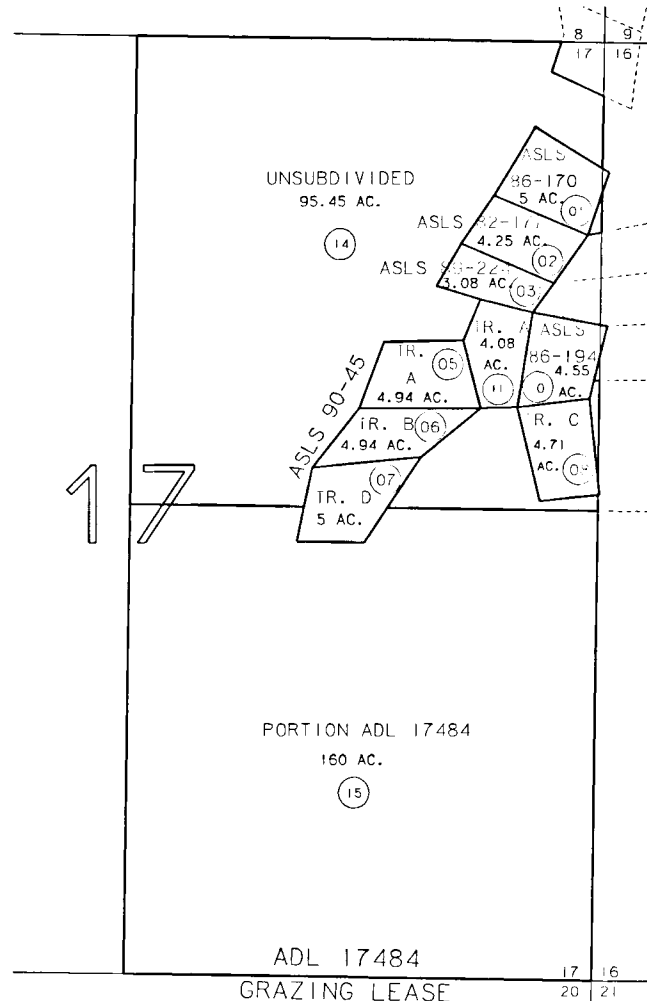
253

252

259

163

164



22

NOTE - Assessor's Block Numbers Shown In Ellipses
Assessor's Parcel Numbers Shown In Circles

Assessor's Map

Kenai Peninsula Borough

ALASKA STATE LAND SURVEY 82-177
ALASKA STATE LAND SURVEY 86-054
ALASKA STATE LAND SURVEY 86-170
ALASKA STATE LAND SURVEY 86-194
ALASKA STATE LAND SURVEY 89-224
ALASKA STATE LAND SURVEY 90-045

HM840092
HM870060
HM870061
HM890018
HM900014
HM900015

THIS MAP IS PREPARED
FOR KENAI PENINSULA
BOROUGH ASSESSING DEPT.
USE ONLY AND IS NOT
INTENDED FOR ANY
OTHER USE OR REPRESENTATION

DATE: SEPT. 30, 1993

FOR 1994 ASSESSMENT ROLL		
DELETE	ADD	REVISED
	TO	
4,9,		
12.13		

