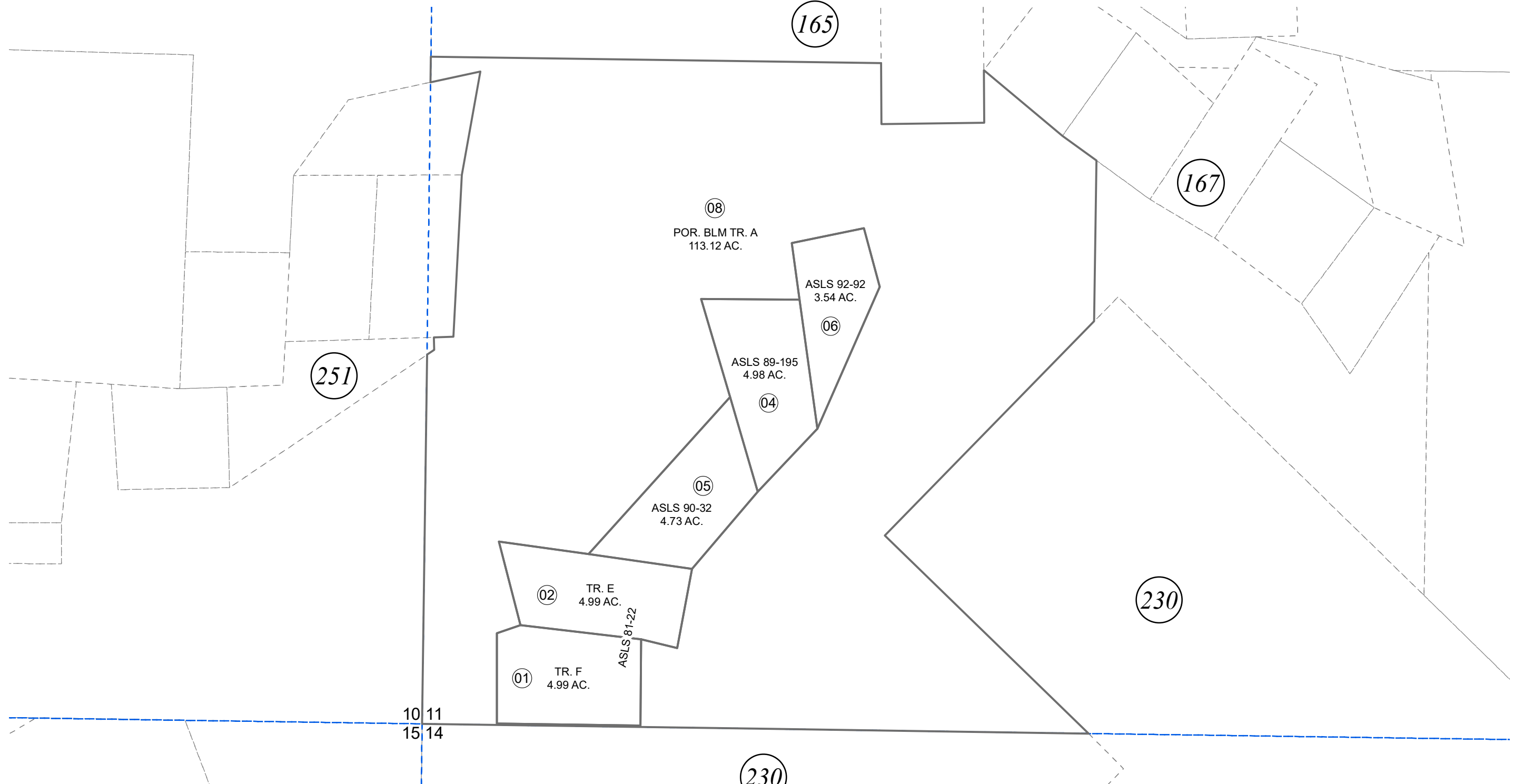


N1/2 NE1/4 SEC. 11, T05N, R09W, S.M.

185-168

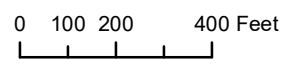
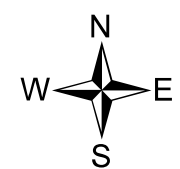


APRIL 21, 2022

For 2022 assessment roll		
Delete	Add	Revise
	To	06
ACREAGE CHANGE		

Assessor's Map  
Kenai Peninsula Borough

ALASKA STATE LAND SURVEY 81-22  
ALASKA STATE LAND SURVEY 89-195  
ALASKA STATE LAND SURVEY 90-32  
ALASKA STATE LAND SURVEY 92-92



This map is prepared for Kenai Peninsula Borough Assessing Dept. use only and is not intended for conveyance nor is it a survey.  
Note- Assessor's block Numbers Shown in Elipses  
Assessor's Parcel Numbers Shown in Circles