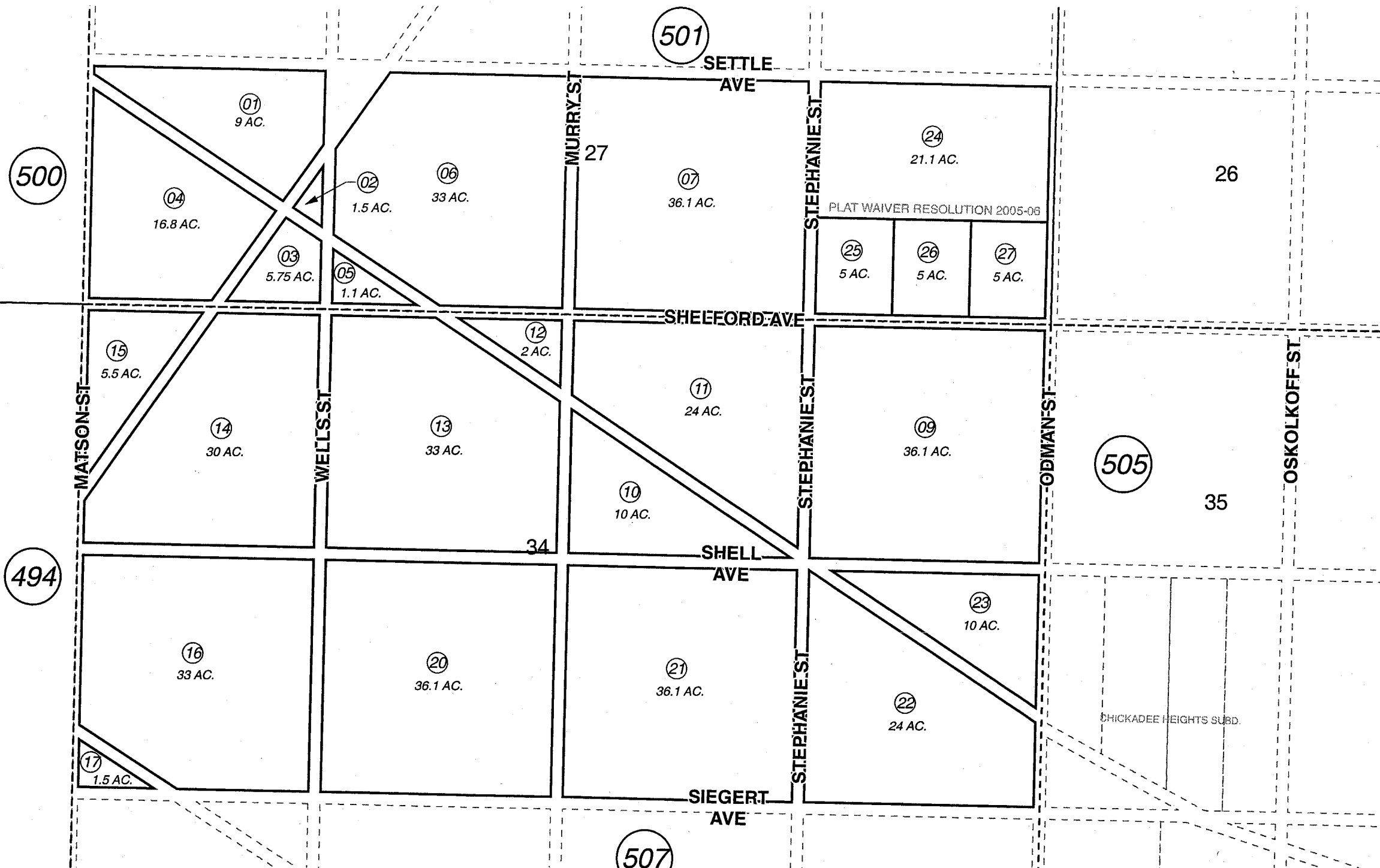


S1/2S1/2 SEC. 27 & N1/2 SEC. 34, T01S, R12W, S.M.

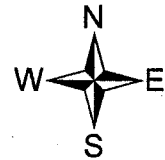
185-506



NOVEMBER 4, 2005

For 2006 assessment roll

Delete	Add	Revise
To		
8	24-27	



Assessor's Map  
Kenai Peninsula Borough

PLAT WAIVER RESOLUTION 2005-06 HM2005-000961-0

This map is prepared for Kenai Peninsula Borough Assessing Dept. use only and is not intended for conveyance nor is it a survey.  
Note- Assessor's block Numbers Shown in Ellipses  
Assessor's Parcel Numbers Shown in Circles