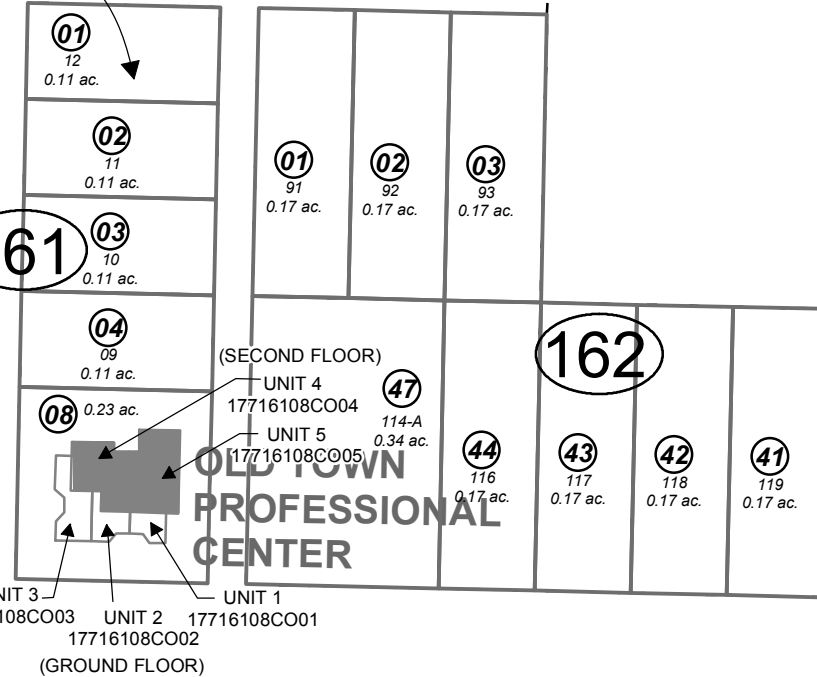


OWN
S ADDN.

155

NO. 6

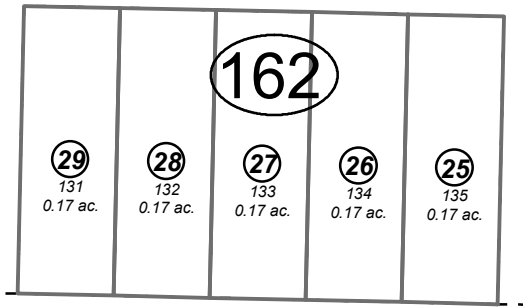
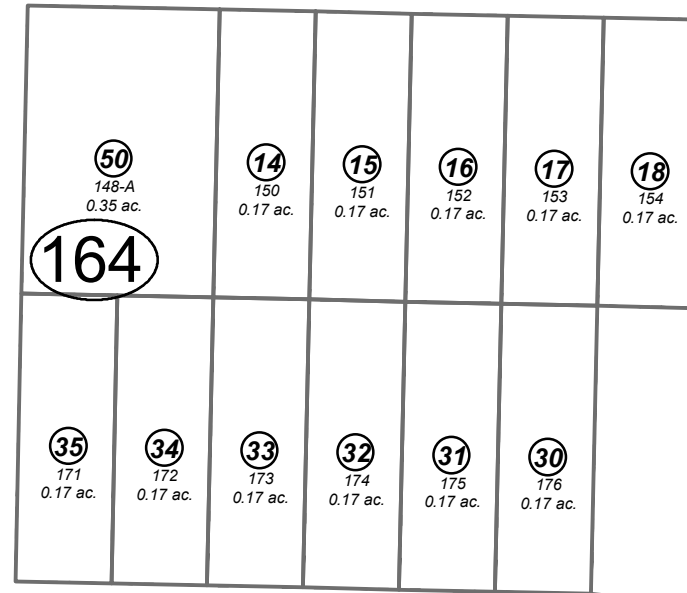
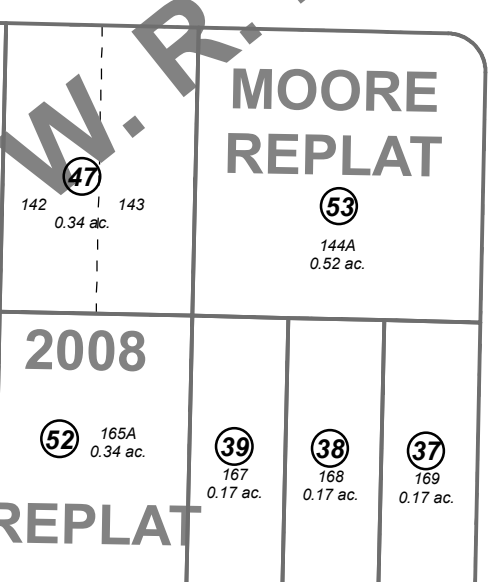
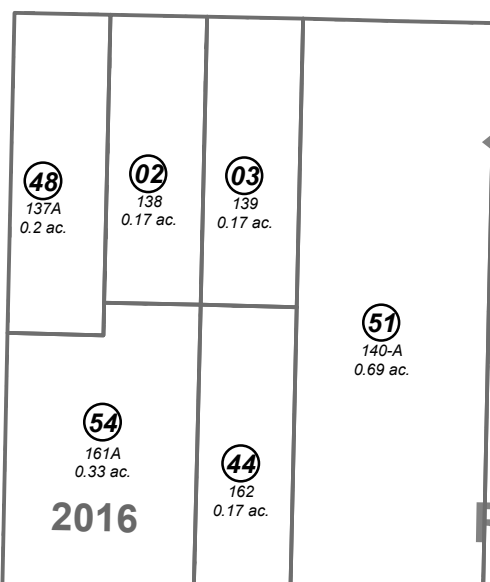
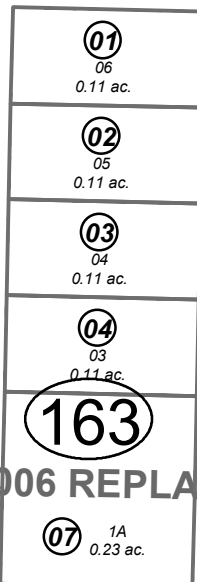
07
MBH



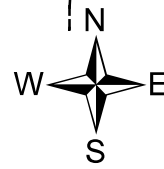
NO. 4

BK
175

UNIT 3 17716108CO03 UNIT 2 17716108CO02
UNIT 1 17716108CO01
(GROUND FLOOR)



140



0 50 100 Feet

JULY 1, 2016

For 2017 assessment roll		
Delete	Add	Revise
16445,		
16449	16454	

140

Assessor's Map
Kenai Peninsula Borough

- OLD TOWN PROFESSIONAL CENTER HM2002010
- W R BENSONS SUB HM0000877
- W R BENSON SUB AMENDED HM0670365
- W R BENSON SUB HM0890030
- W R BENSON SUB NO 4 HM0890030
- W R BENSON SUB AMENDED 2000 ADDN HM2000044
- W R BENSON SUB NO FIVE HM2001073
- W R BENSON SUB NO 6 HM2002018
- W R BENSON SUB SOUL SISTERS ADDN HM2002032
- WR BENSONS SUB LAUKITIS REPLAT HM2004077
- W R BENSON SUB 2006 REPLAT HM2006041
- W R BENSON SUB 2008 REPLAT HM2008066
- WR BENSONS SUB MOORE REPLAT HM2010061
- W R BENSONS SUB 2016 HM2016010

This map is prepared for Kenai Peninsula Borough Assessing Dept. use only and is not intended for conveyance nor is it a survey.

Note- Assessor's block Numbers Shown in Ellipses
Assessor's Parcel Numbers Shown in Circles