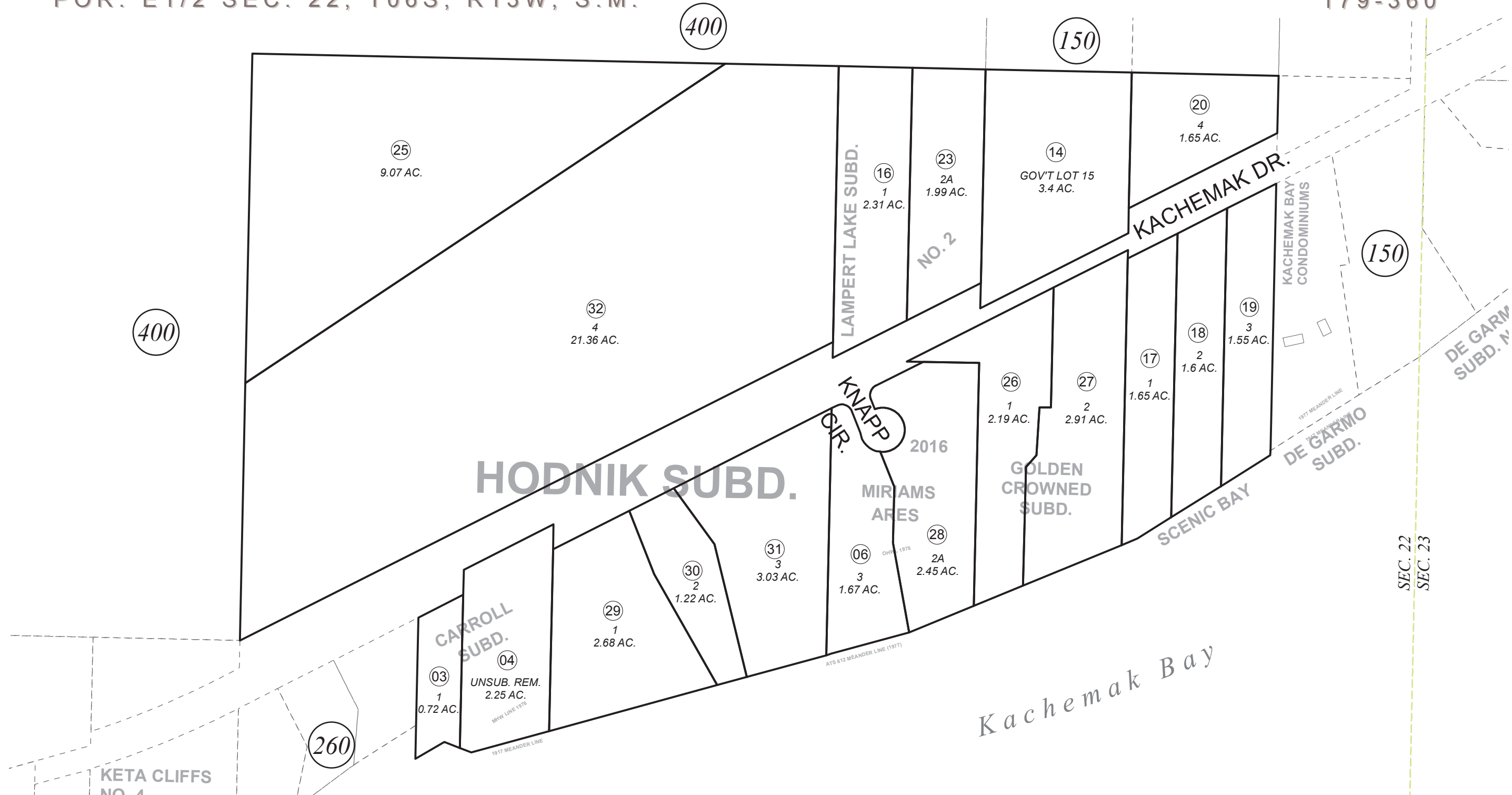


POR. E1/2 SEC. 22, T06S, R13W, S.M.

179-360



400

400

150

150

260

SEC. 22
SEC. 23



0 50 100 200 Feet

DECEMBER 14, 2017

For 2019 assessment roll		
Delete	Add	Revise
	To	
02,05, 24	29-32	

Assessor's Map
Kenai Peninsula Borough

- MIRIAMS ARES SUB HM0780108
- CARROLL SUB HM0790054
- SCENIC BAY SUB HM0830087
- LAMPERT LAKE SUB HM0850006
- LAMPERT LAKE SUB NO 2 HM0850130
- GOLDEN CROWNED SUB HM2011036
- MIRIAMS ARES 2016 SUB HM2016027
- HODNIK SUB HM2017050

This map is prepared for Kenai Peninsula Borough Assessing Dept. use only and is not intended for conveyance nor is it a survey.

Note- Assessor's block Numbers Shown in Ellipses
Assessor's Parcel Numbers Shown in Circles