

For 2011 assessment roll		
Delete	Add	Revise
(ACREAGE CHANGE)		
01.02		

JANUARY 20, 2011

Assessor's Map
Kenai Peninsula Borough
PLAT WAIVER RES 2006-30 HM2006-003518-0
PLAT WAIVER RES 2008-04 HM2008-000435-0

This map is prepared for Kenai Peninsula Borough Assessing Dept. use only and is not intended for conveyance nor is it a survey. Note- Assessor's block Numbers Shown in Ellipses Assessor's Parcel Numbers Shown in Circles

185-515

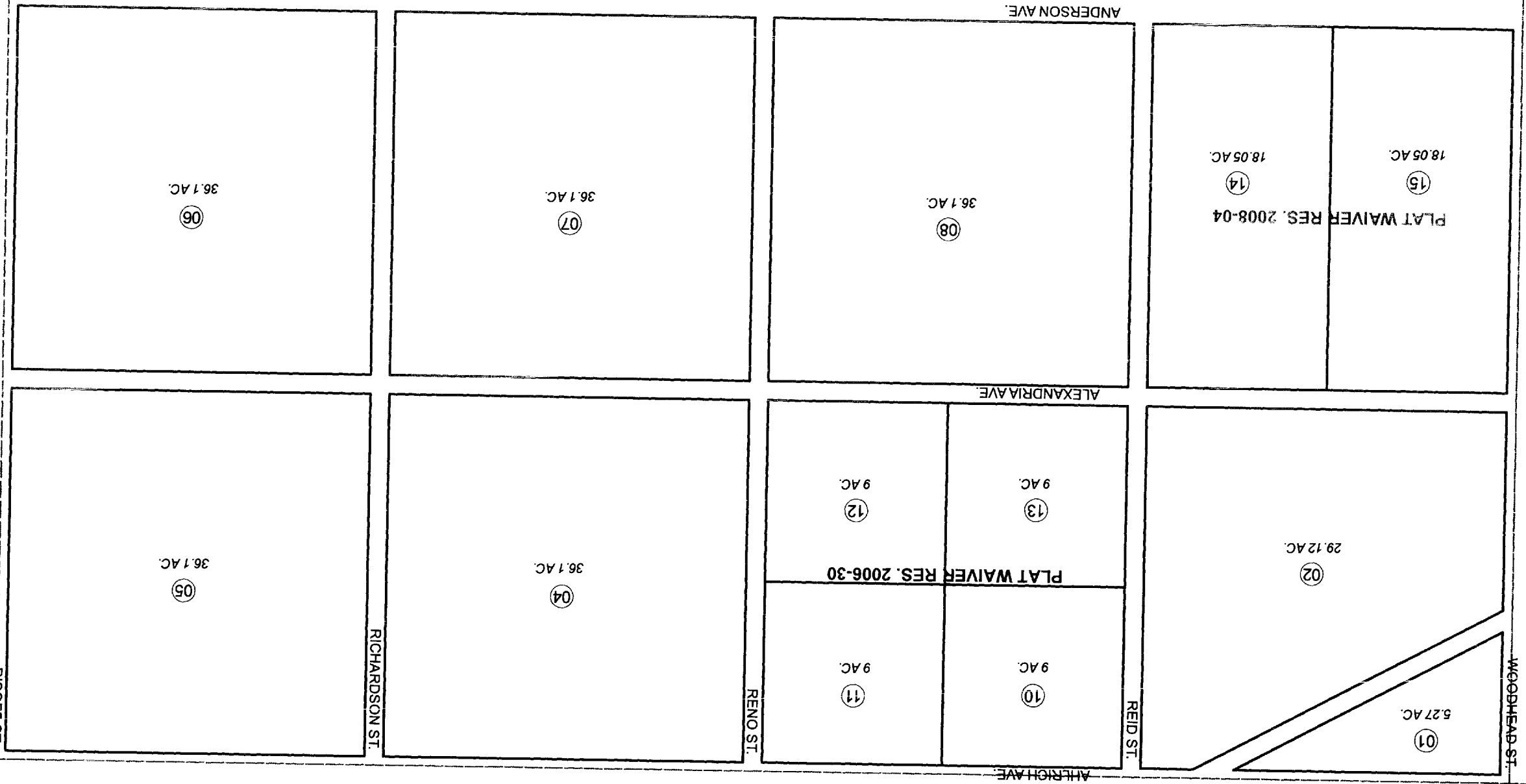
N 1/2 SEC. 12, T02S, R12W, S.M.

510

514

516

12



TATES

RISOFF ST.

RICHARDSON ST.

RENO ST.

REID ST.

WOODHEAD ST.

ALDRIDGE AVE.

ALEXANDRIA AVE.

ANDERSON AVE.