

S3/4 SEC. 20, T02S, R12W, S.M.

185-487

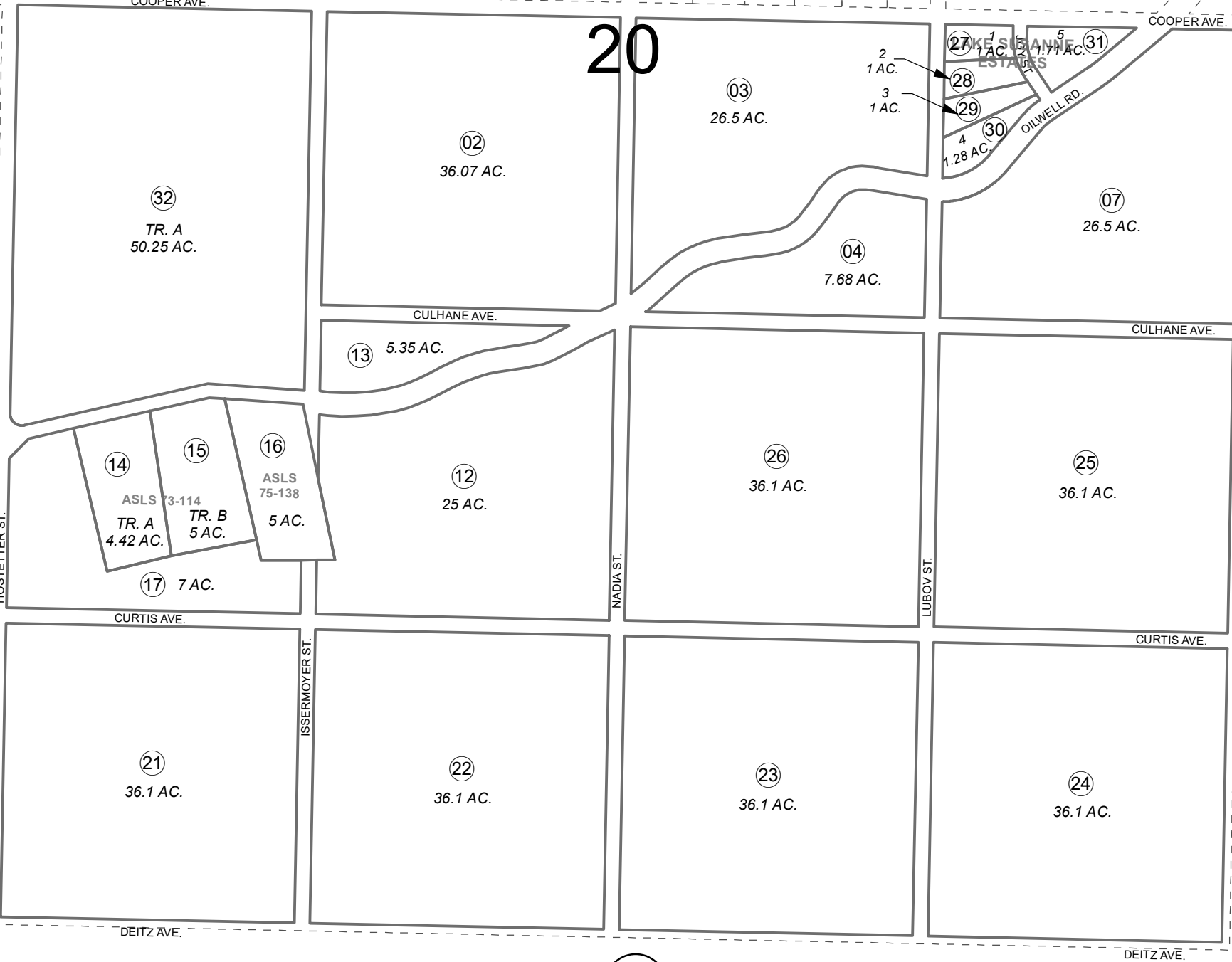
488

20

520

060

060



484

CULHANE AVE.

ASLS 78-41

485

ASLS 72-82

F SUBD.

32  
TR. A  
50.25 AC.

02  
36.07 AC.

03  
26.5 AC.

2  
1 AC.  
3  
1 AC.

27  
1 AC.  
28  
29  
4  
1.28 AC.

07  
26.5 AC.

13  
5.35 AC.

14  
ASLS 73-114  
TR. A  
4.42 AC.

15  
TR. B  
5 AC.

16  
ASLS 75-138  
5 AC.

12  
25 AC.

26  
36.1 AC.

25  
36.1 AC.

17  
7 AC.

CURTIS AVE.

21  
36.1 AC.

22  
36.1 AC.

23  
36.1 AC.

24  
36.1 AC.

OCTOBER 5, 2020

For 2021 assessment roll		
Delete	Add	Revise
01,18	32	



0 150 300 600 Feet

Assessor's Map  
Kenai Peninsula Borough

ASLS 75-138 HM0770030  
ASLS 73-114 HM0770088  
LAKE SUSANNE ESTATES HM0970007  
BAILEY MEADOW HM2020017

This map is prepared for Kenai Peninsula Borough Assessing Dept. use only and is not intended for conveyance nor is it a survey.  
Note- Assessor's block Numbers Shown in Ellipses  
Assessor's Parcel Numbers Shown in Circles