



For 2011 assessment roll		
Delete	Add	Revise

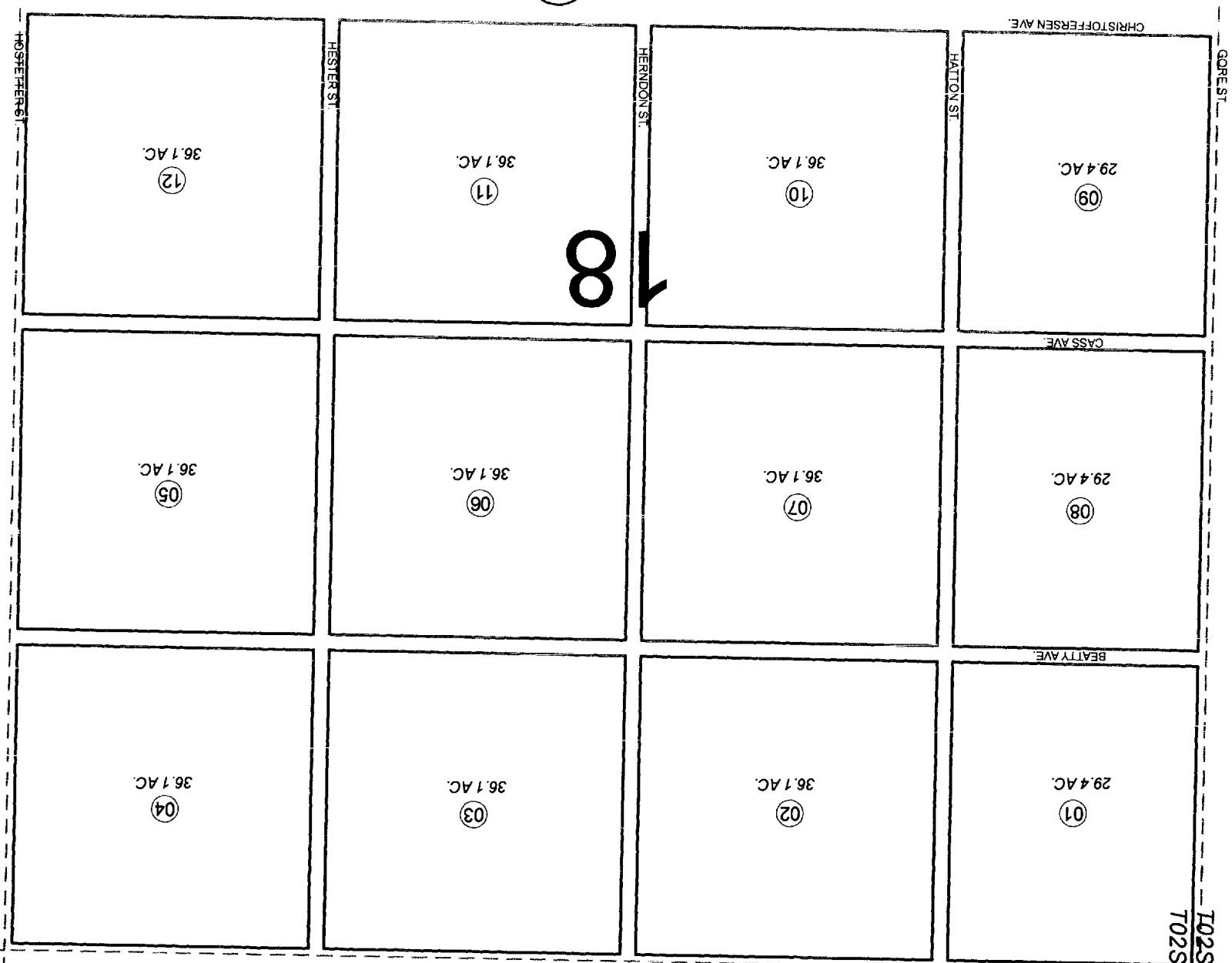
JANUARY 13, 2011

Assessor's Map  
Kenai Peninsula Borough

This map is prepared for Kenai Peninsula Borough Assessing Dept. use only and is not intended for conveyance nor is it a survey.  
Note- Assessor's block Numbers Shown in Ellipses and Parcel Numbers Shown in Circles

N3/4 SEC. 18, T02S, R12W, S.M.

185-483



494

505

484

489

488

ISSERMAYER ST.

BOLEY AVE.

BEATTY AVE.

CASS AVE.

ISSERMAYER ST.

CHRISTOFFERSEN AVE.

HOSLETTER ST.

HESLER ST.

HERNDON ST.

HALTON ST.

GORE ST.

CHRISTOFFERSEN AVE.

CASS AVE.

BEATTY AVE.

T02S, R12W  
T02S, R12W

01  
29.4 AC.

02  
36.1 AC.

03  
36.1 AC.

04  
36.1 AC.

08  
29.4 AC.

07  
36.1 AC.

06  
36.1 AC.

05  
36.1 AC.

09  
29.4 AC.

10  
36.1 AC.

11  
36.1 AC.

12  
36.1 AC.

18