

For 2011 assessment roll		
Delete	Add	Revise
04-11,	13-16,	18,19
(ACREAGE CHANGE)		

JANUARY 18, 2011

Assessor's Map
Kenai Peninsula Borough

EDWARDS DESCENDANTS ESTATES HM200007

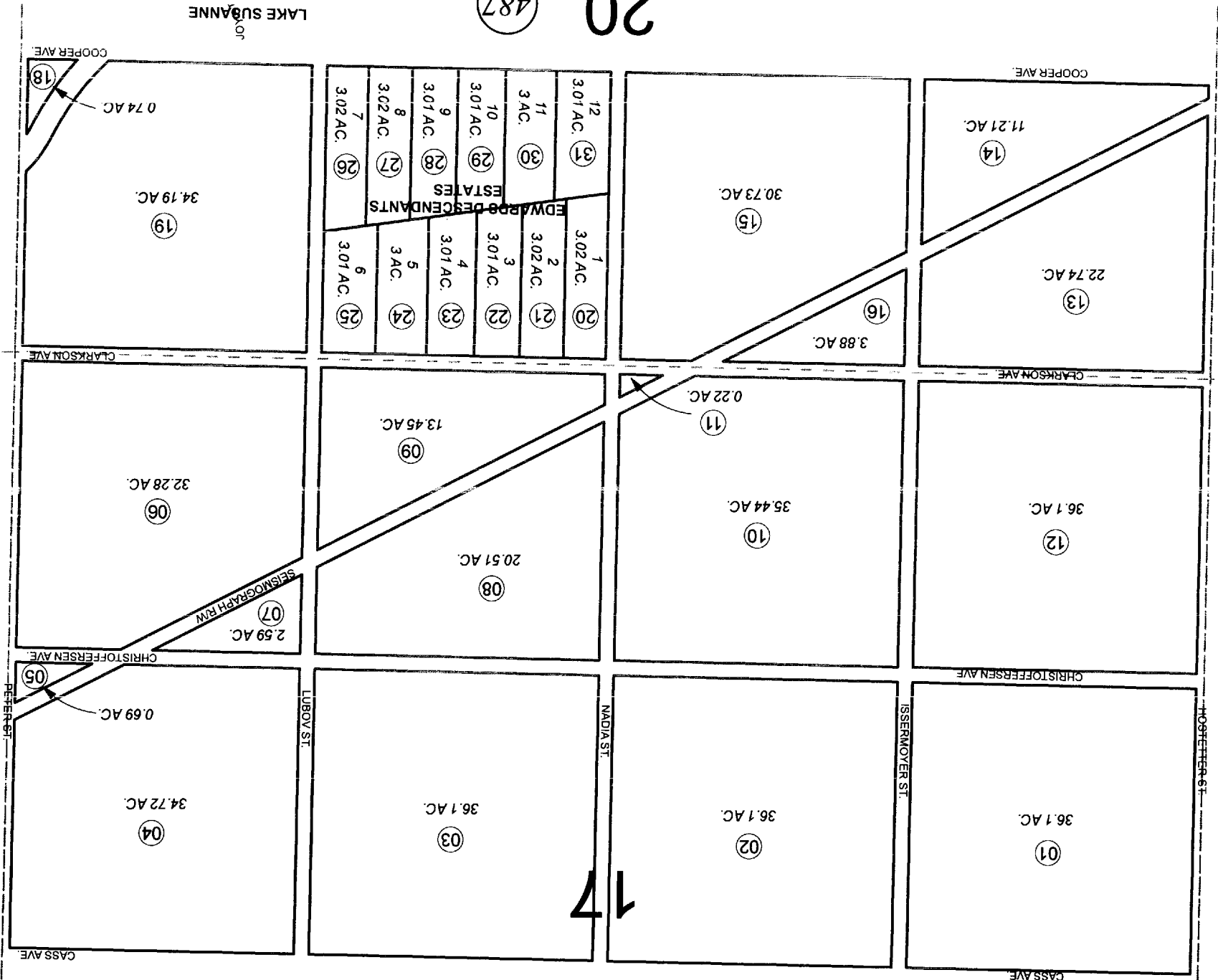
This map is prepared for Kenai Peninsula Borough Assessing Dept. use only and is not intended for conveyance nor is it a survey. Note- Assessor's block Numbers Shown in Ellipses

20

487

489

17



520

499

484

483

185-488

S1/2 SEC. 17 & N1/4 SEC. 20, T02S, R12W, S.M.