

POR. SEC. 30, T05N, R03W, S.M.

119-075

60.54 ac.
04

074

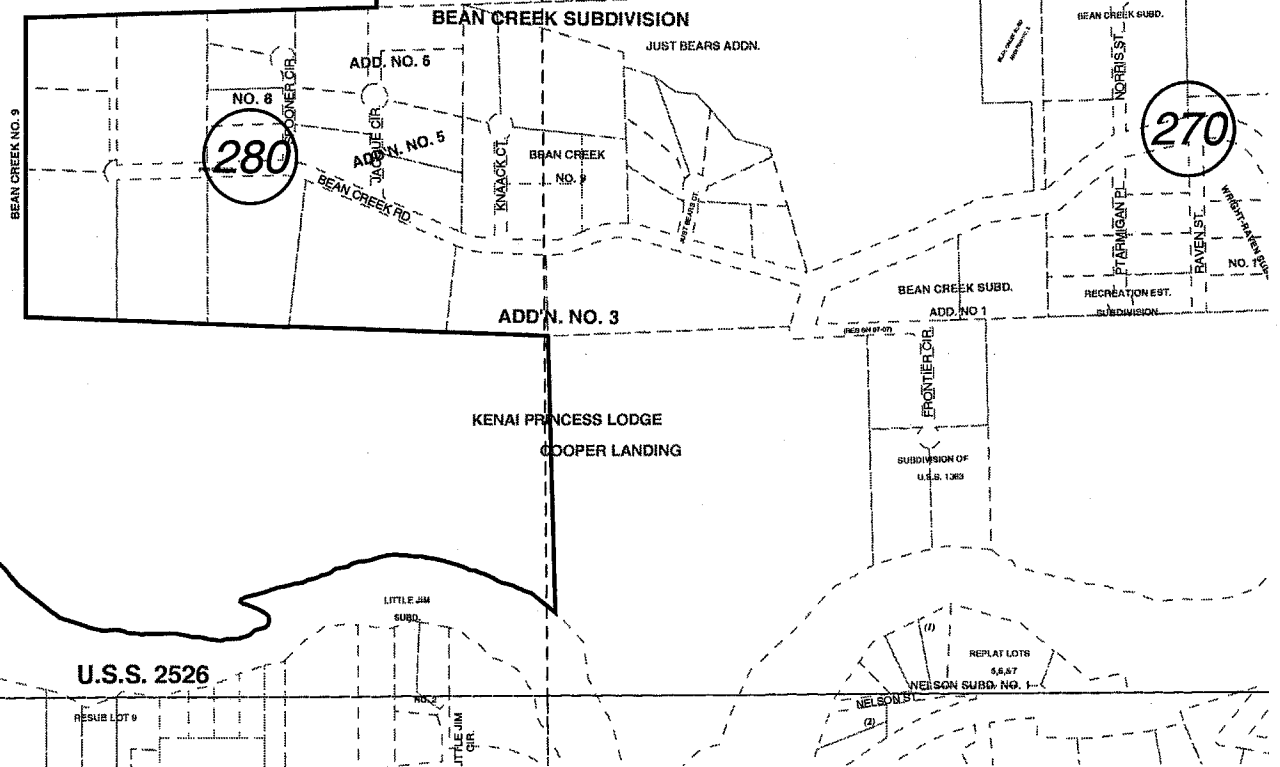
197.02 ac. +/-
01

071

247.71 ac.
03

010

AI

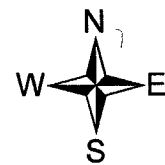


TAYLOR-WRIGHT SUBD
REPLAT OF LOTS 11A&11B

U.S.S. 5106
11
11B
11C
11D
040

U.S.S. 2526

REPLAT LOTS 1&2
11A&11B
NELSON SUBD. NO. 1



SEPT. 10, 2004

For 2005 assessment roll

Delete	Add	Revise
	To	
2	3,4	

Assessor's Map
Kenai Peninsula Borough

US SURVEY 5105 SW0005105

Note- Assessor's block Numbers Shown in Ellipses
Assessor's Parcel Numbers Shown in Circles

This map is prepared
for Kenai Peninsula
Borough Assessing Dept.
use only and is not
intended for conveyance
nor is it a survey.