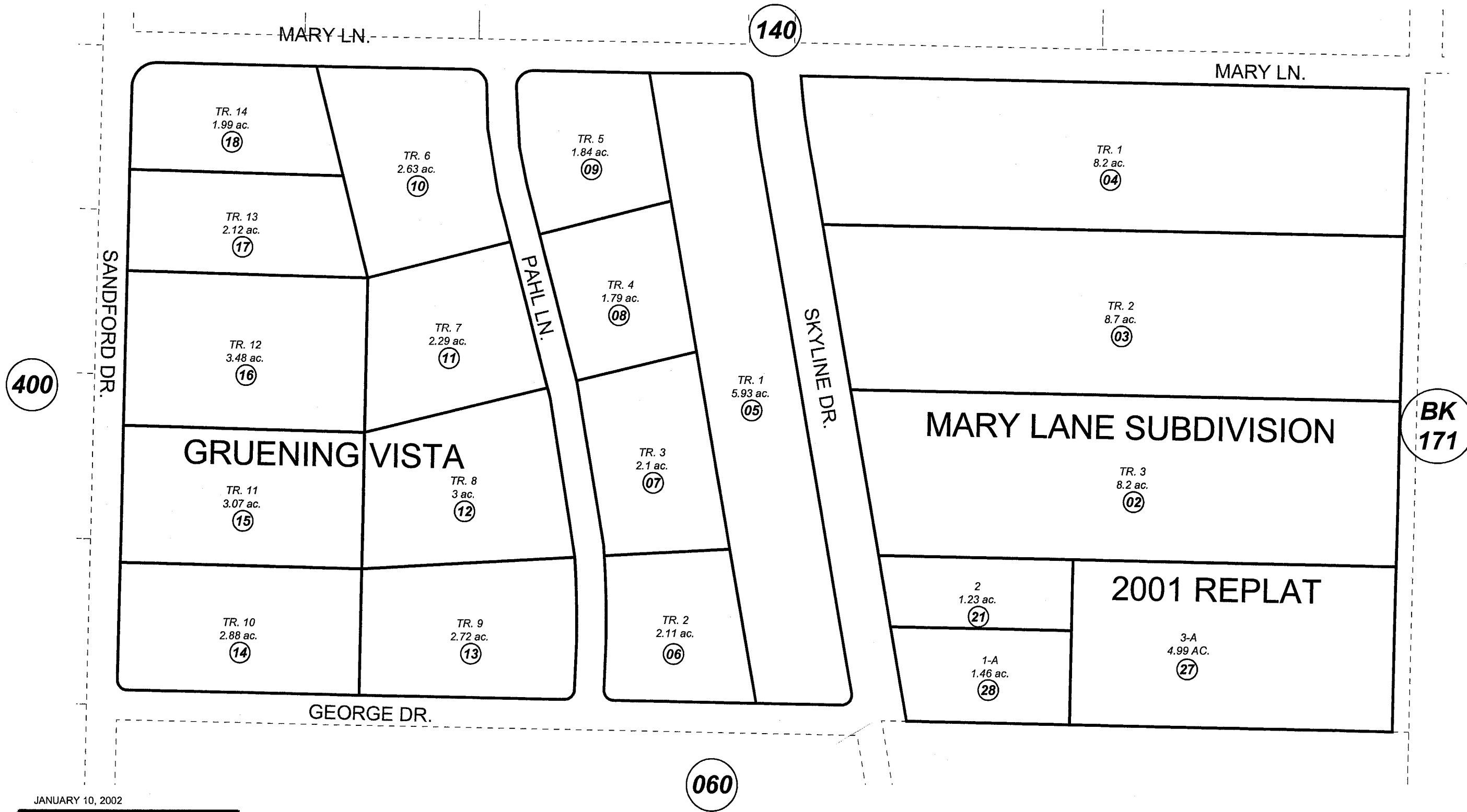


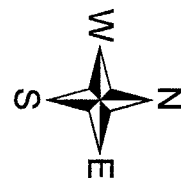
W 1/2 NW 1/4 SEC. 2, T06S, R13W, S.M.

174-150



JANUARY 10, 2002

For 2002 assessment roll		
Delete	Add	Revise
	To	
	22-26	27,28



Assessor's Map
Kenai Peninsula Borough

GRUENING VISTA SUB □ HM0740818
 MARY LANE SUB □ HM0741197
 MARY LANE RESUB TRACT 4 □ HM0780078
 MARY LANE SUB 2001 REPLAT □ HM2001070

Note- Assessor's block Numbers Shown in Elipses
 Assessor's Parcel Numbers Shown in Circles

This map is prepared
 for Kenai Peninsula
 Borough Assessing Dept.
 use only and is not
 intended for conveyance
 nor is it a survey.