

174-140

E1/2 SEC. 3, T06S, R13W, S.M.

280

WILSON'S SUBDIVISION  
ADDITION NO. 2

062

071

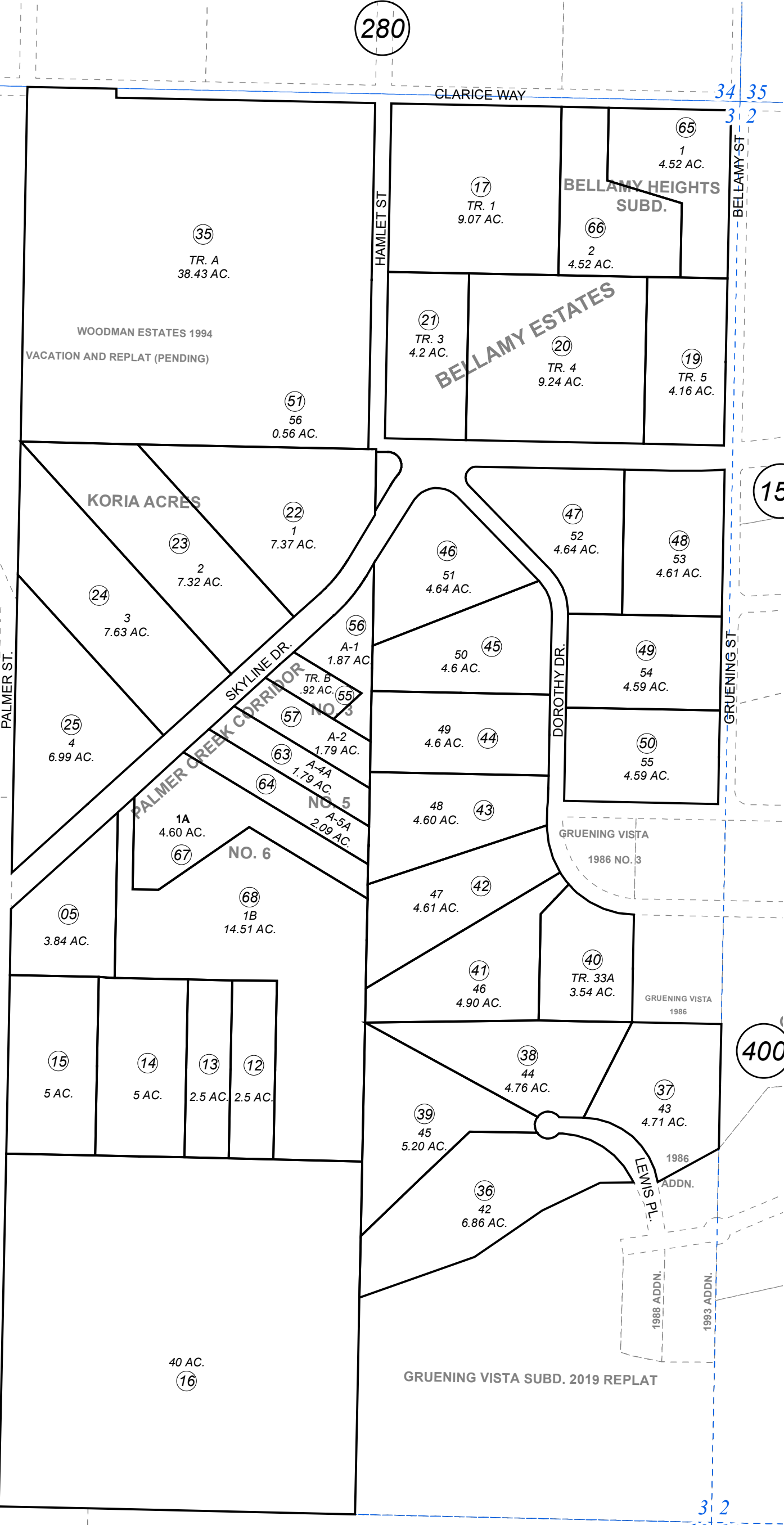
060

34 35

150

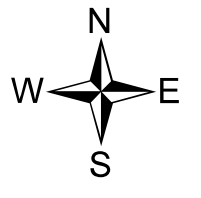
400

3 2  
10 11



- BELLAMY ESTATES SUB HM0760091
- KORIA ACRES SUB HM0780119
- WOODMAN ESTATES 1994 VACATION HM0950045
- GRUENING VISTA 1998 ADDN AMENDED HM0990012
- PALMER CREEK CORRIDOR CORRECTIVE REPLAT HM2003068
- GRUENING VISTA 1998 ADDN AMENDED HM0990012
- PALMER CREEK CORRIDOR NO 3 HM2004065
- PALMER CREEK CORRIDOR NO 4 HM2007121
- PALMER CREEK CORRIDOR NO 5 HM2014046
- BELLAMY ESTATES SUB REPLAT TRACT 2 HM2017034
- PALMER CREEK CORRIDOR NO 6 HM2018052
- RECORD OF SURVEY HM2020042

Assessor's Map  
Kenai Peninsula Borough



0 200 400 Feet

NOVEMBER 20, 2020	
For 2021 assessment roll	
Delete	Revise
Add	
To	05
(ACREAGE CHANGE)	

This map is prepared for Kenai Peninsula Borough Assessing Dept. use only and is not intended for conveyance nor is it a survey.

Note- Assessor's block Numbers Shown in Ellipses  
Assessor's Parcel Numbers Shown in Circles