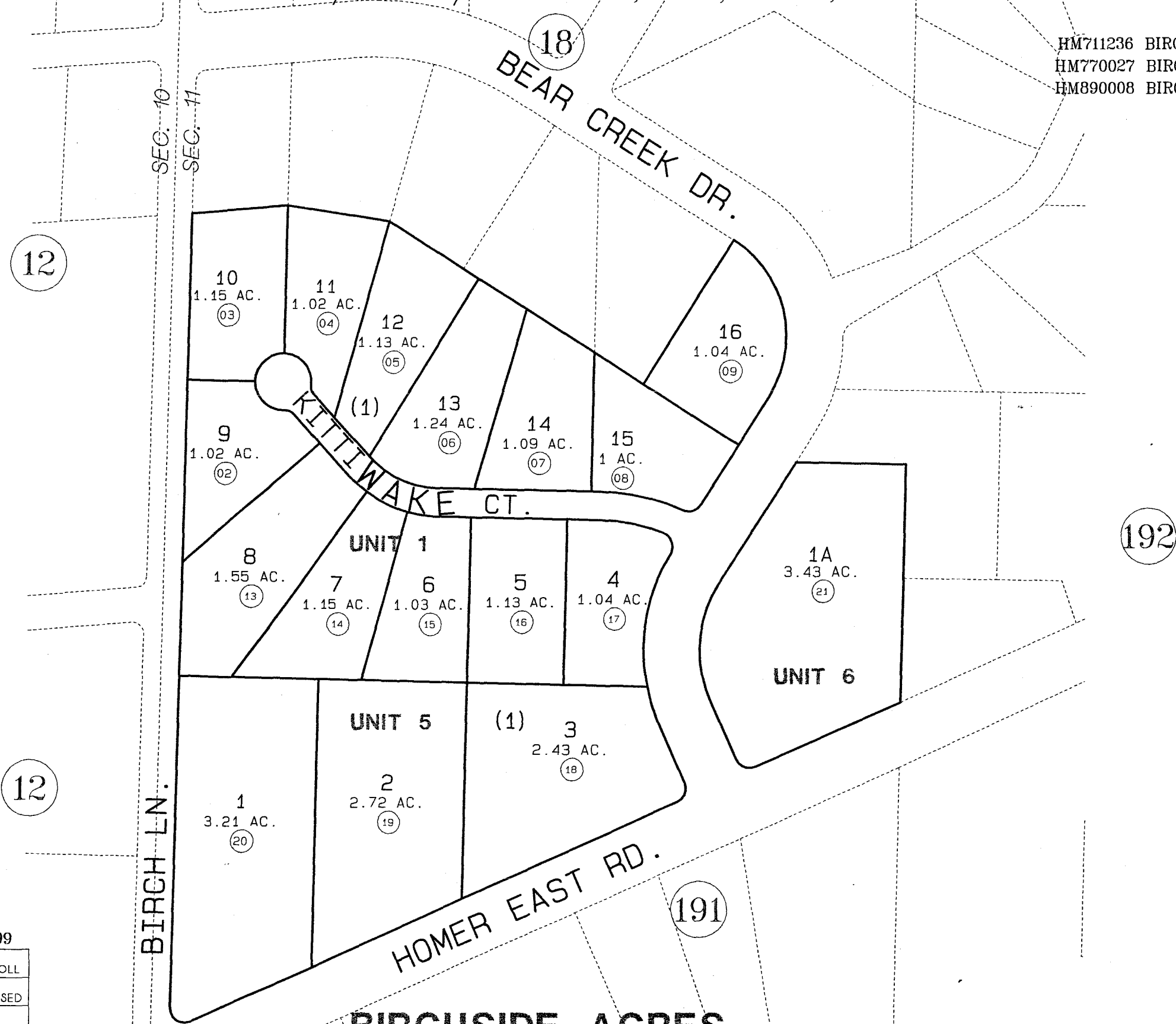


POR. W1/2 SW1/4 SEC. 11, T6S, R13W, S.M.

174-190

HM711236 BIRCHSIDE ACRES SUB UNIT 1
HM770027 BIRCHSIDE ACRES SUB UNIT 5
HM890008 BIRCHSIDE ACRES SUB UNIT 6



12

12

18

192

191



DATE: OCT. 26, 1999

FOR 2000 ASSESSMENT ROLL

DELETE ADD REVISED

TO

10 174192+

Assessor's Map
Kenai Peninsula Borough

BIRCHSIDE ACRES

THIS MAP IS PREPARED
FOR KENAI PENINSULA
BOROUGH ASSESSING DEPT.
USE ONLY AND IS NOT
INTENDED FOR CONVEYANCE.
NOR IS IT A SURVEY

NOTE - Assessor's Block Numbers Shown In Ellipses
Assessor's Parcel Numbers Shown In Circles