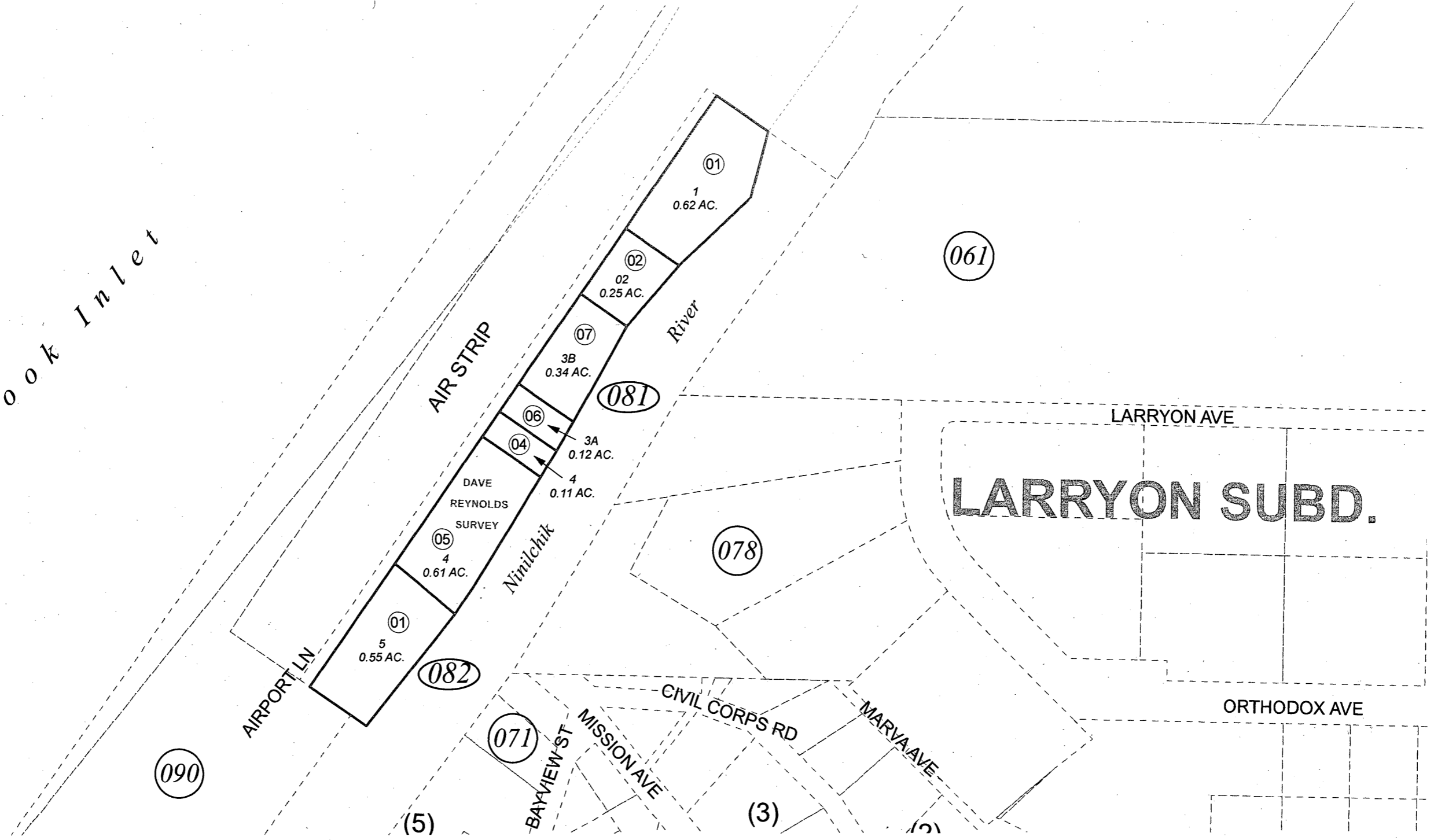


Cook Inlet



MAY 18, 2012

For 2013 assessment roll		
Delete	Add	Revise
To		081-04
(ACREAGE CHANGE)		

Assessor's Map
Kenai Peninsula Borough

US SURVEY 3036 HM0003036
ALASKA STATE LAND SURVEY 74-56 HM0750015

This map is prepared for Kenai Peninsula Borough Assessing Dept. use only and is not intended for conveyance nor is it a survey.

Note- Assessor's block Numbers Shown in Ellipses
Assessor's Parcel Numbers Shown in Circles