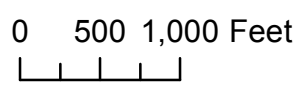
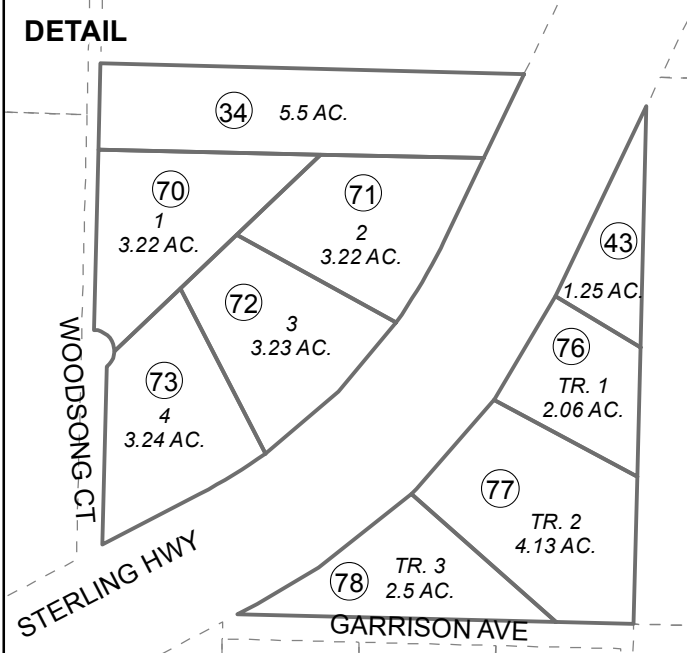
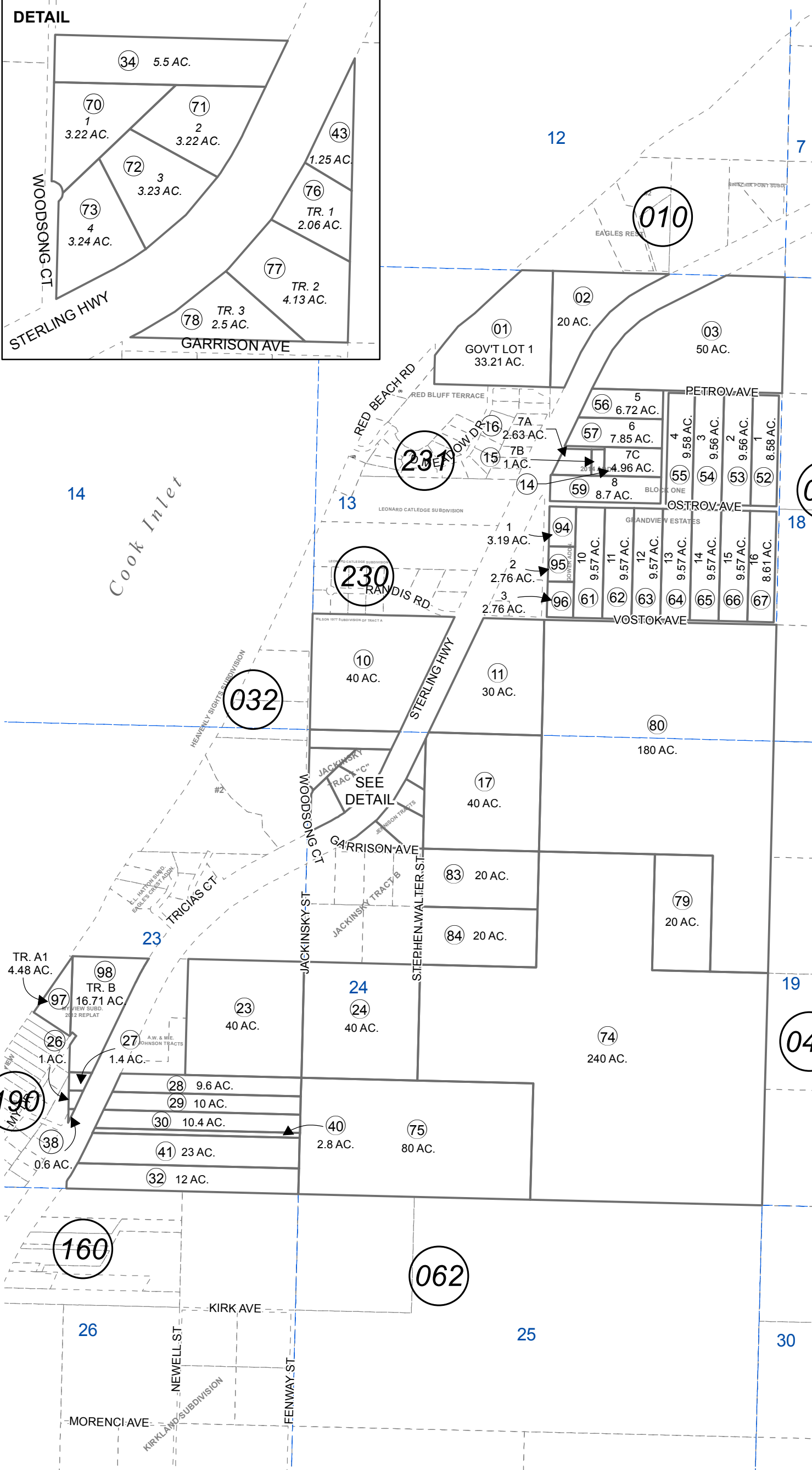


SEC. 13, 14, 23 & 24, T01S, R14W, S.M.

157-030



DECEMBER 30, 2014

For 2015 assessment roll	
Delete	Add
	To
58	14-16

GRANDVIEW ESTATES SUB HM0750031
 JACKINSKY SUB TRACT C HM0780059
 JENNISON TRACTS SUB HM0800064
 GRANDVIEW ESTATES GOWER ADDN HM0980045
 MY VIEW SUB 2012 REPLAT HM2012047
 GRANDVIEW ESTATES 2014 ADDN HM2014039

Assessor's Map
 Kenai Peninsula Borough

This map is prepared
 for Kenai Peninsula
 Borough Assessing Dept.
 use only and is not
 intended for conveyance
 nor is it a survey.

Note- Assessor's block Numbers Shown in Ellipses
 Assessor's Parcel Numbers Shown in Circles