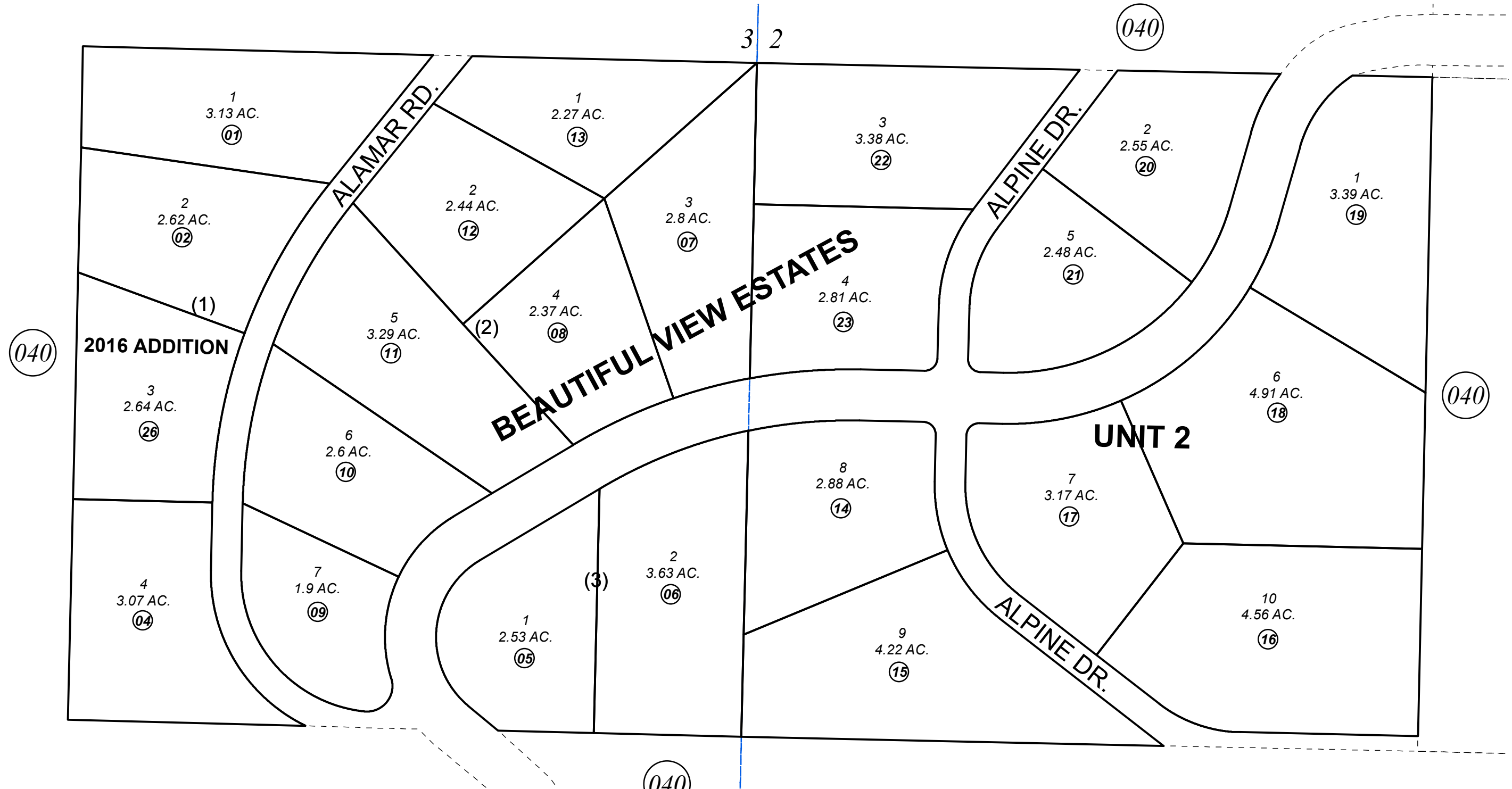


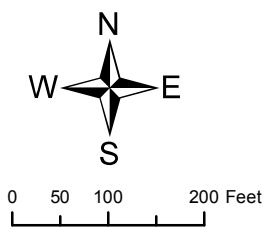
NE1/4 SE1/4 SEC. 3 & NW1/4 SW1/4 SEC. 2, T05S, R14W, S.M.

171-380



AUGUST 12, 2016

For 2017 assessment roll		
Delete	Add	Revise
To		
24,25	26	



Assessor's Map
Kenai Peninsula Borough

BEAUTIFUL VIEW ESTATES HM0760080
BEAUTIFUL VIEW ESTATES UNIT TWO HM0780048
BEAUTIFUL VIEW ESTATES 2016 ADDITION HM2016012

This map is prepared for Kenai Peninsula Borough Assessing Dept. use only and is not intended for conveyance nor is it a survey.
Note- Assessor's block Numbers Shown in Elipses
Assessor's Parcel Numbers Shown in Circles