

POR. S1/2 SEC. 35, T05S, R13W, S.M.

171-390

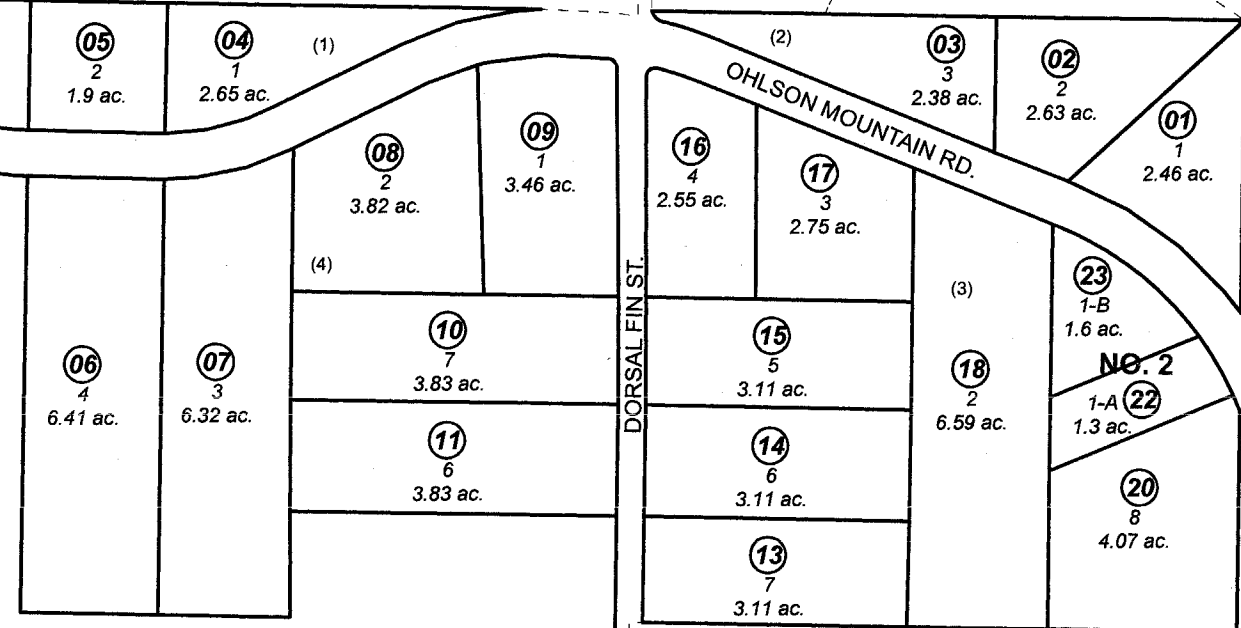
133

130

450

CAPRICORN

130



OHLSON MOUNTAIN SUBDIVISION

280

SEC. 34
SEC. 35

BELLAMY ST

130

BARY
TRA

SKYLINE DR.

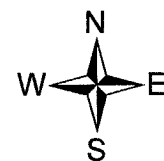
SEC. 35
SEC. 36

TAYLOR AVE

BK
174

OCTOBER 17, 2007

For 2008 assessment roll		
Delete	Add	Revise
	To	
19	22,23	



Assessor's Map
Kenai Peninsula Borough

OHLSON MOUNTAIN SUB HM7700018
MARTIN'S RETREAT HM2001050
OHLSON MOUNTAIN SUB NO 2 HM2007087

This map is prepared for Kenai Peninsula Borough Assessing Dept. use only and is not intended for conveyance nor is it a survey.

Note- Assessor's block Numbers Shown in Ellipses
Assessor's Parcel Numbers Shown in Circles