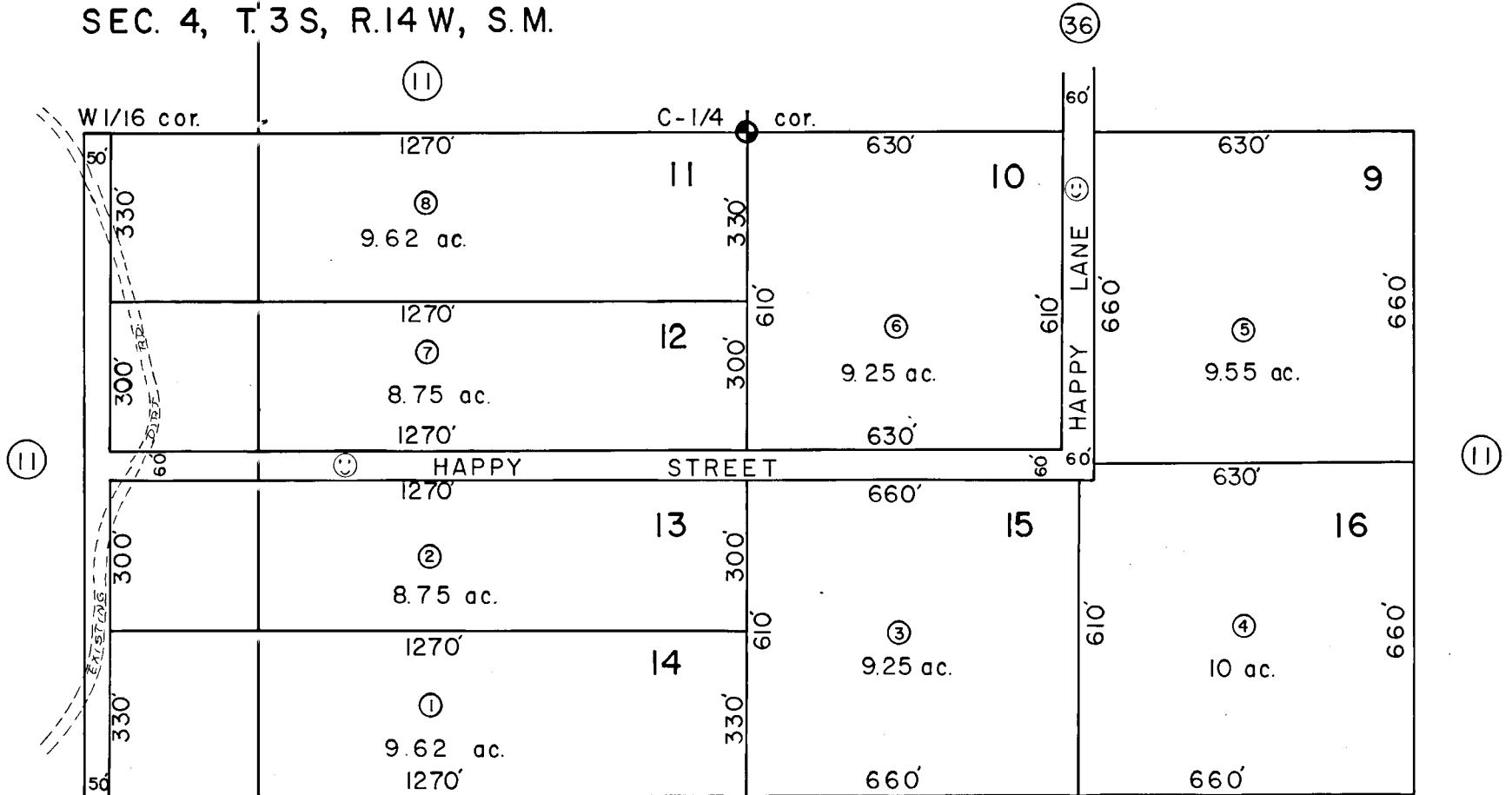


NE 1/4 SW 1/4 & NW 1/4 SE 1/4  
SEC. 4, T. 3 S, R. 14 W, S. M.

159-37



HOFFMAN ACRES SUB.  
74 - 2195

Kenai Peninsula Borough, Alaska

NOTE - Assessor's Block Numbers Shown in Ellipses  
Assessor's Parcel Numbers Shown in Circles