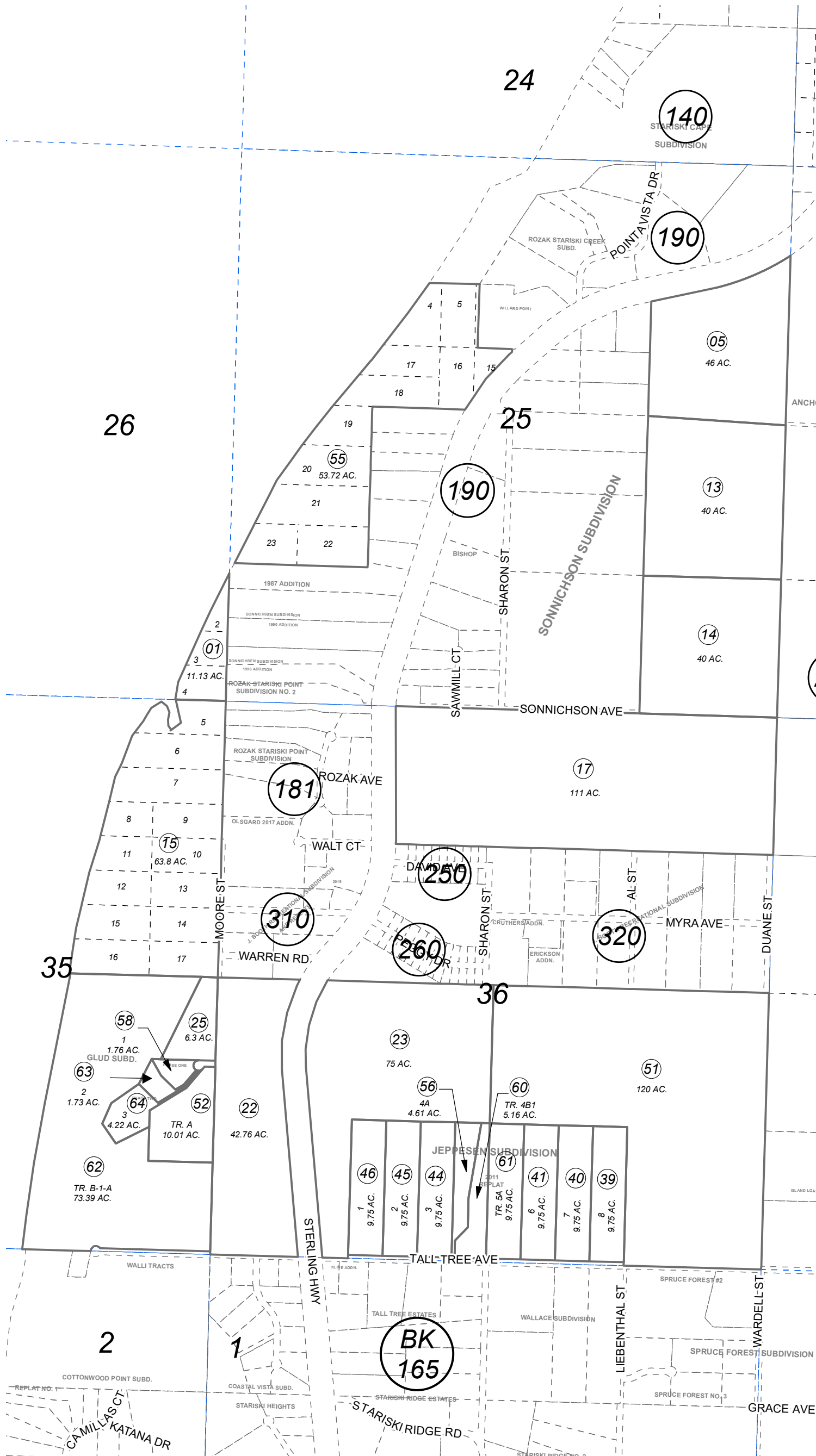


159-180

SEC. 25, 26, 35, 36, T03S, R15W, S.M.



NOVEMBER 19, 2021

For 2022 assessment roll	
Delete	Revise
Add	
To	54 159-190+



1" = 1,000 feet

JEPPESEN SUB HM0750028
 GLUD SUB HM0980073
 JEPPESEN SUB KLINE ADDN HM2005027
 GLUD NO 2 PHASE ONE HM2011045
 JEPPESEN SUB 2011 REPLAT HM2012010
 GLUD NO 2 PHASE TWO HM2012051

Assessor's Map
 Kenai Peninsula Borough

Note- Assessor's block Numbers Shown in Ellipses
 Assessor's Parcel Numbers Shown in Circles

This map is prepared
 for Kenai Peninsula
 Borough Assessing Dept.
 use only and is not
 intended for conveyance
 nor is it a survey.