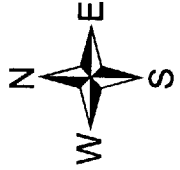
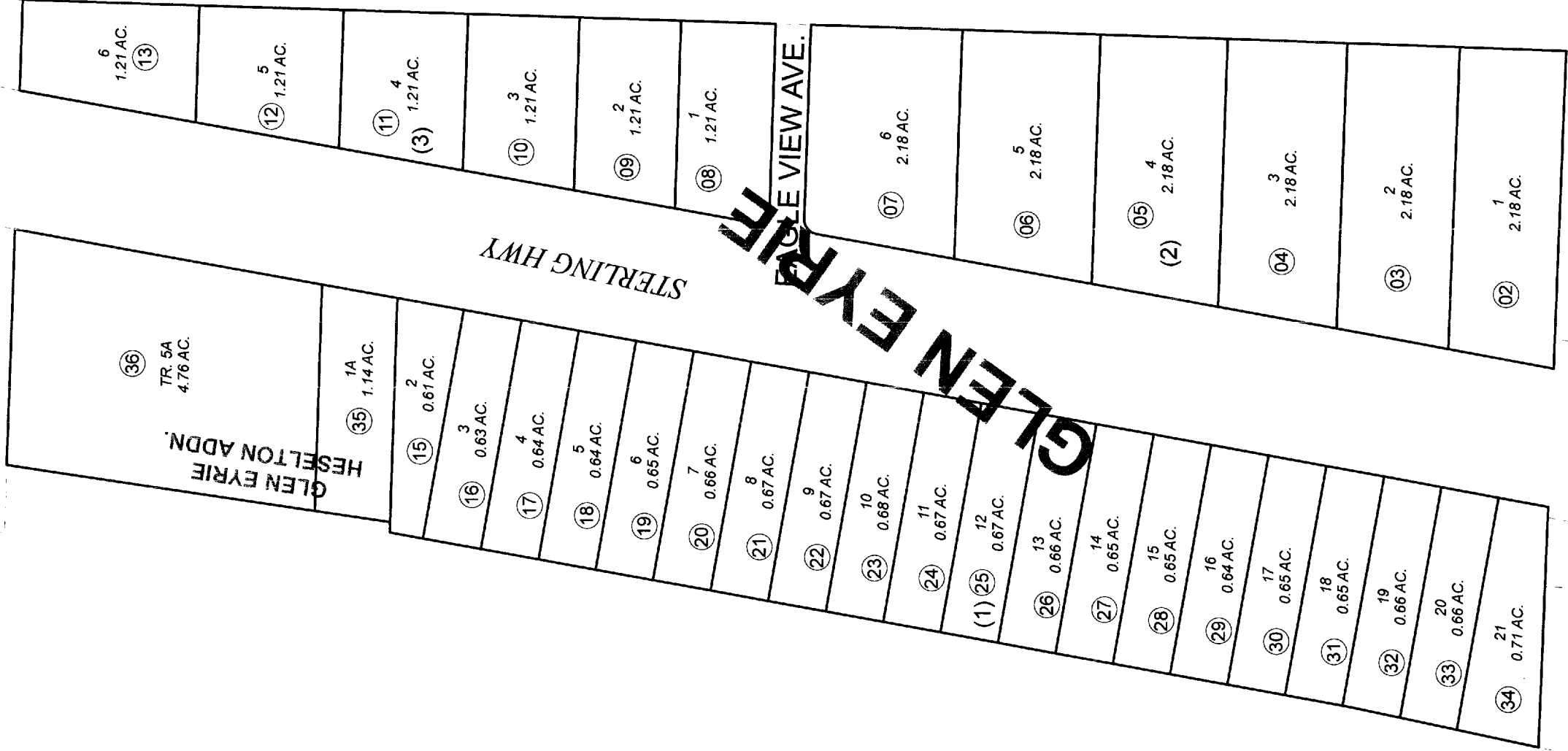


SEC. 17  
SEC. 20

060

060

471



For 2011 assessment roll	
Delete	Add
Revise	
To	01,14 35,36

JUNE 30, 2010

Assessor's Map  
Kenai Peninsula Borough

GLEN EYRIE SUB HM0770051  
JANS SOUTHLAND ESTATES  
DEED OF RECORD BOUNDARY SURVEY HM0850052  
GLEN EYRIE HESELTON ADDN HM2010026

This map is prepared for Kenai Peninsula Borough Assessing Dept. use only and is not intended for conveyance nor is it a survey.  
Note- Assessor's block Numbers Shown in Ellipses  
Assessor's Parcel Numbers Shown in Circles