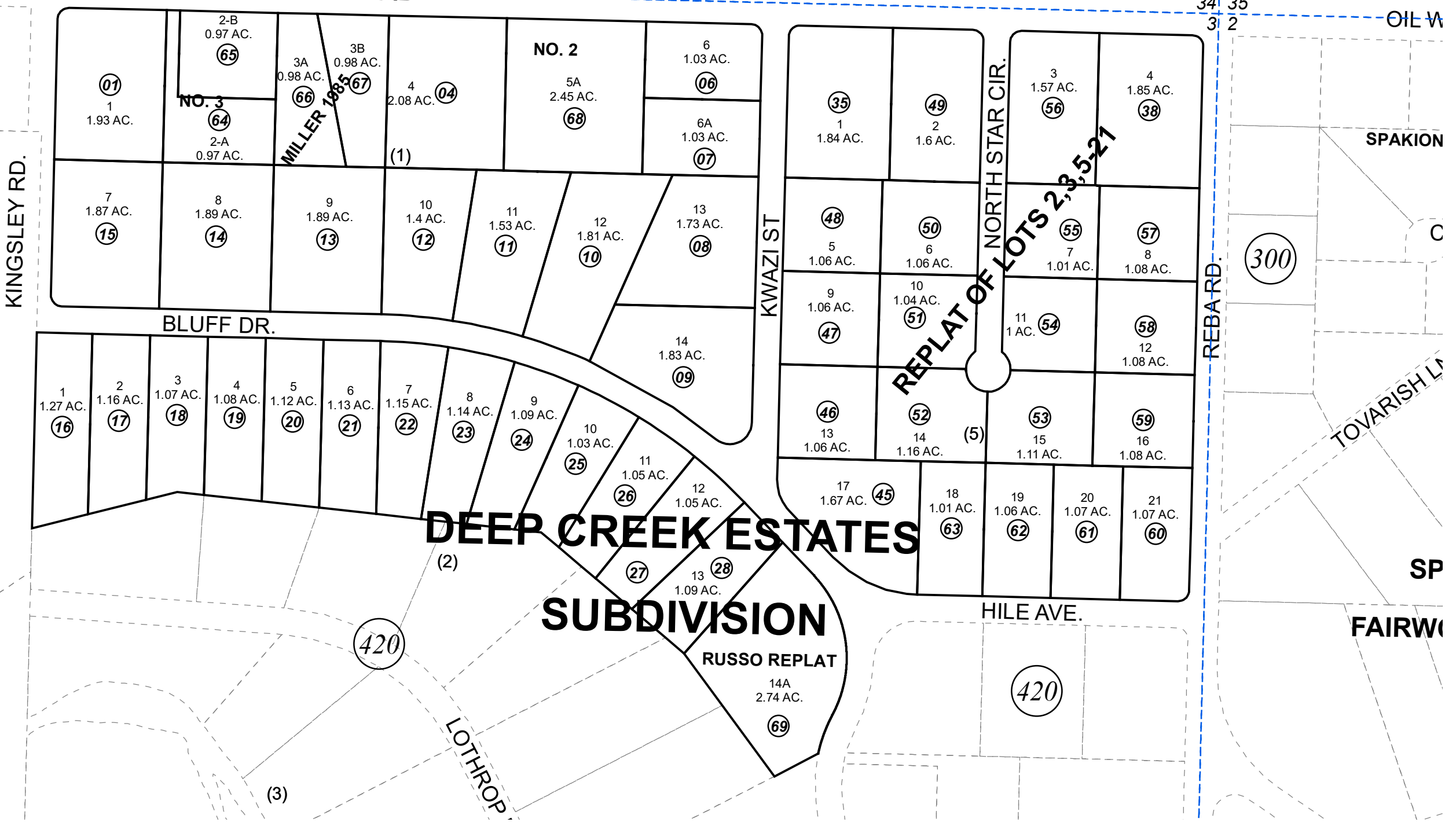
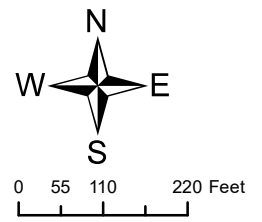


OILWELL RD



DECEMBER 4, 2019

For 2020 assessment roll		
Delete	Add	Revise
	To	
29,30	69	



Assessor's Map  
Kenai Peninsula Borough

- HM0760084 DEEP CREEK ESTATES SUB
- HM0780034 DEEP CREEK ESTATES RESUB LOTS 2 3 5-21 BLK 5
- HM0840038 DEEP CREEK ESTATES SUB NO 3
- HM0850094 DEEP CREEK ESTATES MILLER 1985 SUB
- HM0930010 DEEP CREEK ESTATES SUB NO 2
- HM2019035 DEEP CREEK ESTATES RUSSO REPLAT

This map is prepared for Kenai Peninsula Borough Assessing Dept. use only and is not intended for conveyance nor is it a survey.  
Note- Assessor's block Numbers Shown in Ellipses  
Assessor's Parcel Numbers Shown in Circles