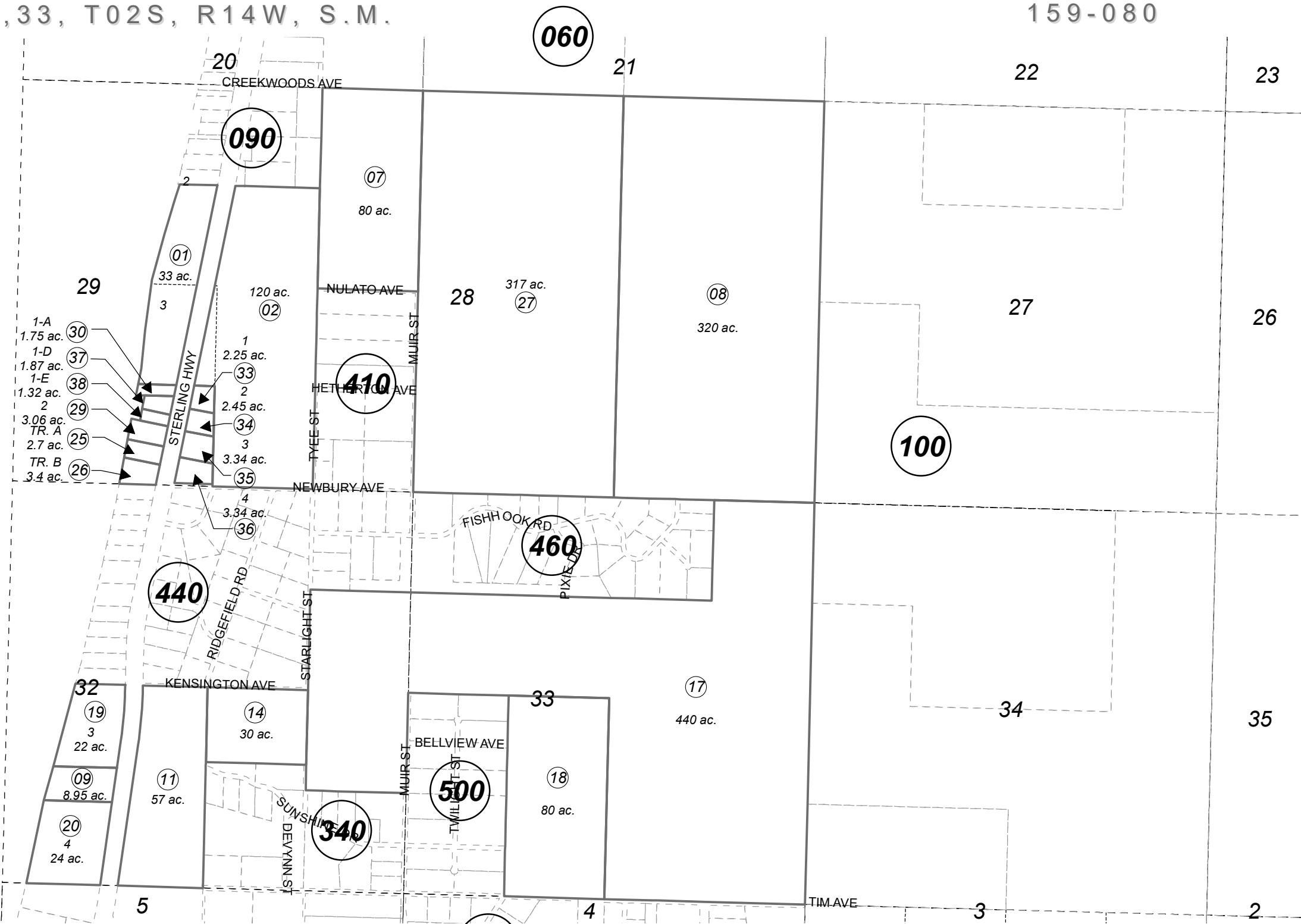


SEC. 28,29,32,33, T02S, R14W, S.M.

159-080

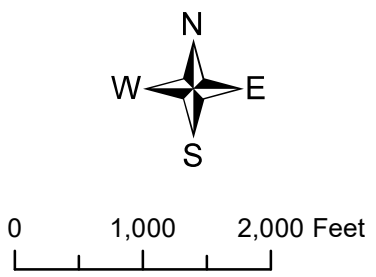
COOK  
INLET



- 1-A 1.75 ac. (30)
- 1-D 1.87 ac. (37)
- 1-E 1.32 ac. (38)
- 2 3.06 ac. (29)
- TR. A 2.7 ac. (25)
- TR. B 3.4 ac. (26)

JUNE 14, 2021

For 2022 assessment roll		
Delete	Add	Revise
To		
31,32	37,38	



Assessor's Map  
Kenai Peninsula Borough

EMMA MCCUNE TRACTS SUB HM0780073  
 MISTY ACRES SUB HM0820080  
 MISTY ACRES SUB COYS ADDN HM0940033  
 WHISPERING PINES HM2003046  
 RECORD OF SURVEY HM2020009  
 MISTY ACRES 2020 REPLAT HM2021012

This map is prepared for Kenai Peninsula Borough Assessing Dept. use only and is not intended for conveyance nor is it a survey.  
 Note- Assessor's block Numbers Shown in Ellipses  
 Assessor's Parcel Numbers Shown in Circles