

SE 1/4 SE 1/4 SE 1/4 SEC. 6 & S 1/2 SW 1/4 SEC. 5, T06S, R14W, S.M.

173-410

021

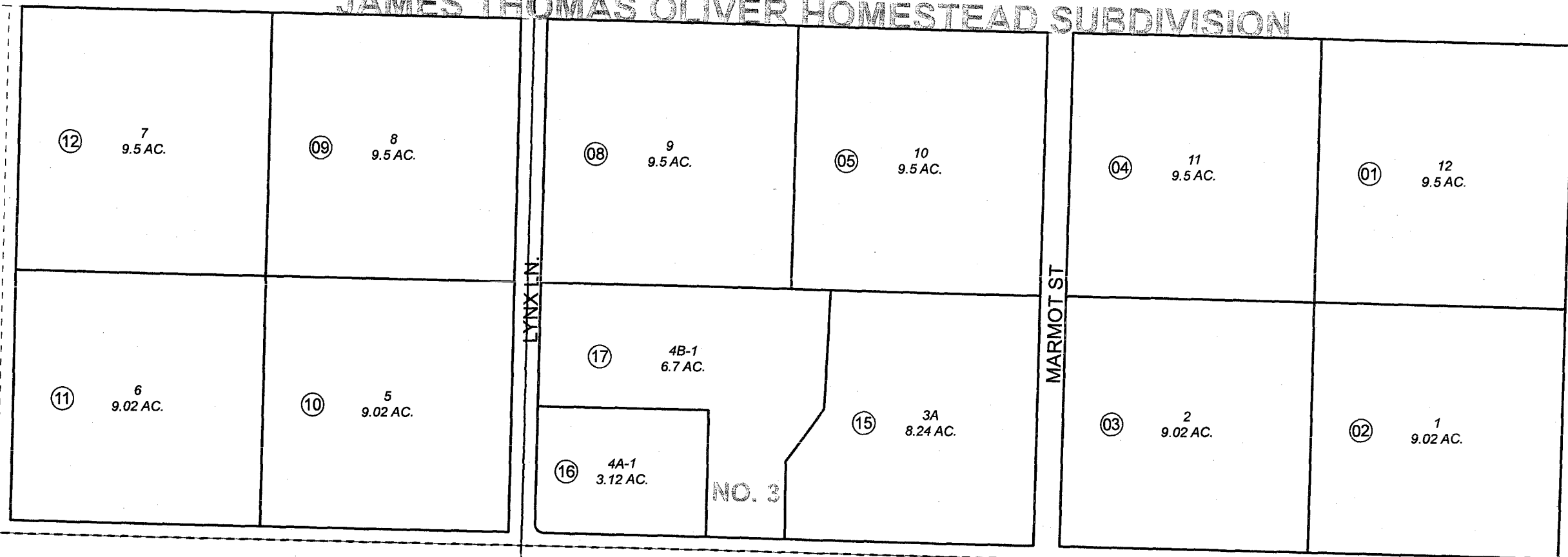
JAMES THOMAS OLIVER HOMESTEAD SUBDIVISION

CARIBOU LN.

LYNX LN.

MARMOT ST.

PORCUPINE LN.



DENEKI TRL.

021



JANUARY 3, 2007

For 2007 assessment roll		
Delete	Add	Revise
To		
6,13,14	15-17	

Assessor's Map  
Kenai Peninsula Borough

JAMES THOMAS OLIVER HOMESTEAD SUB □ HM0730638  
 JAMES THOMAS OLIVER HOMESTEAD SUB NO 2 □ HM0820030  
 JAMES THOMAS OLIVER HOMESTEAD SUB NO 3 □ HM2006103

This map is prepared for Kenai Peninsula Borough Assessing Dept. use only and is not intended for conveyance nor is it a survey.  
 Note- Assessor's block Numbers Shown in Ellipses  
 Assessor's Parcel Numbers Shown in Circles