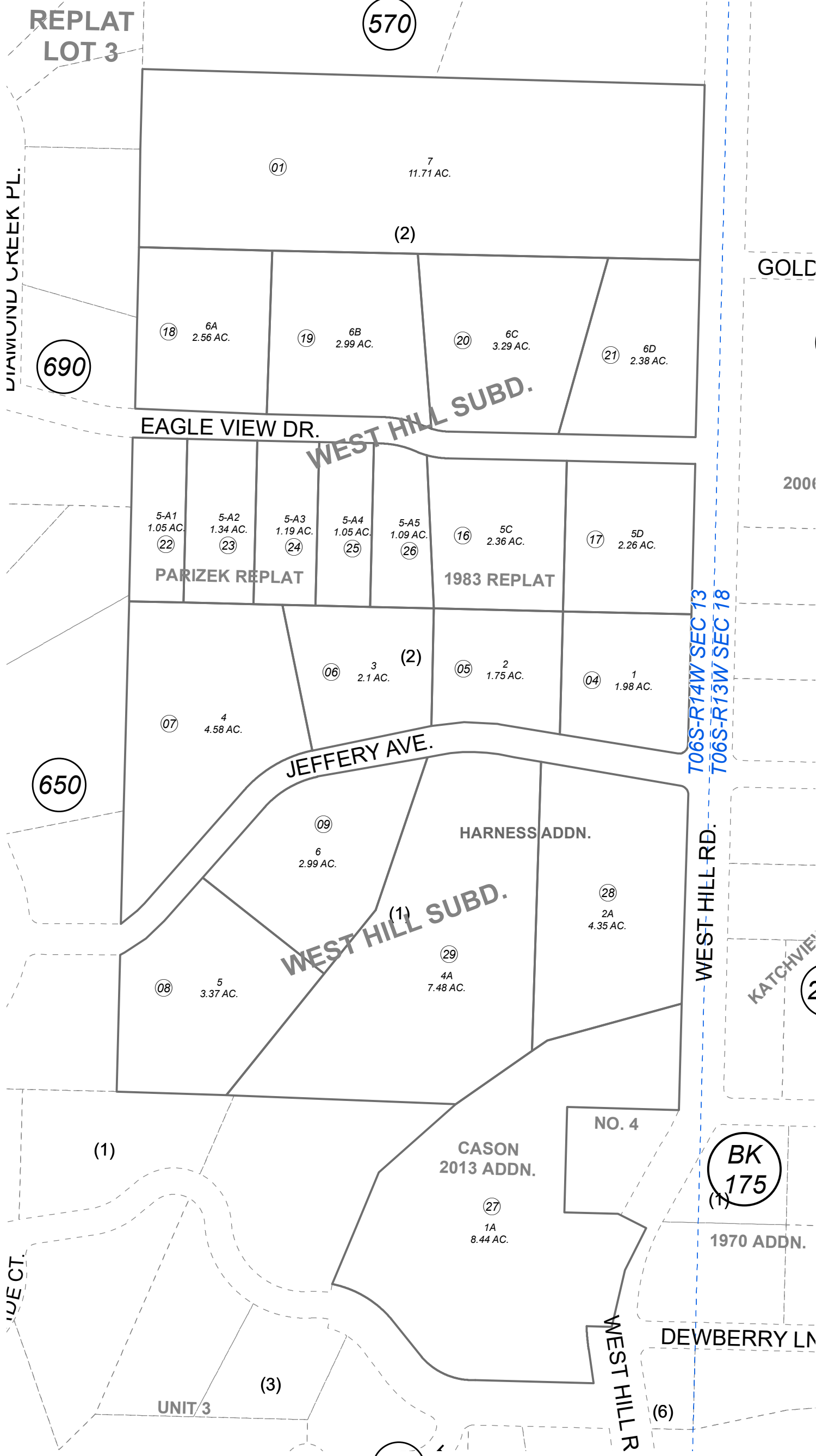


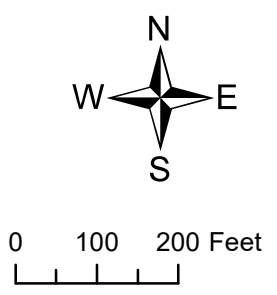
173-480

POR. SEC. 13, T06S, R14W, S.M.



SEPTEMBER 9, 2022

For 2023 assessment roll	
Delete	Add
10, 12, 13	28, 29



WEST HILL SUB HM0750011
 WEST HILL SUB LOT 5 BLK 2 1983 REPLAT HM0830092
 WEST HILL SUB LOT 6 BLK 2 1983 REPLAT HM0840054
 WEST HILL SUB PARIZEK REPLAT HM2007034
 WEST HILL SUB CASON 2013 ADDN HM2013035
 WEST HILL SUB HARNESS ADDN HM2022016

This map is prepared for Kenai Peninsula Borough Assessing Dept. use only and is not intended for conveyance nor is it a survey.

Note- Assessor's block Numbers Shown in Ellipses Assessor's Parcel Numbers Shown in Circles

Assessor's Map Kenai Peninsula Borough