

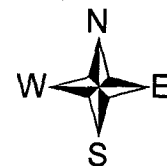
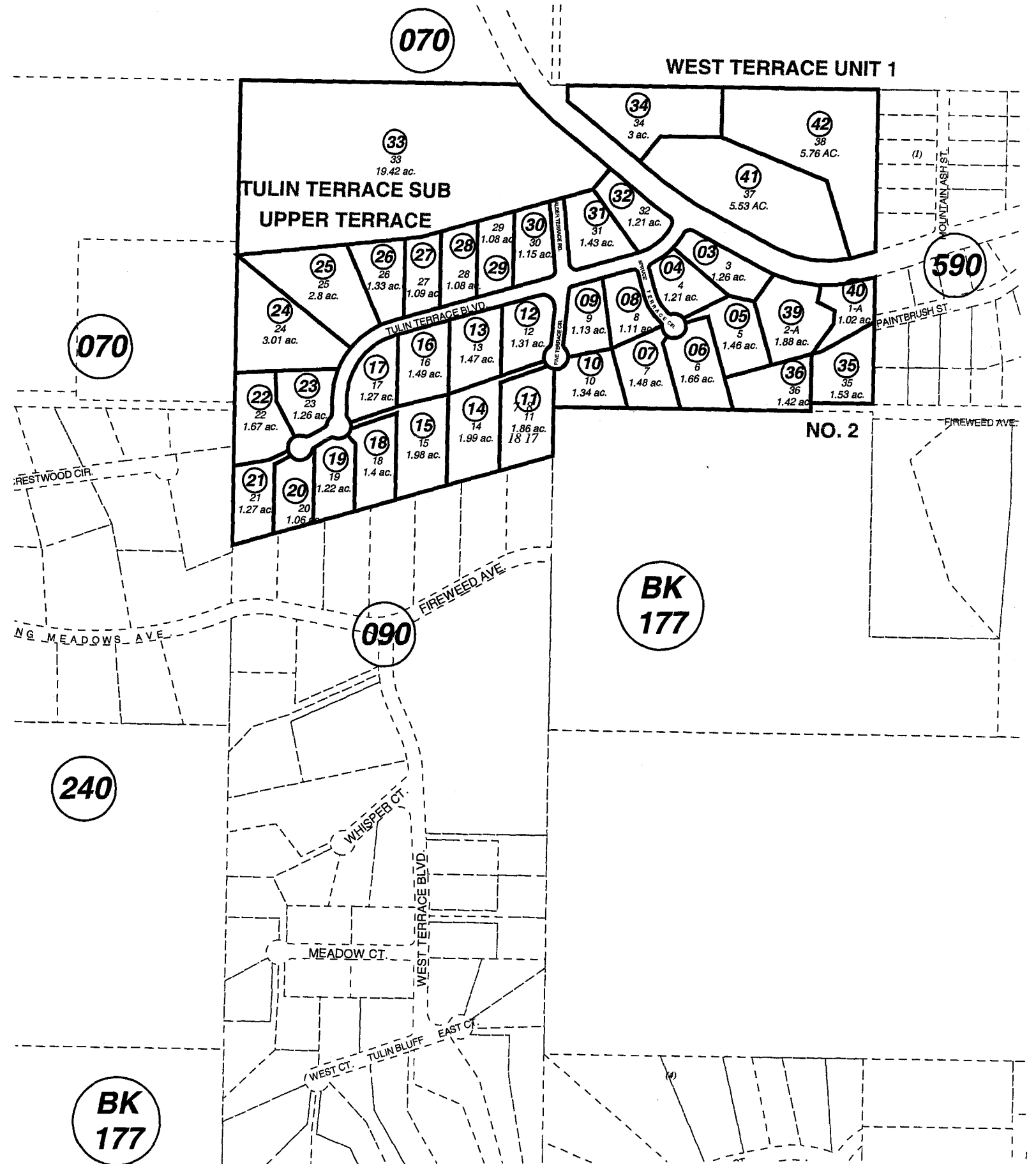
POR. SEC. 7,8 & 18, T06S, R13W, S.M.

173-080

This map is prepared for Kenai Peninsula Borough Assessing Dept. use only and is not intended for conveyance nor is it a survey.

Note- Assessor's block Numbers Shown in Elipses
Assessor's Parcel Numbers Shown in Circles

TULIN TERRACE SUB UPPER TERRACE □ HM0960051
TULIN UPPER TERRACE NO 2 □ HM2001069
TULIN TERRACE SUB WEST TERRACE UNIT 1 HM2002003



JANUARY 15, 2002

For 2003 assessment roll		
Delete	Add	Revise
	To	
37	41,42	
38	173090+	

Assessor's Map
Kenai Peninsula Borough