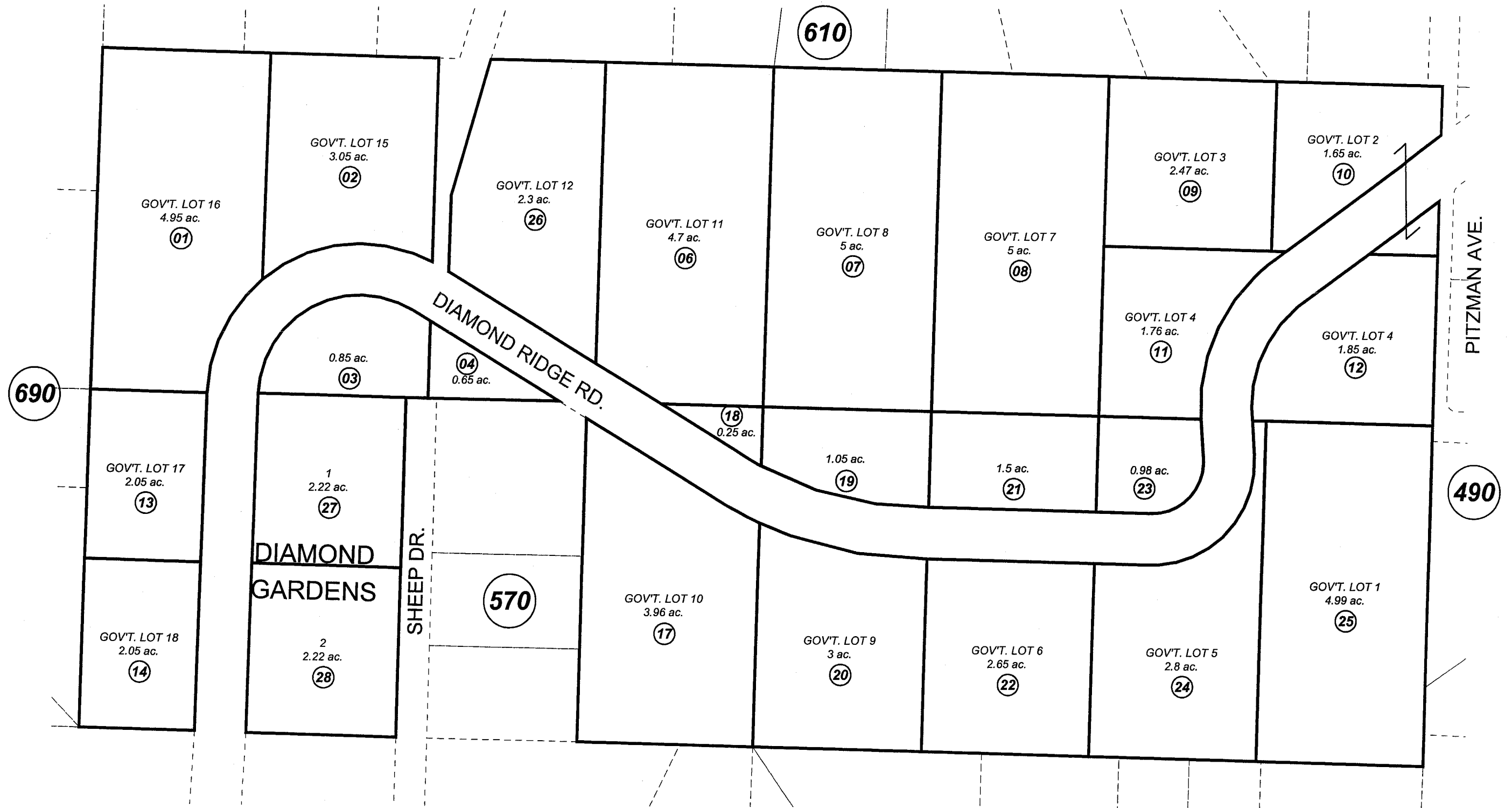


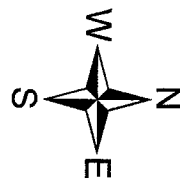
W 1/2 SE 1/4 SEC. 12, T06S, R14W, S.M.

173-040



JANUARY 14, 2002

For 2002 assessment roll		
Delete	Add	Revise
	To	
15	27,28	



Assessor's Map  
Kenai Peninsula Borough

DIAMOND GARDENS HM2001071

Note- Assessor's block Numbers Shown in Ellipses  
Assessor's Parcel Numbers Shown in Circles

This map is prepared for Kenai Peninsula Borough Assessing Dept. use only and is not intended for conveyance nor is it a survey.