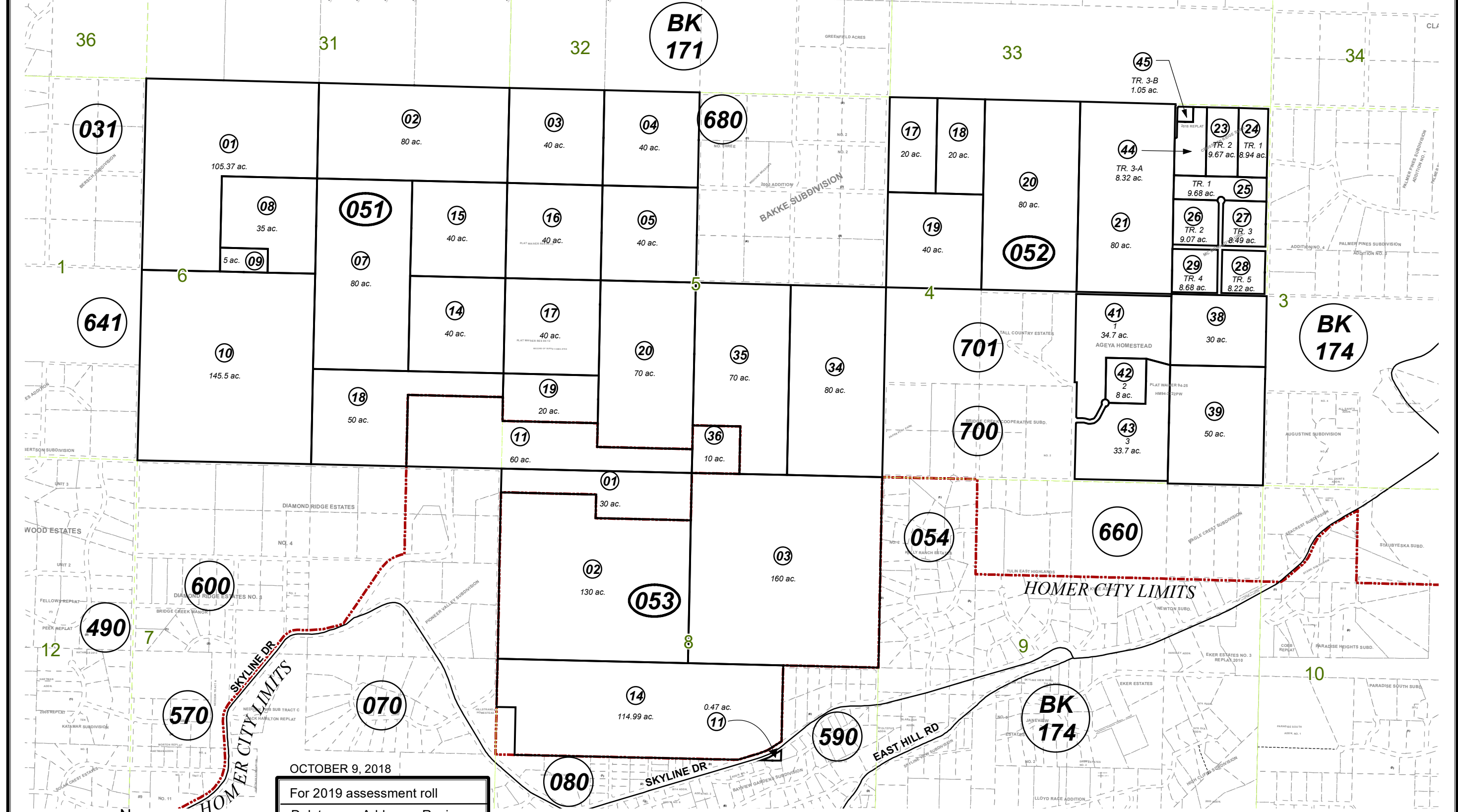


POR. SEC. 4,5,6,8, T06S, R13W, S.M.

173-050



OCTOBER 9, 2018

For 2019 assessment roll

Delete	Add	Revise
To		
05222	05244	
	05245	

Assessor's Map
Kenai Peninsula Borough

CROSSMAN RIDGE SUB □ HM0720492
 MCDONALD'S SUB □ HM0760048
 AGEYA HOMESTEAD □ HM0960009
 CROSSMAN RIDGE SUB 2018 REPLAT □ HM2018035

Note- Assessor's block Numbers Shown in Ellipses
 Assessor's Parcel Numbers Shown in Circles

This map is prepared for Kenai Peninsula Borough Assessing Dept. use only and is not intended for conveyance nor is it a survey.