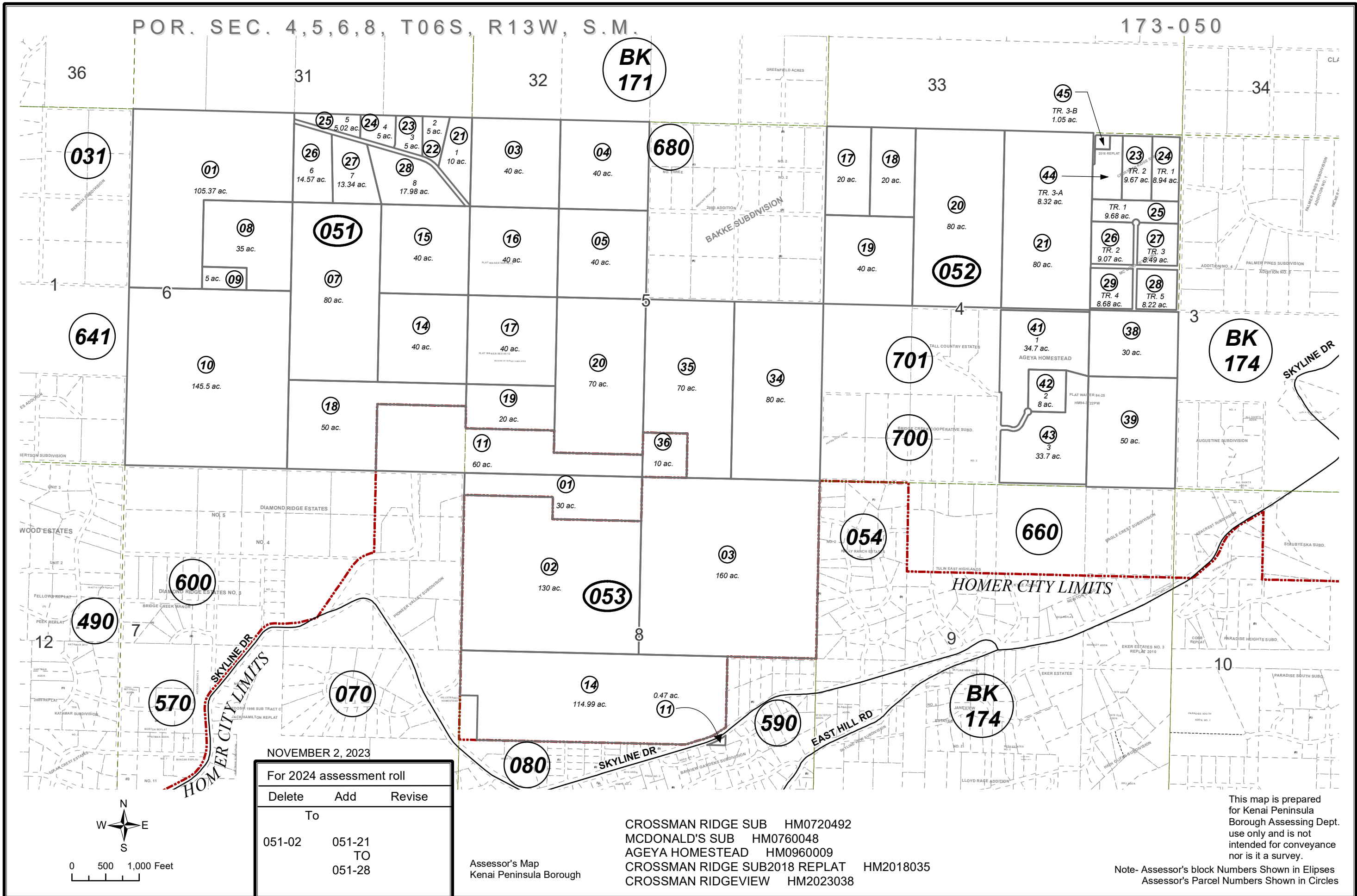


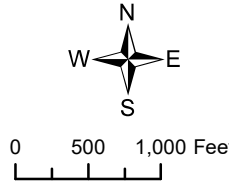
POR. SEC. 4, 5, 6, 8, T06S, R13W, S.M.

173-050



NOVEMBER 2, 2023

For 2024 assessment roll		
Delete	Add	Revise
	To	
051-02	051-21	
	TO	
	051-28	



Assessor's Map
Kenai Peninsula Borough

CROSSMAN RIDGE SUB HM0720492
 MCDONALD'S SUB HM0760048
 AGEYA HOMESTEAD HM0960009
 CROSSMAN RIDGE SUB 2018 REPLAT HM2018035
 CROSSMAN RIDGEVIEW HM2023038

This map is prepared for Kenai Peninsula Borough Assessing Dept. use only and is not intended for conveyance nor is it a survey.

Note- Assessor's block Numbers Shown in Ellipses
 Assessor's Parcel Numbers Shown in Circles