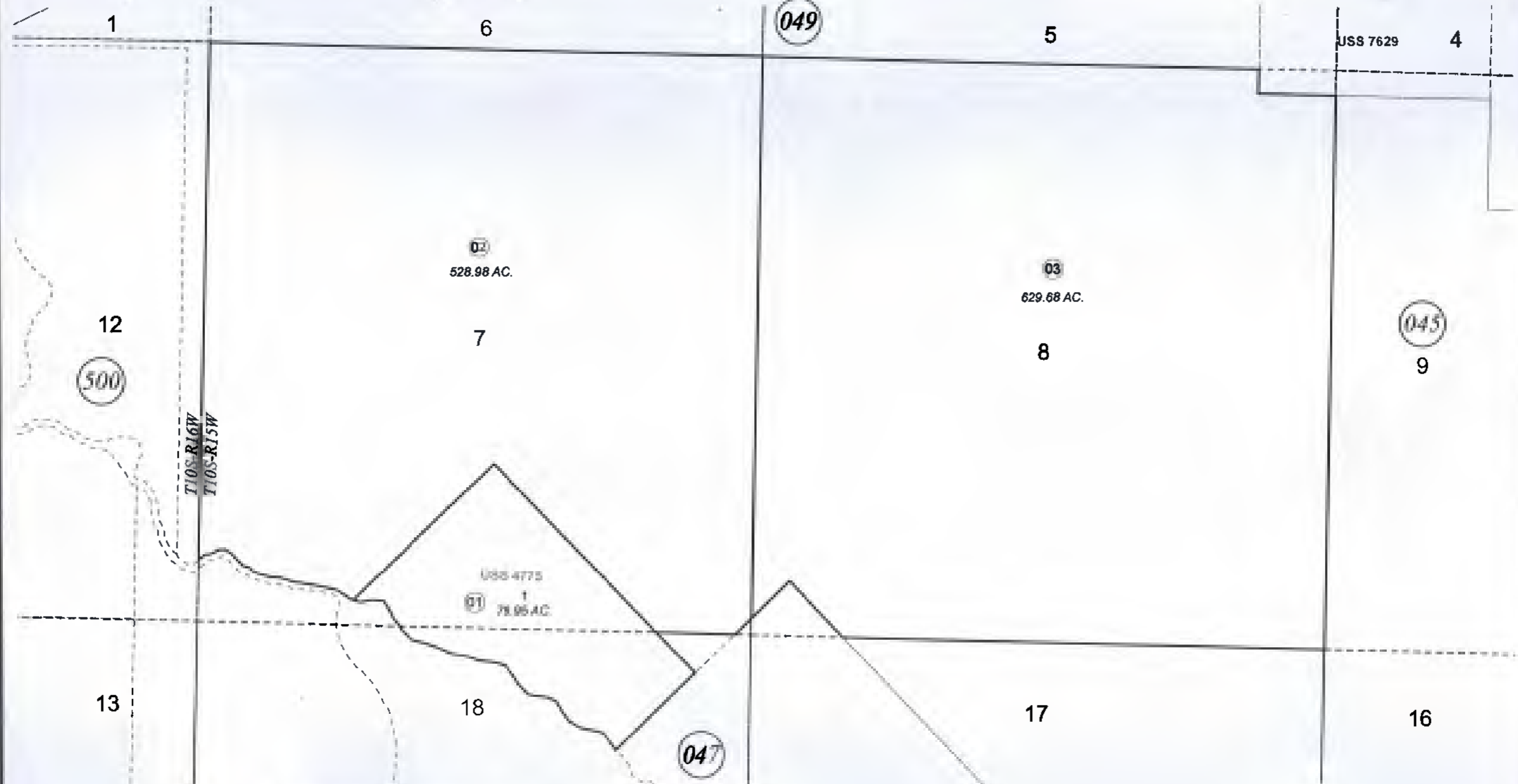


SEC. 7 & 8, T10S, R15W, S.M.

191-048



OCTOBER 3, 2012

For 2013 assessment roll		
Delete	Add	Revise
	To	02,03
	(ACREAGE CHANGE)	



Assessor's Map
Kenai Peninsula Borough

US SURVEY 4774 SL0004775

This map is prepared for Kenai Peninsula Borough Assessing Dept. use only and is not intended for conveyance nor is it a survey.

Note- Assessor's block Numbers Shown in Ellipses
Assessor's Parcel Numbers Shown in Circles