

GOV'T LOT 2, POR. GOV'T LOT 3, & POR. SW1/4 NE1/4,
SEC. 12, T02N, R12W, S.M.

(260)

137-140

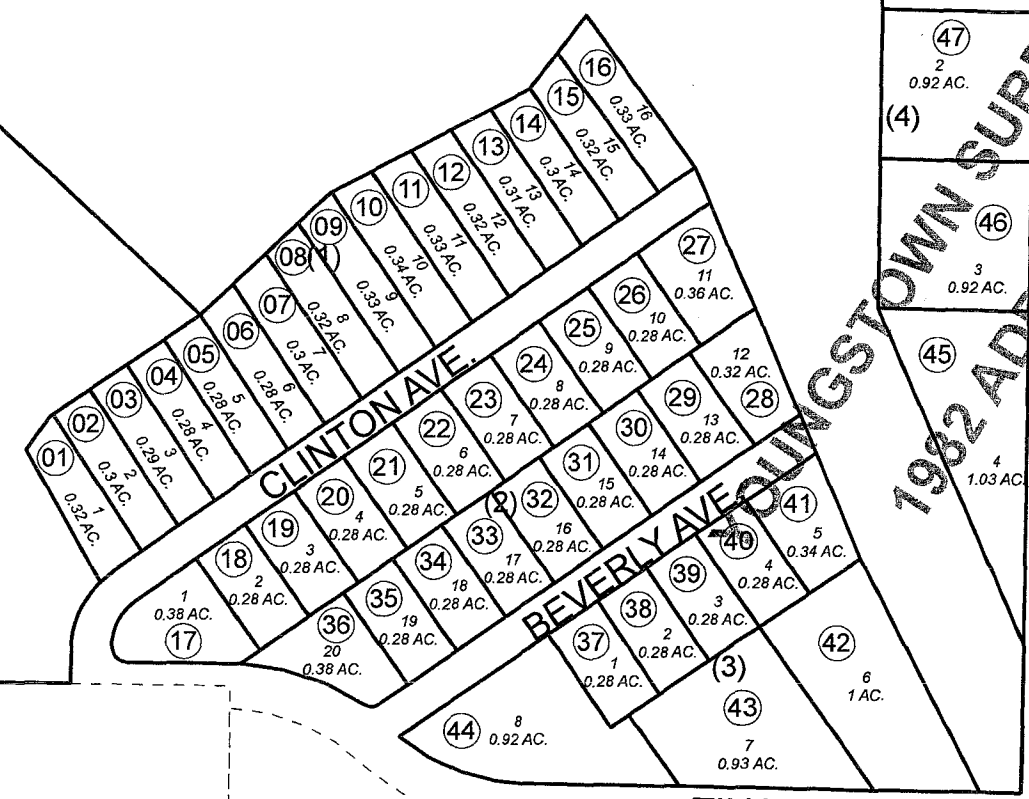
ICHABOD DR

(022)

(60)
19.87 AC.

(59)
TR. A
21.49 AC.

YOUNGSTOWN SUBD.
HUDSON ADDN.



YOUNGSTOWN SUBD.
1982 ADDITION

(57)
5
0.77 AC. 1988 ADDITION

(56)⁸
0.77 AC. 2003 ADDITION

(48)
1
0.92 AC.

(49)
1
0.92 AC.

(47)
2
0.92 AC. (4)

(50)
2
0.92 AC.

(46)
3
0.92 AC.

(51)
3
0.92 AC.

(45)
4
1.03 AC.

(52)
4
0.92 AC. (5)

(53)
5
0.92 AC.

(54)
6
0.93 AC.

(55)
7
0.93 AC.

2003 ADDITION

CRO

SASKATOON AV

RAY ST.

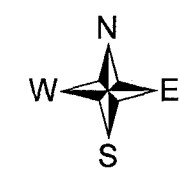
(022)

S
MA

(022)

MAY 4, 2009

For 2010 assessment roll		
Delete	Add	Revise
	To	
58	59,60	
022-10		



Assessor's Map
Kenai Peninsula Borough

YOUNGSTOWN SUB KN0001745
YOUNGSTOWN SUB 1982 ADDN KN0830055
YOUNGSTOWN SUB 1988 ADDN KN0880069
YOUNGSTOWN SUB HUDSON ADDN KN2009016

This map is prepared for Kenai Peninsula Borough Assessing Dept. use only and is not intended for conveyance nor is it a survey.
Note- Assessor's block Numbers Shown in Elipses
Assessor's Parcel Numbers Shown in Circles