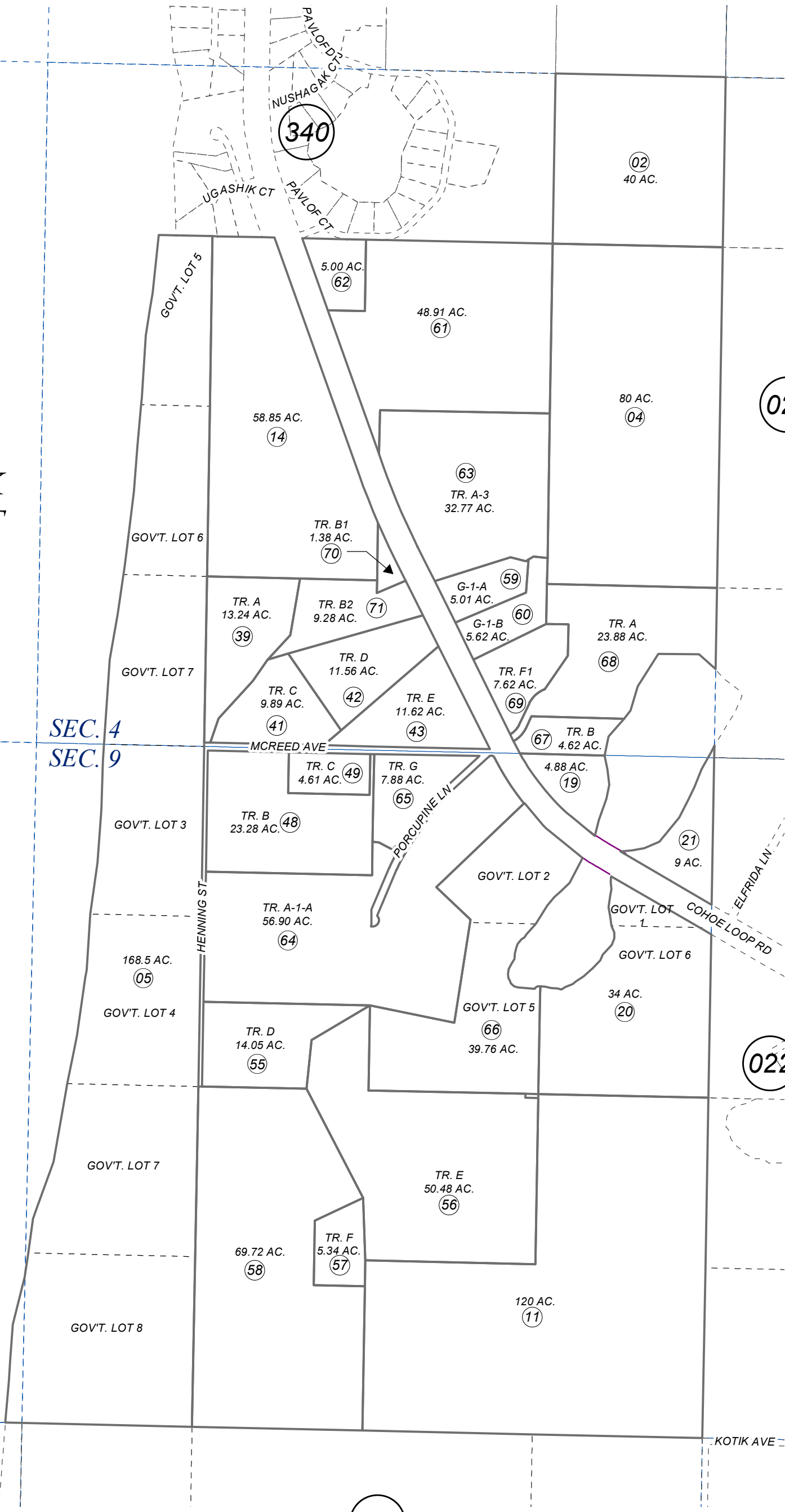


137-010

SEC. 4 & 9, T02N, R12W, S.M.

COOK INLET

SEC. 4
SEC. 9



- WARLE TRACTS KN0810168
- MCREED SUB KN0930012
- PORCUPINE LAKE SUB NO 2 KN0930032
- WARLE TRACTS NO 2 KN0940057
- PORCUPINE LAKE SUB # 3 KN2000066
- PLAT WAIVER RESOLUTION 2003-46 2003-014944-0
- PLAT WAIVER RESOLUTION 2003-48 2004-000546-0
- WARLE TRACTS #3 KN2004094
- PORCUPINE LAKE SUB # 4 KN2005001
- BOTTLENECK LAKE TRACTS KN2006032
- RECORD OF SURVEY KN2021035
- MCREED SUB 2021 REPLAT KN2021086



0 250 500 1,000 Feet

DECEMBER 7, 2021

For 2022 assessment roll	
Delete	Revise
To	
27,40	70,71

This map is prepared for Kenai Peninsula Borough Assessing Dept. use only and is not intended for conveyance nor is it a survey.

Note- Assessor's block Numbers Shown in Ellipses Assessor's Parcel Numbers Shown in Circles

Assessor's Map Kenai Peninsula Borough