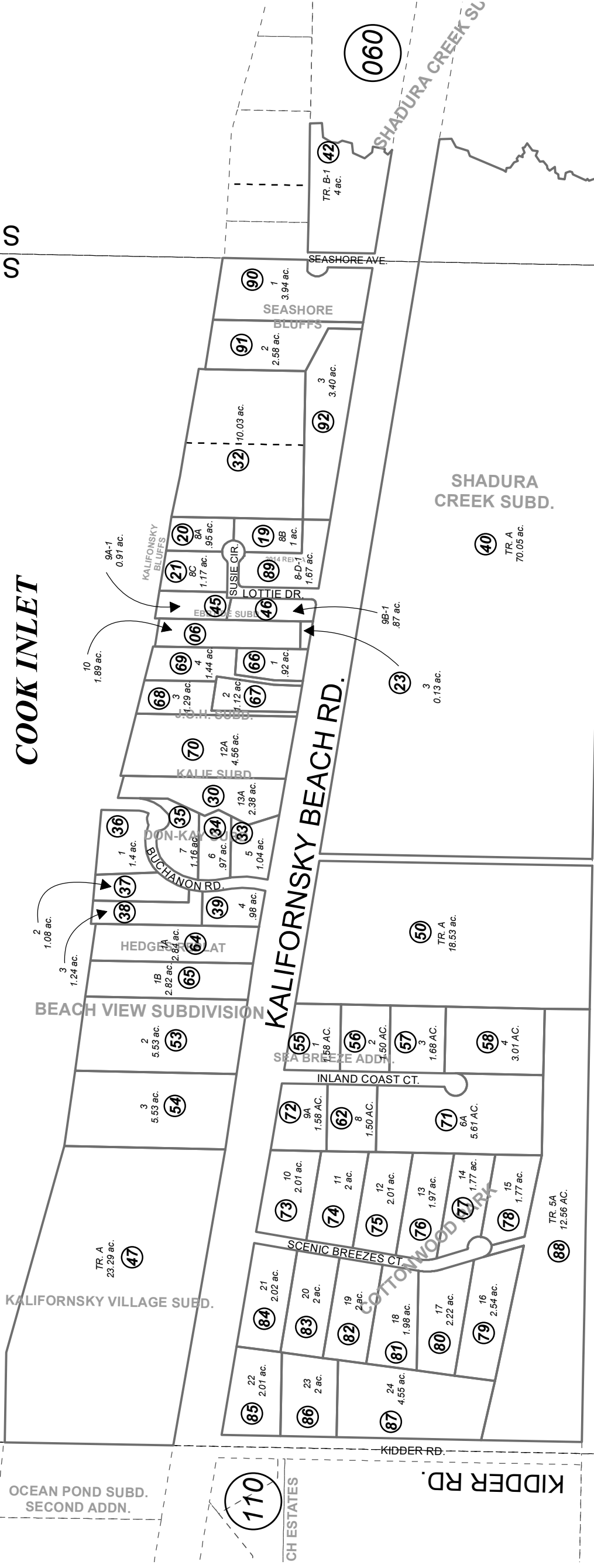


POR. SEC. 13 & 24, T04N, R12W, S.M.

131-070

SEC. 25
SEC. 24

SEC. 24
SEC. 13



050

060

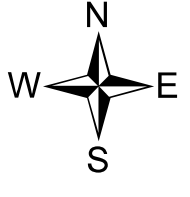
110

- KALIFONSKY BEACH ACRES SUB KN0750074
- KALIFONSKY BLUFFS SUB KN0770060
- SEASHORE SUB KN0780027
- KALIF SUB KN0830254
- DON-KAY SUB KN0850205
- SHADURA CREEK SUB KN0910005
- SHADURA CREEK SUB NO 2 KN0940014
- EBBTIDE SUB NO 2 KN0990045
- KALIFORNIA VILLAGE SUB KN2002072
- BEACH VIEW SUB KN2004051
- BEACH VIEW SUB SEA BREEZE ADDN KN2005047
- BEACH VIEW SUB HEDGES REPLAT KN2006013
- JOH SUB KN2007043
- COTTONWOOD PARK SUB KN2008004
- KALIFONSKY BLUFFS 2014 REPLAT KN2014070
- SEASHORE BLUFFS KN2021010

Assessor's Map
Kenai Peninsula Borough

Note- Assessor's block Numbers Shown in Ellipses
Assessor's Parcel Numbers Shown in Circles

This map is prepared
for Kenai Peninsula
Borough Assessing Dept.
use only and is not
intended for conveyance
nor is it a survey.



0 200 400 Feet

MAY 14, 2021

For 2022 assessment roll		
Delete	Add	Revise
To		
31,43	90-92	