

PORTION OF SEC. 10, T1S, R1W, SEWARD MERIDIAN

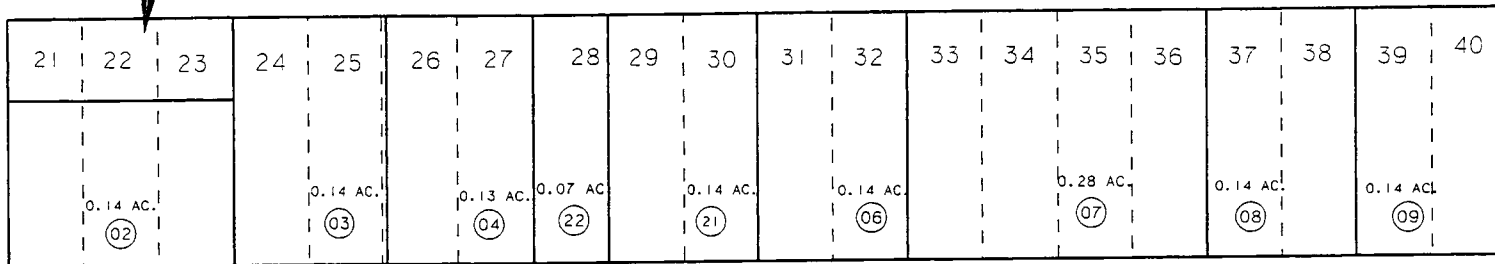
149-160

(14)

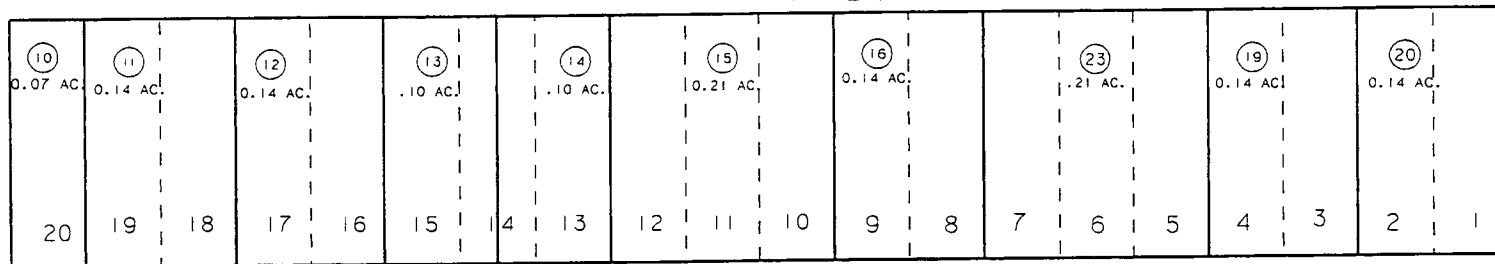
SIXTH AVE.

0.07 AC.

(01)



(18)



BALLAINE BLVD.

(15)

ADAMS ST.

JEFFERSON ST.

BK
148

(18)

DATE: JAN.-17, 1994

FOR 1994 ASSESSMENT ROLL

DELETE	ADD	REVISED
TO		
17, 18		23

ORIGINAL TOWNSITE OF SEWARD SW000001
BLOCK 18

NOTE - Assessor's Block Numbers Shown in Ellipses Assessor's Map
Assessor's Parcel Numbers Shown in Circles Kenai Peninsula Borough

THIS MAP IS PREPARED FOR KENAI PENINSULA BOROUGH ASSESSING DEPT. USE ONLY AND IS NOT INTENDED FOR ANY OTHER USE OR REPRESENTATION