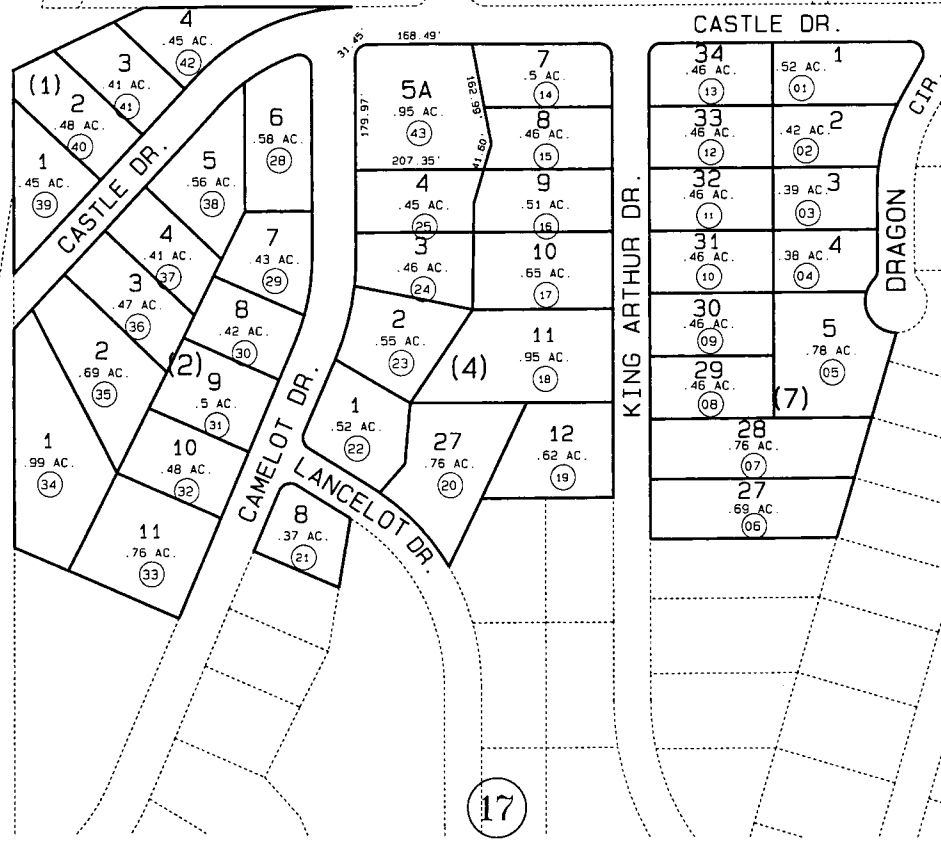


1

CAPE RESURRECTION
CIR.

SEWARD HWY.



1

21

17



DATE: NOV. 1, 1999

| | | |
|--------------------------|-----|---------|
| FOR 2000 ASSESSMENT ROLL | | |
| DELETE | ADD | REVISED |
| TO | | |
| 26,27 | 43 | |

Assessor's Map
Kenai Peninsula Borough

CAMELOT BY THE SEA SUB SW000076
CAMELOT BY THE SEA SUB VANDENBURG REPLAT SW990012

THIS MAP IS PREPARED FOR KENAI PENINSULA BOROUGH ASSESSING DEPT. USE ONLY AND IS NOT INTENDED FOR CONVEYANCE. NOR IS IT A SURVEY.

NOTE - Assessor's Block Numbers Shown in Ellipses
Assessor's Parcel Numbers Shown in Circles