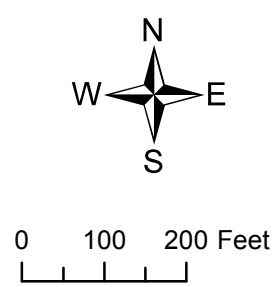
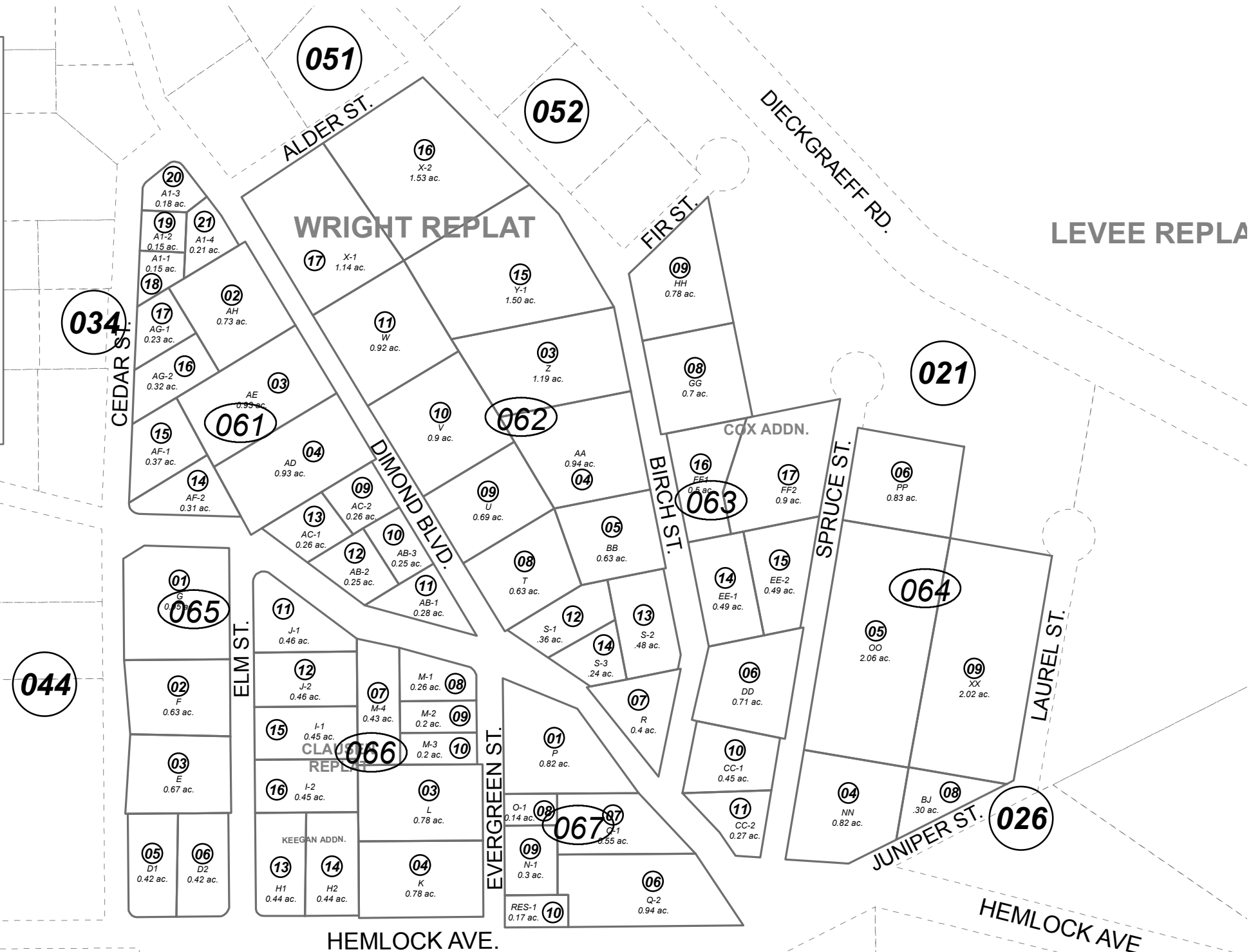
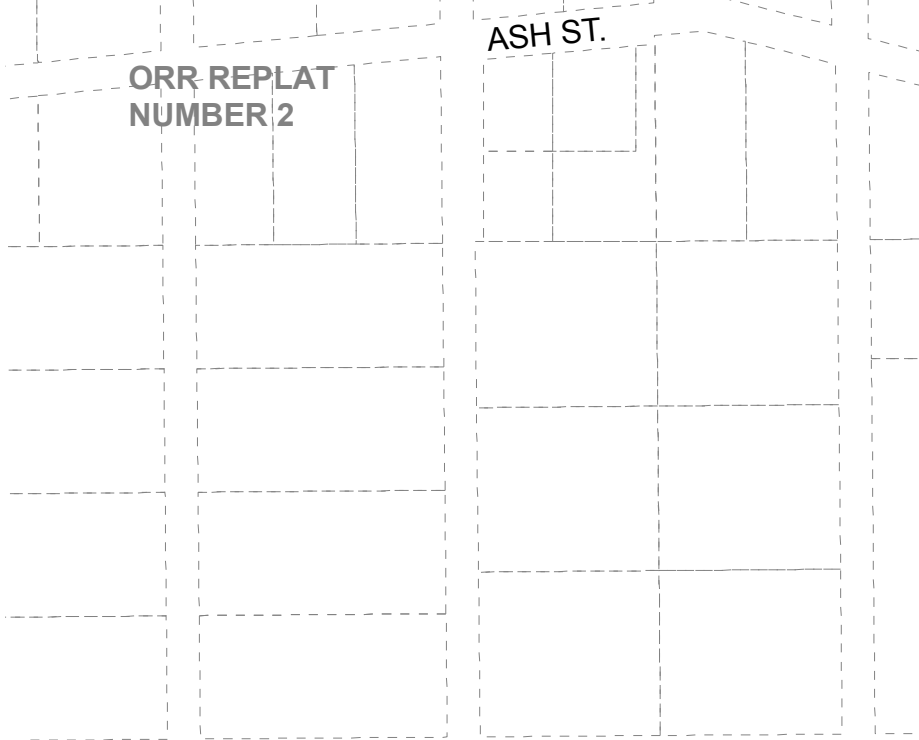


FOREST ACRES SUB SW0000017
 FOREST ACRES RESUB AB SW0760006
 FOREST ACRES RESUB LOT AC SW0760006
 FOREST ACRES RESUB LOT AF SW0760006
 FOREST ACRES RESUB LOT AG SW0760006
 FOREST ACRES RESUB LOT CC SW0760006
 FOREST ACRES SUB RESUB OF LOT AB SW0760006
 FOREST ACRES RESUB LOT D SW0770011
 FOREST ACRES RESUB LOT A1 SW0770013
 FOREST ACRES RESUB LOTS N O Q & RESERVE SW0780008
 FOREST ACRES RESUB LOT M SW0790003
 VELMA SUB SW0790007
 FOREST ACRES SUB WILLIAMS ADDN SW0840014
 FOREST ACRES SUB KEEGAN ADDN SW0940027
 FOREST ACRES SUB COX ADDN SW0960022
 FOREST ACRES SUB ORR REPLAT SW2001017
 FOREST ACRES SUB CLAUSEN REPLAT SW2002002
 FOREST ACRES SUB WRIGHT REPLAT SW2002017



AUGUST 19, 2016

For 2017 assessment roll		
Delete	Add	Revise
	To	06109-11, 06113, 06609
(ACREAGE REVISION)		

Assessor's Map
 Kenai Peninsula Borough

This map is prepared for Kenai Peninsula Borough Assessing Dept. use only and is not intended for conveyance nor is it a survey.
 Note- Assessor's block Numbers Shown in Ellipses
 Assessor's Parcel Numbers Shown in Circles