

131-650

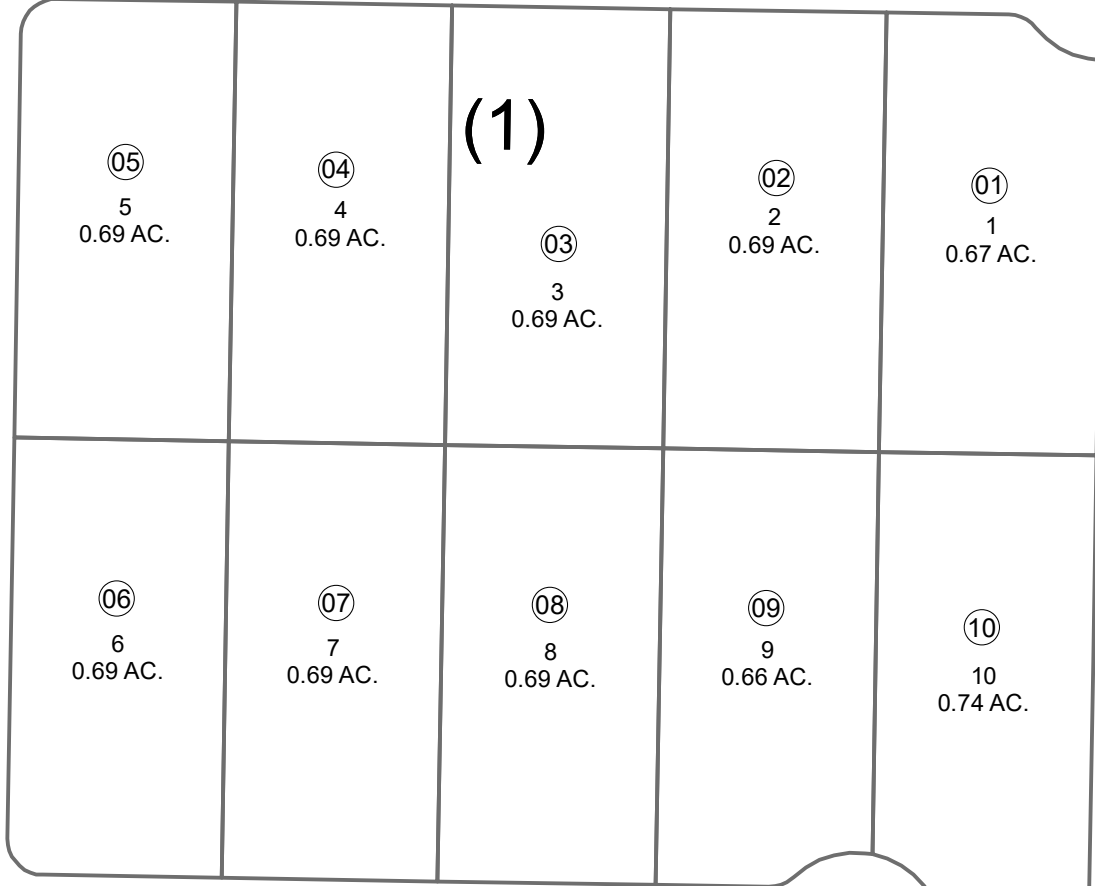
POR. W1/2 W1/2 SW1/4 SEC. 2, T04N, R11W, S.M.

RD.

680

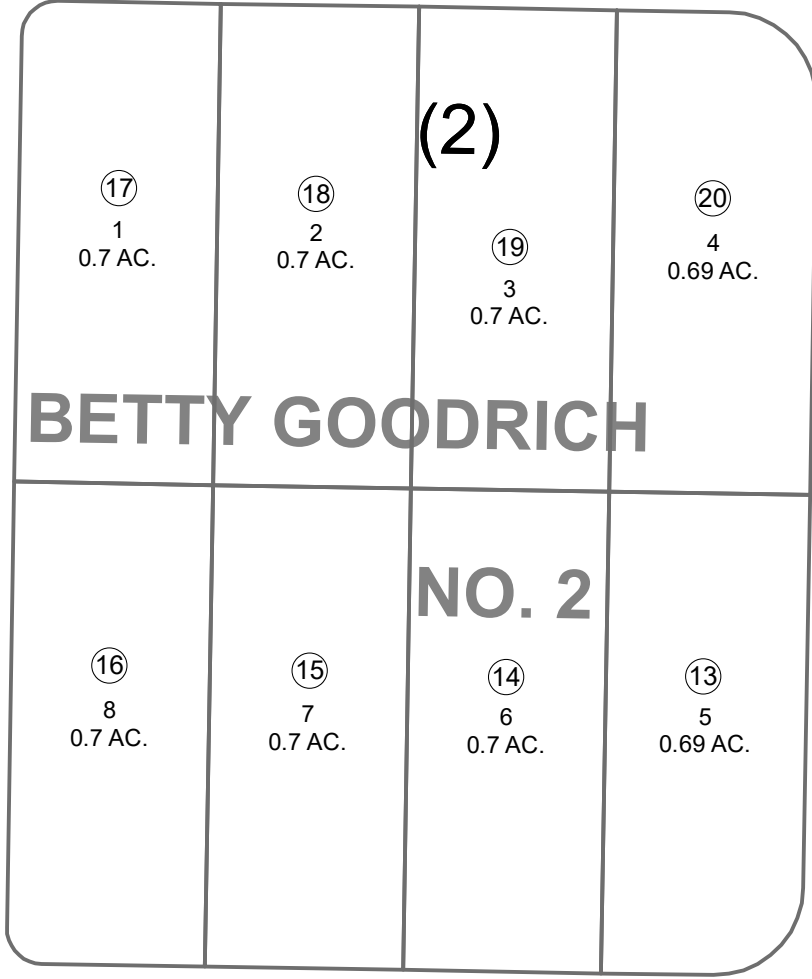
042

MELINDA WAY



SNIPE AVE.

710



BETTY GOODRICH

NO. 2

BEAR BOTTOM ST.

FAITH AVE.

(1)

660



OCTOBER 6, 2020

For 2021 assessment roll	
Delete	Add
	Revise
To	131710+
11	

This map is prepared for Kenal Peninsula Borough Assessing Dept. use only and is not intended for conveyance nor is it a survey.

Note- Assessor's block Numbers Shown in Ellipses Assessor's Parcel Numbers Shown in Circles

Assessor's Map Kenal Peninsula Borough BETTY GOODRICH SUB NO 2 KN0810072