

SE1/4 SEC. 10, T04N, R11W, S.M.

131-670

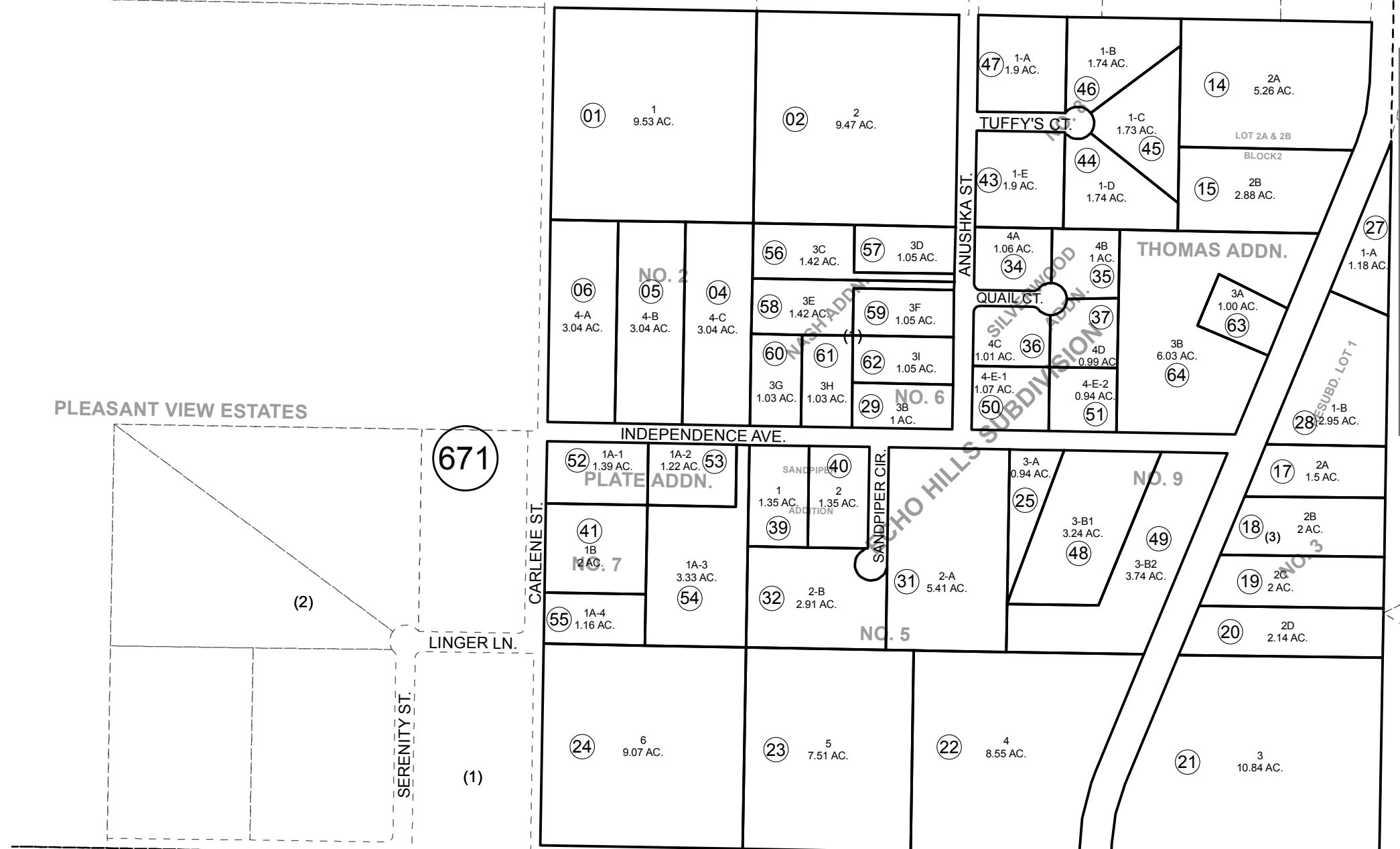
041

PART 1

HEIGHTS ADDITION

BROWN REPLAT

- ECHO HILLS SUB AMENDED KN0780017
- ECHO HILLS SUB LOTS 2A & 2B BLOCK 2 KN0810140
- ECHO HILLS SUB NO 2 KN0810142
- ECHO HILLS SUB NO 3 KN0830012
- ECHO HILLS SUB NO 4 KN0830046
- ECHO HILLS SUB LOTS 1-A & 1-B BLOCK 3 KN0830159
- ECHO HILLS SUB NO 6 KN0830179
- ECHO HILLS SUB NO 5 KN0850021
- ECHO HILLS SUB SILVERWOOD ADDN KN0850049
- ECHO HILLS SUB SILVERWOOD ADDN KN0850089
- ECHO HILLS SUB NO 5 SANDPIPER ADDN KN0850106
- ECHO HILLS SUB NO 7 KN0850186
- ECHO HILLS SUB NO 8 KN0860243
- ECHO HILLS SUB NO 9 KN0910054
- ECHO HILLS SUB SILVERWOOD ADDN LOT 4-E KN0920006
- ECHO HILLS SUB PLATE ADDN KN2007096
- ECHO HILLS SUB NASH ADDN KN2008014
- ECHO HILLS SUB THOMAS ADDN KN2017005



PLEASANT VIEW ESTATES

671

042

2016 ADDN.

091

720

MAY 3, 2017

For 2018 assessment roll		
Delete	Add	Revise
To		
11	63,64	



0 100 200 400 Feet

Assessor's Map  
Kenai Peninsula Borough

This map is prepared for Kenai Peninsula Borough Assessing Dept. use only and is not intended for conveyance nor is it a survey.

Note- Assessor's block Numbers Shown in Ellipses  
Assessor's Parcel Numbers Shown in Circles