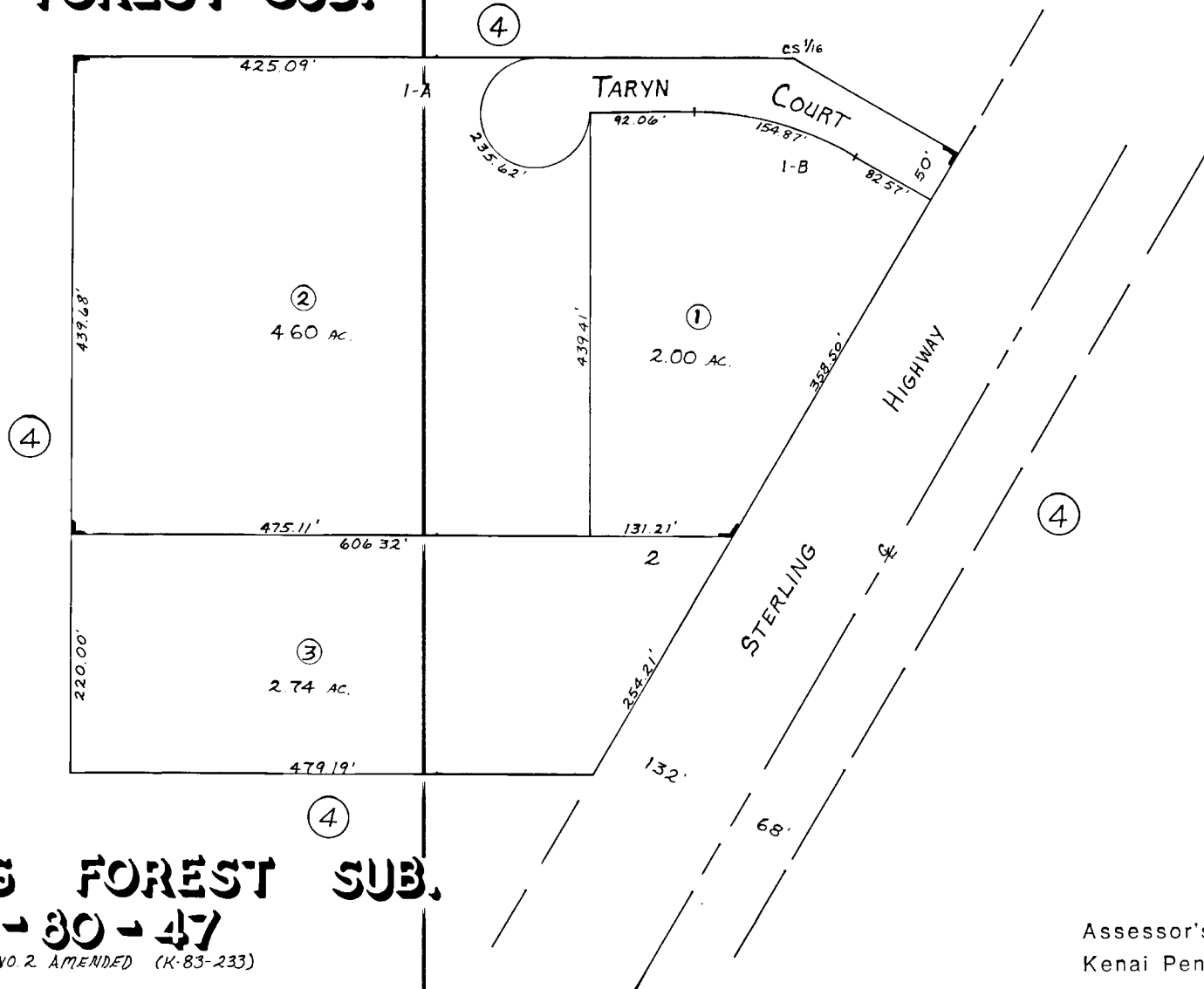


STERLING FOREST SUB.

NO. 2

K-31-31



STERLING FOREST SUB.

K-30-47

STERLING FOREST SUB NO. 2 AMENDED (K-83-233)

Assessor's Map
Kenai Peninsula Borough, Alaska

NOTE - Assessor's Block Numbers Shown in Ellipses
Assessor's Parcel Numbers Shown in Circles