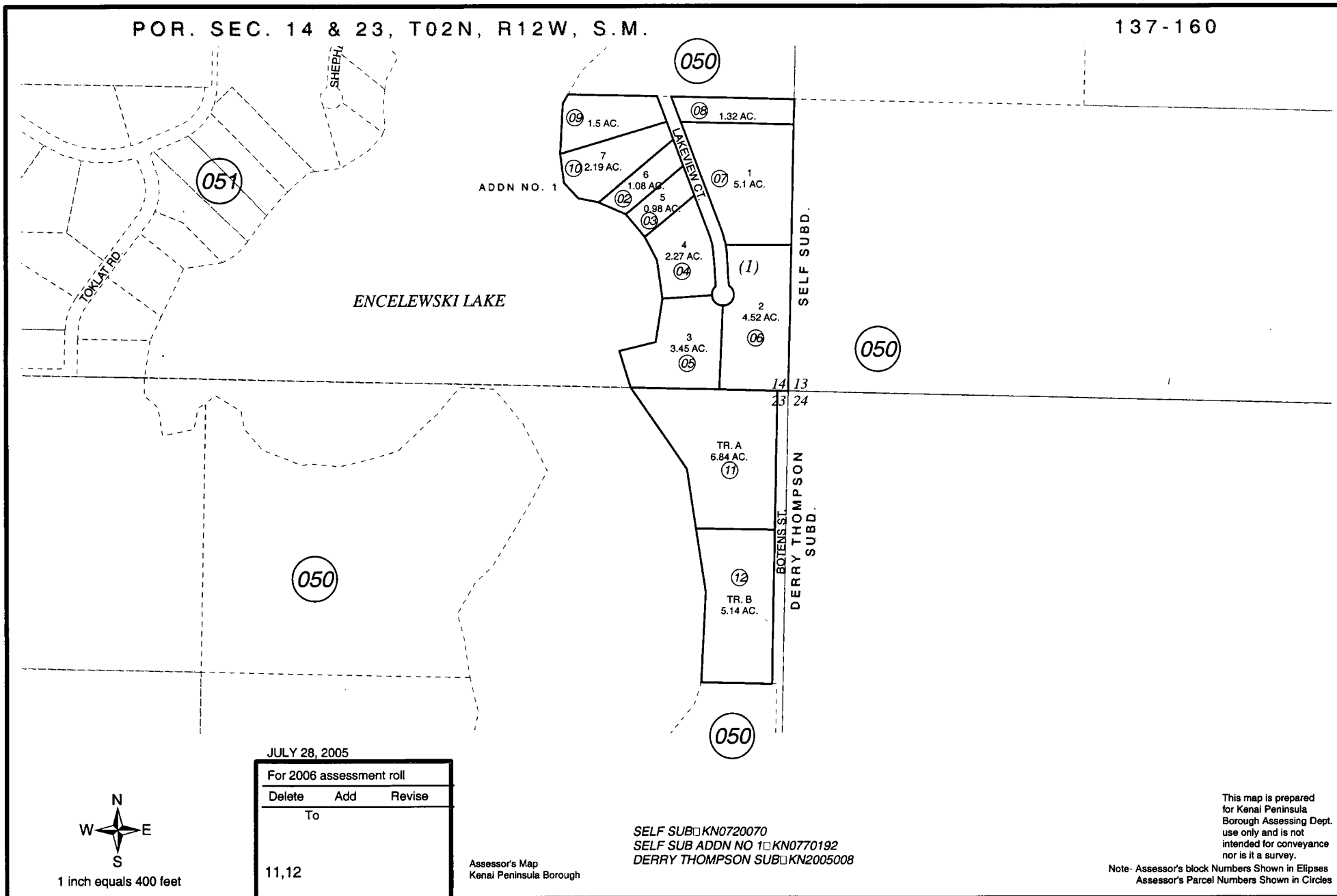


POR. SEC. 14 & 23, T02N, R12W, S.M.

137-160



JULY 28, 2005

| For 2006 assessment roll | | |
|--------------------------|-----|--------|
| Delete | Add | Revise |
| | | To |
| 11,12 | | |



1 inch equals 400 feet

Assessor's Map
Kenai Peninsula Borough

SELF SUB KN0720070
 SELF SUB ADDN NO 1 KN0770192
 DERRY THOMPSON SUB KN2005008

Note- Assessor's block Numbers Shown in Ellipses
 Assessor's Parcel Numbers Shown in Circles

This map is prepared
 for Kenai Peninsula
 Borough Assessing Dept.
 use only and is not
 intended for conveyance
 nor is it a survey.