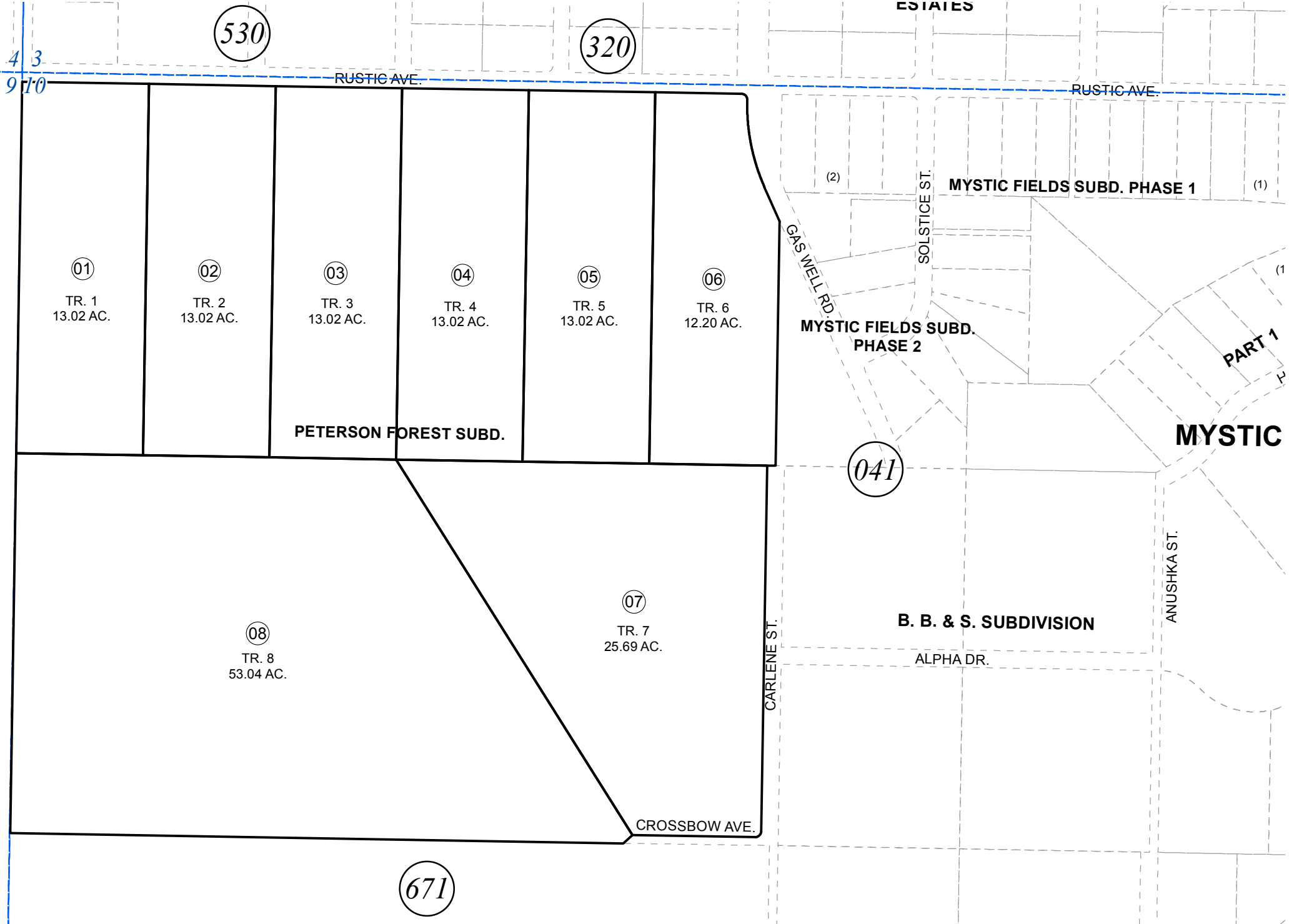


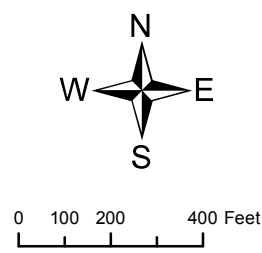
NW1/4 SEC. 10, T04N, R11W, S.M.

131-046



JULY 19, 2018

For 2019 assessment roll		
Delete	Add	Revise
To		
01-08		
NEW PAGE		



Assessor's Map  
Kenai Peninsula Borough

PETERSON FOREST SUB KN2018035

This map is prepared for Kenai Peninsula Borough Assessing Dept. use only and is not intended for conveyance nor is it a survey.

Note- Assessor's block Numbers Shown in Ellipses  
Assessor's Parcel Numbers Shown in Circles