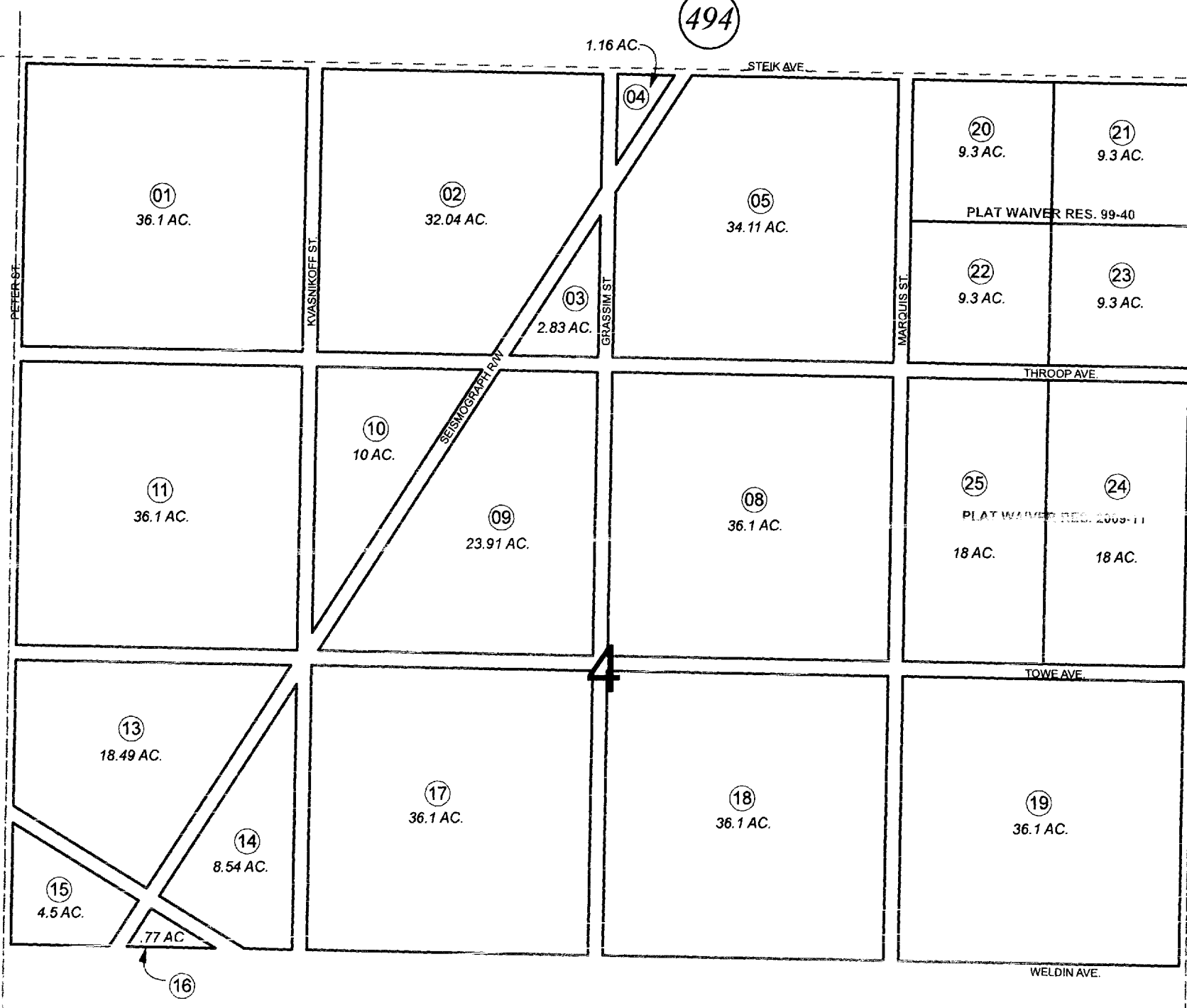


N3/4 SEC. 4, T02S, R12W, S.M.

185-496



494

494

T01S-R12W
T02S-R12W

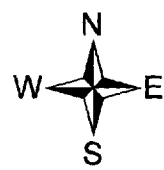
507

PLAT WAIVER RES. 98-03

CARIBOU HILLS SUBD.
HUTCHINGS ADDN.

512

497



JANUARY 13, 2011

| For 2011 assessment roll | | |
|--------------------------|-----|---------------------------|
| Delete | Add | Revise |
| 12 | | 02-05, 09-11, 13-16 |
| (ACREAGE CHANGE) | | |

Assessor's Map
Kenai Peninsula Borough

PLAT WAIVER RES 99-40 HM1999-003970
PLAT WAIVER RES 2009-11 HM2009-001719-0

This map is prepared for Kenai Peninsula Borough Assessing Dept. use only and is not intended for conveyance nor is it a survey.
Note- Assessor's block Numbers Shown in Ellipses
Assessor's Parcel Numbers Shown in Circles