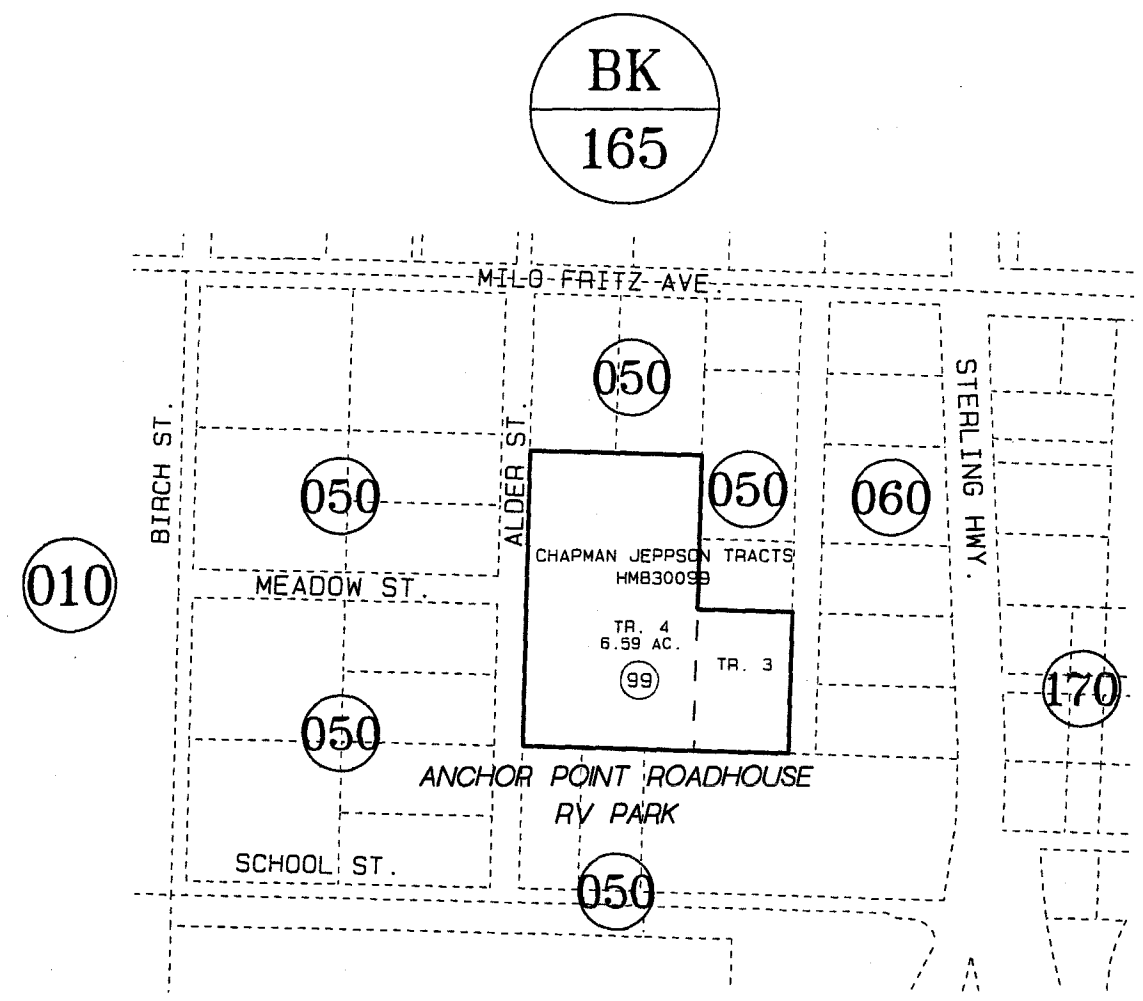


PORTION OF NE1/4 SEC. 4, T5S, R15W, SEWARD MERIDIAN

169-051

- (01) SPACE 01 (20) SPACE 20
- (02) SPACE 02 (21) SPACE 21
- (03) SPACE 03 (22) SPACE 22
- (04) SPACE 04 (23) SPACE 23
- (05) SPACE 05 (24) SPACE 24
- (06) SPACE 06 (25) SPACE 25
- (07) SPACE 07 (26) SPACE 26
- (08) SPACE 08 (27) SPACE 27
- (09) SPACE 09 (28) SPACE 28
- (10) SPACE 10 (29) SPACE 29
- (11) SPACE 11 (30) SPACE 30
- (12) SPACE 12 (31) SPACE 31
- (13) SPACE 13 (32) SPACE 32
- (14) SPACE 14 (33) SPACE 33
- (15) SPACE 15 (34) SPACE 34
- (16) SPACE 16 (35) SPACE 35
- (17) SPACE 17 (36) SPACE 36
- (18) SPACE 18 (37) SPACE 37
- (19) SPACE 19 (38) SPACE 38



DATE: SEPT. 30, 1997
 FOR 19 98 ASSESSMENT ROLL
 DELETE ADD REVISED
 TO
 NEW
 PAGE

Assessor's Map
 Kenai Peninsula Borough

THIS MAP IS PREPARED
 FOR KENAI PENINSULA
 BOROUGH ASSESSING DEPT.
 USE ONLY AND IS NOT
 INTENDED FOR ANY
 OTHER USE OR REPRESENTATION

NOTE - Assessor's Block Numbers Shown In Ellipses
 Assessor's Parcel Numbers Shown In Circles