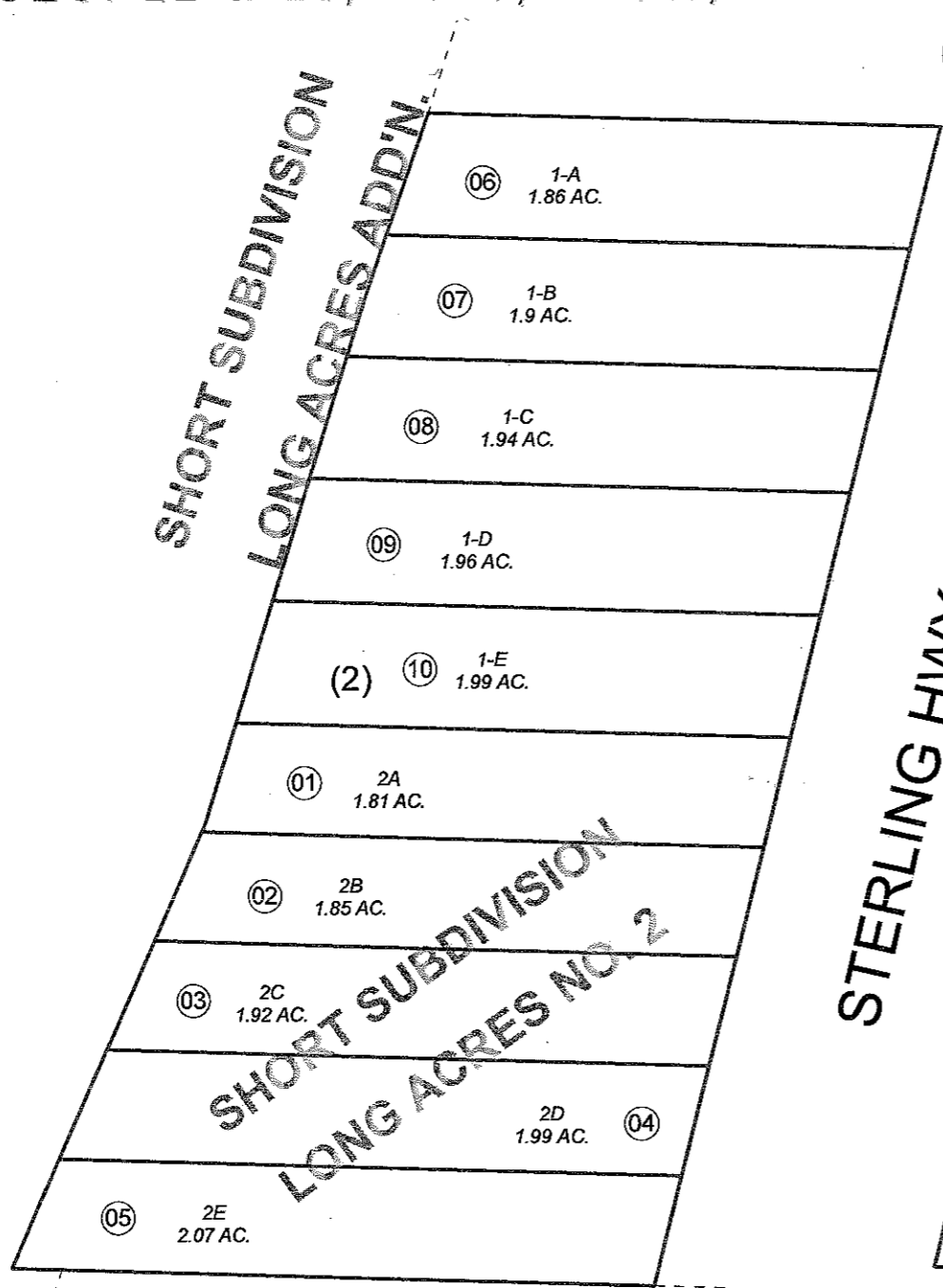


POR. SEC. 22 & 23, T04S, R15W, S.M.

165-631

COOK
INLET



STERLING HWY.

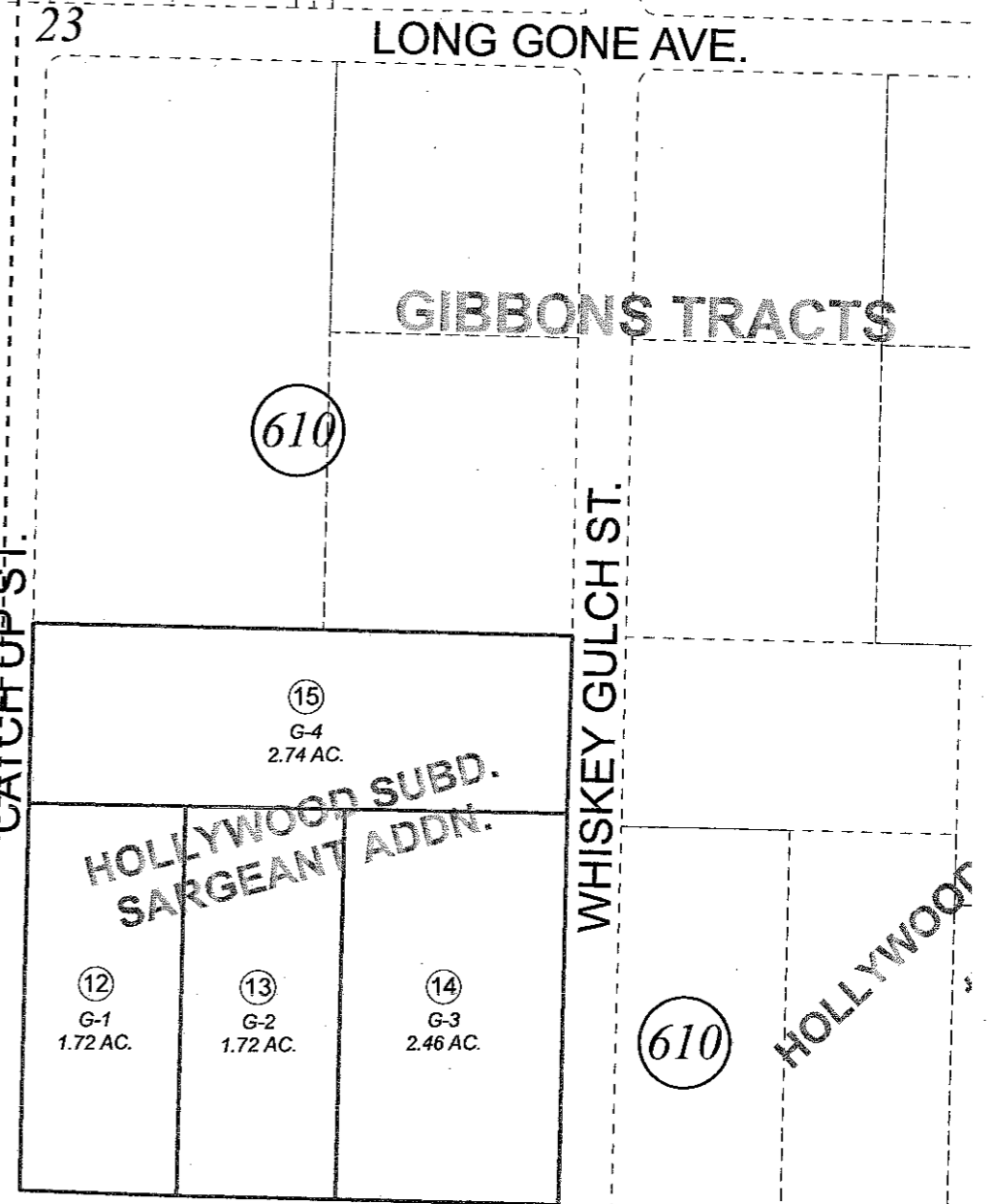
630

STERLING HWY

SHORT SUBDIVISION
(1)
1
6.01 AC.

22 23

CATCH UP ST.



LONG GONE AVE.

GIBBONS TRACTS

610

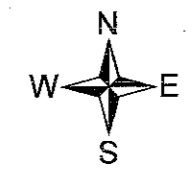
WHISKEY GULCH ST.

610

HOLLYWOOD

CAPE NINILC

090



1 inch equals 200 feet

JANUARY 15, 2008

For 2008 assessment roll		
Delete	Add	Revise
To		
12-15		

Assessor's Map
Kenai Peninsula Borough

SHORT SUB HM0840083
 SHORT SUB LONG ACRES ADDN HM0840117
 SHORT SUB LONG ACRES NO 2 HM0840118
 HOLLYWOOD SUB SARGEANT ADDN HM2007139

This map is prepared
 for Kenai Peninsula
 Borough Assessing Dept.
 use only and is not
 intended for conveyance
 nor is it a survey.

Note- Assessor's block Numbers Shown in Ellipses
 Assessor's Parcel Numbers Shown in Circles