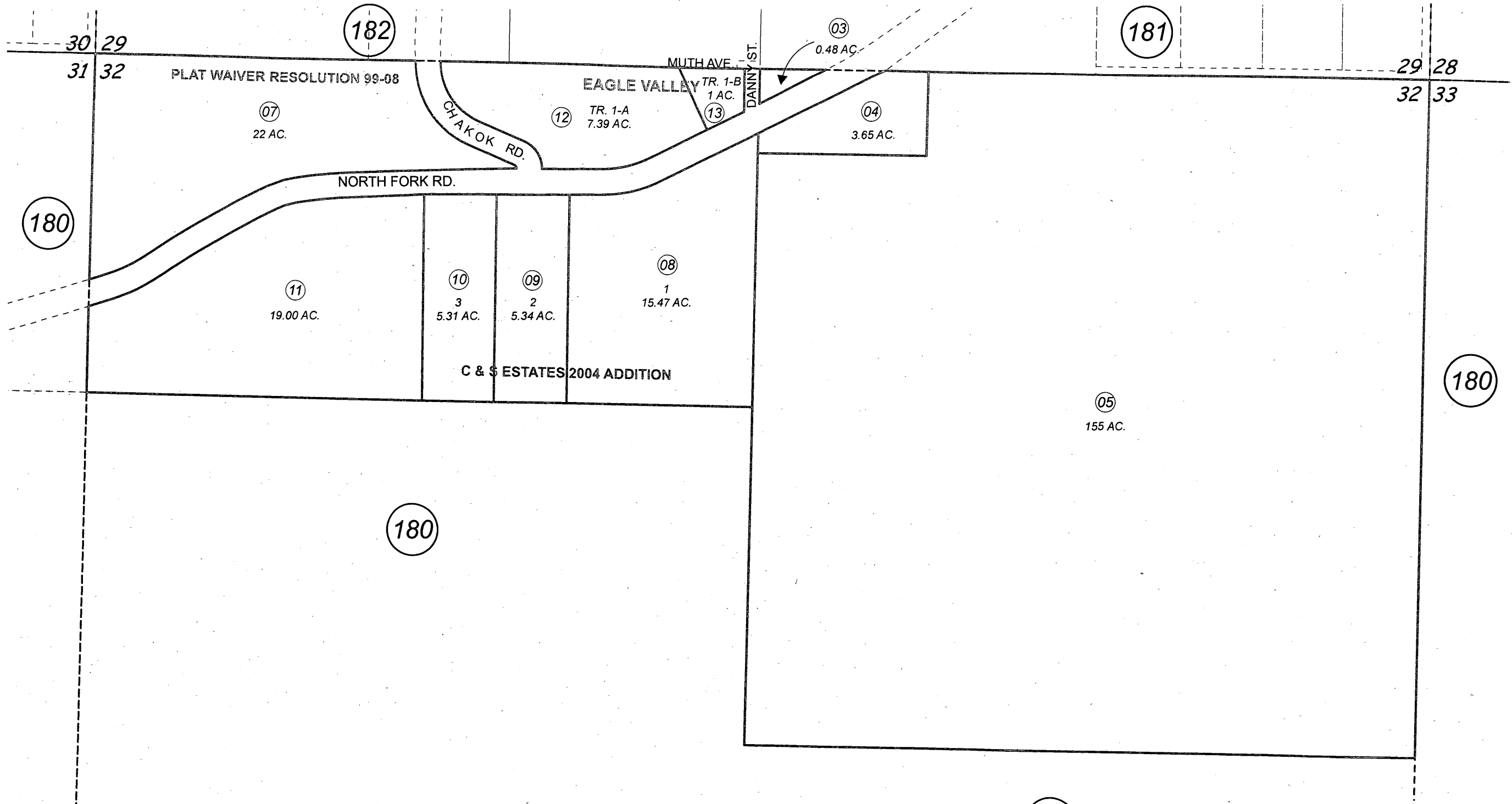


NE 1/4 & N 1/2 NW 1/4 SEC. 32, T04S, R14W, S.M.

165-183



APRIL 27, 2012

For 2013 assessment roll		
Delete	Add	Revise
To		
06	12,13	

Assessor's Map
Kenai Peninsula Borough

PLAT WAIVER RESOLUTION 99-08 HM001639PW
C & S ESTATES 2004 ADDN HM2004073
EAGLE VALLEY HM2012006

This map is prepared for Kenai Peninsula Borough Assessing Dept. use only and is not intended for conveyance nor is it a survey.
Note- Assessor's block Numbers Shown in Ellipses
Assessor's Parcel Numbers Shown in Circles