

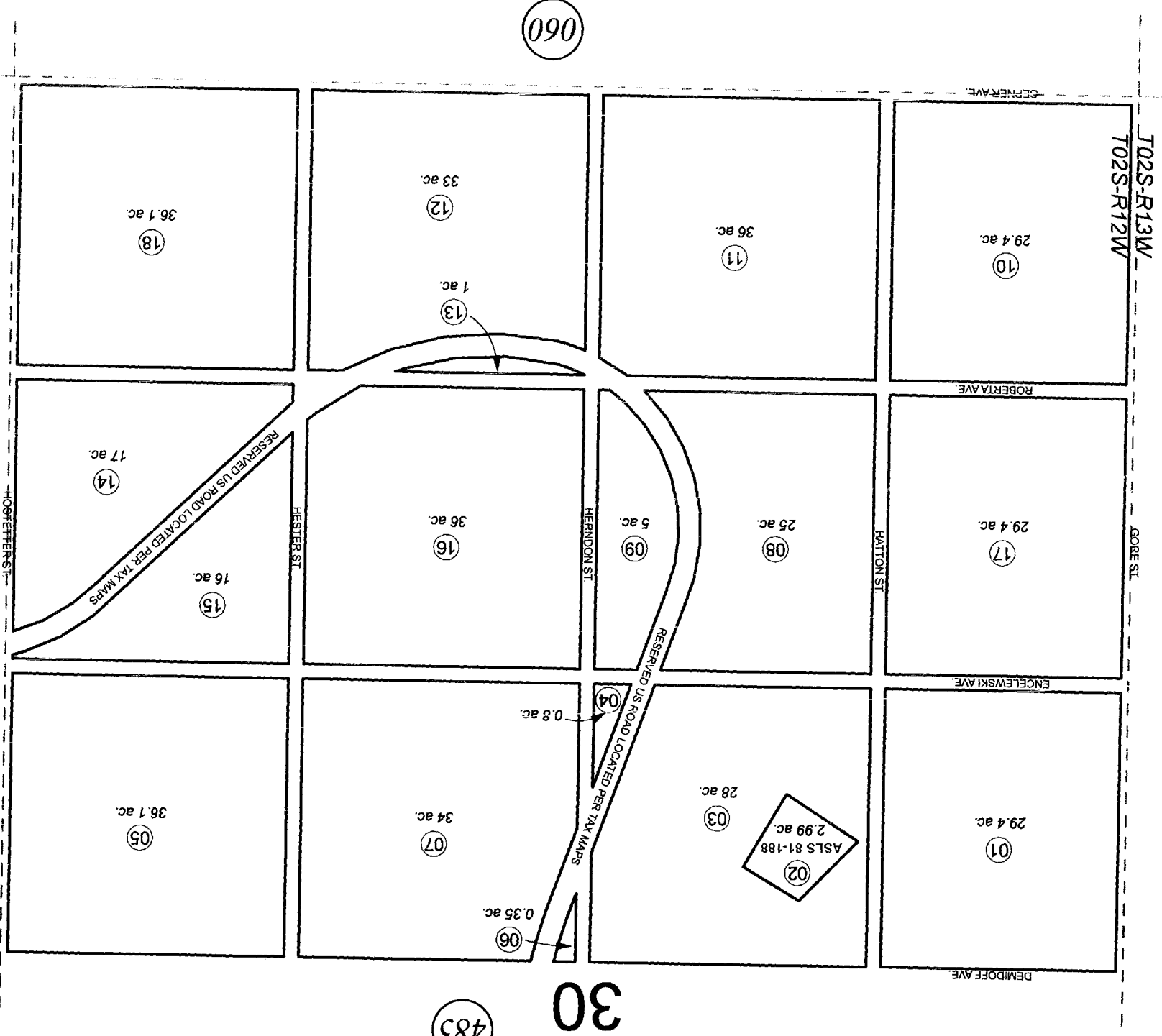
This map is prepared for Kenal Peninsula Borough Assessing Dept. use only and is not intended for conveyance nor is it a survey. Note - Assessor's block Numbers Shown in Ellipses Assessor's Parcel Numbers Shown in Circles

ASLS 81-188 HM0820033

Assessor's Map
Kenal Peninsula Borough

For 2011 assessment roll		
Delete	Add	Revise

JANUARY 25, 2011



060

060

050

485

30

185-486

S 3/4 SEC. 30, T02S, R12W, S.M.