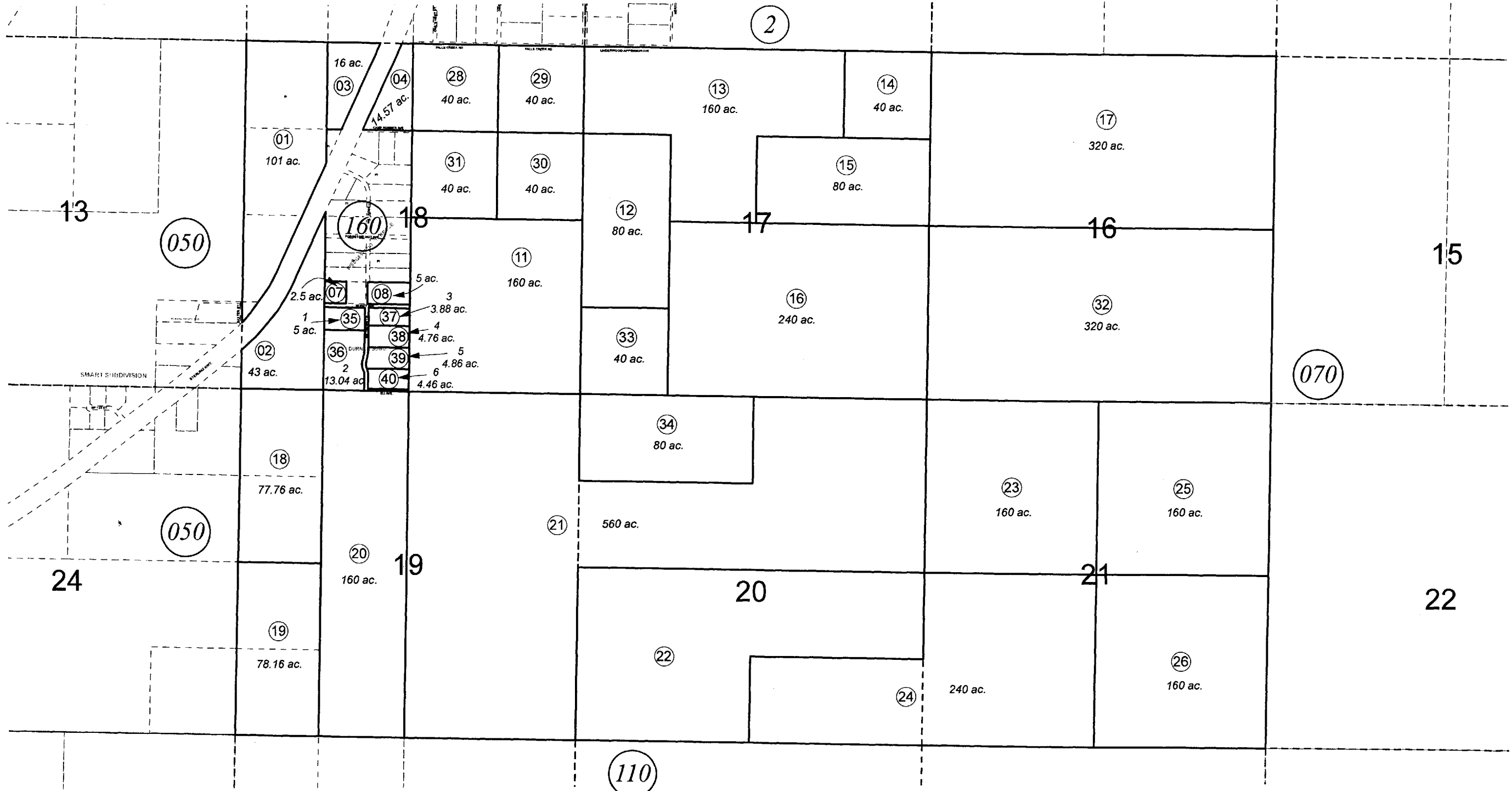


SEC. 16 - 21, T01N, R12W, S.M.

139-060



NOVEMBER 9, 2009

For 2010 assessment roll		
Delete	Add	Revise
To		
09	35-40	



0 500 1,000 2,000 Feet

Assessor's Map
Kenai Peninsula Borough

DURNAN SUB HM2009035

This map is prepared for Kenai Peninsula Borough Assessing Dept. use only and is not intended for conveyance nor is it a survey.
Note- Assessor's block Numbers Shown in Ellipses
Assessor's Parcel Numbers Shown in Circles