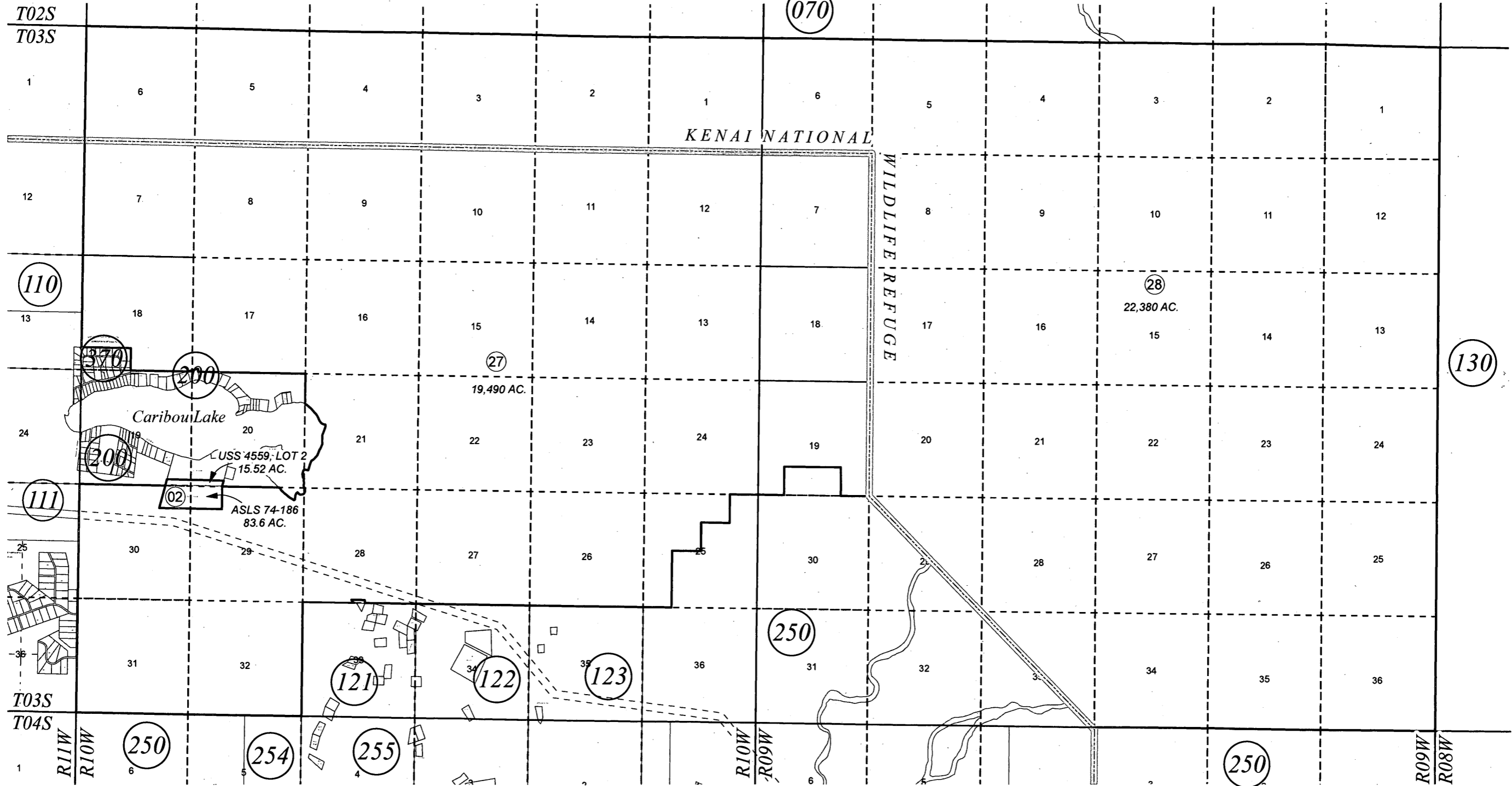
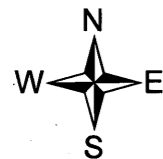


T03S, R09W, R10W, S.M.

185-120



JULY 2, 2012



For 2013 assessment roll		
Delete	Add	Revise
	To	
		02

Assessor's Map  
Kenai Peninsula Borough

ALASKA STATE LAND SURVEY 74-186

This map is prepared for Kenai Peninsula Borough Assessing Dept. use only and is not intended for conveyance nor is it a survey.  
Note- Assessor's block Numbers Shown in Ellipses  
Assessor's Parcel Numbers Shown in Circles