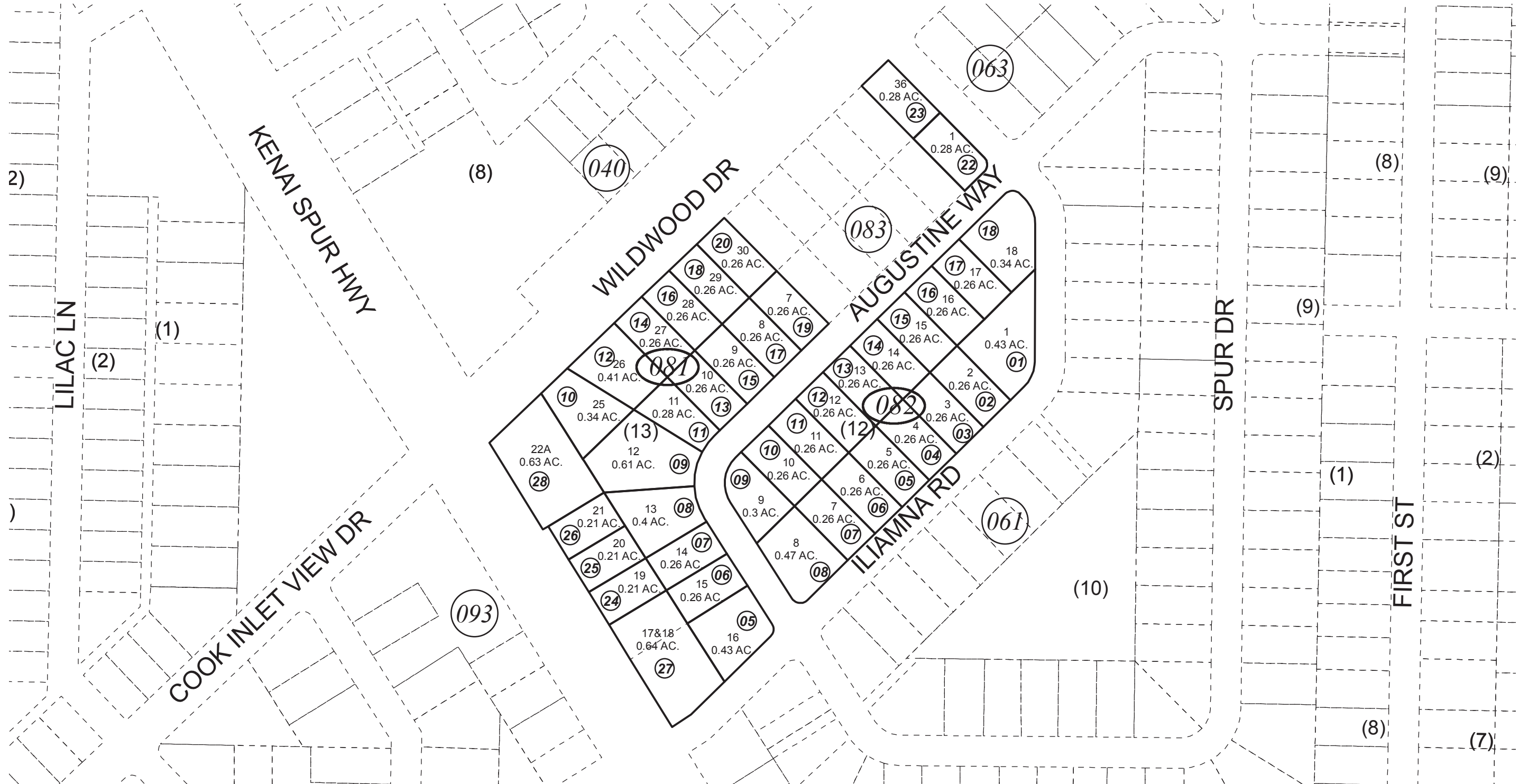
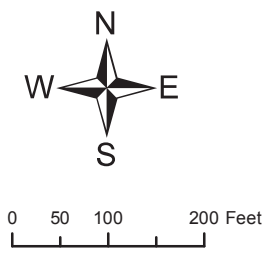


POR. SEC. 25, T06N, R12W, S.M.

039-080



DECEMBER 15, 2017



For 2018 assessment roll		
Delete	Add	Revise
To		
03908104	03908128	

Assessor's Map  
Kenai Peninsula Borough

CARL F AHSTROM SUB KN0000216  
CARL F AHSTROM SUB RPM'S REPLAT KN2017066

This map is prepared for Kenai Peninsula Borough Assessing Dept. use only and is not intended for conveyance nor is it a survey.  
Note- Assessor's block Numbers Shown in Ellipses  
Assessor's Parcel Numbers Shown in Circles