

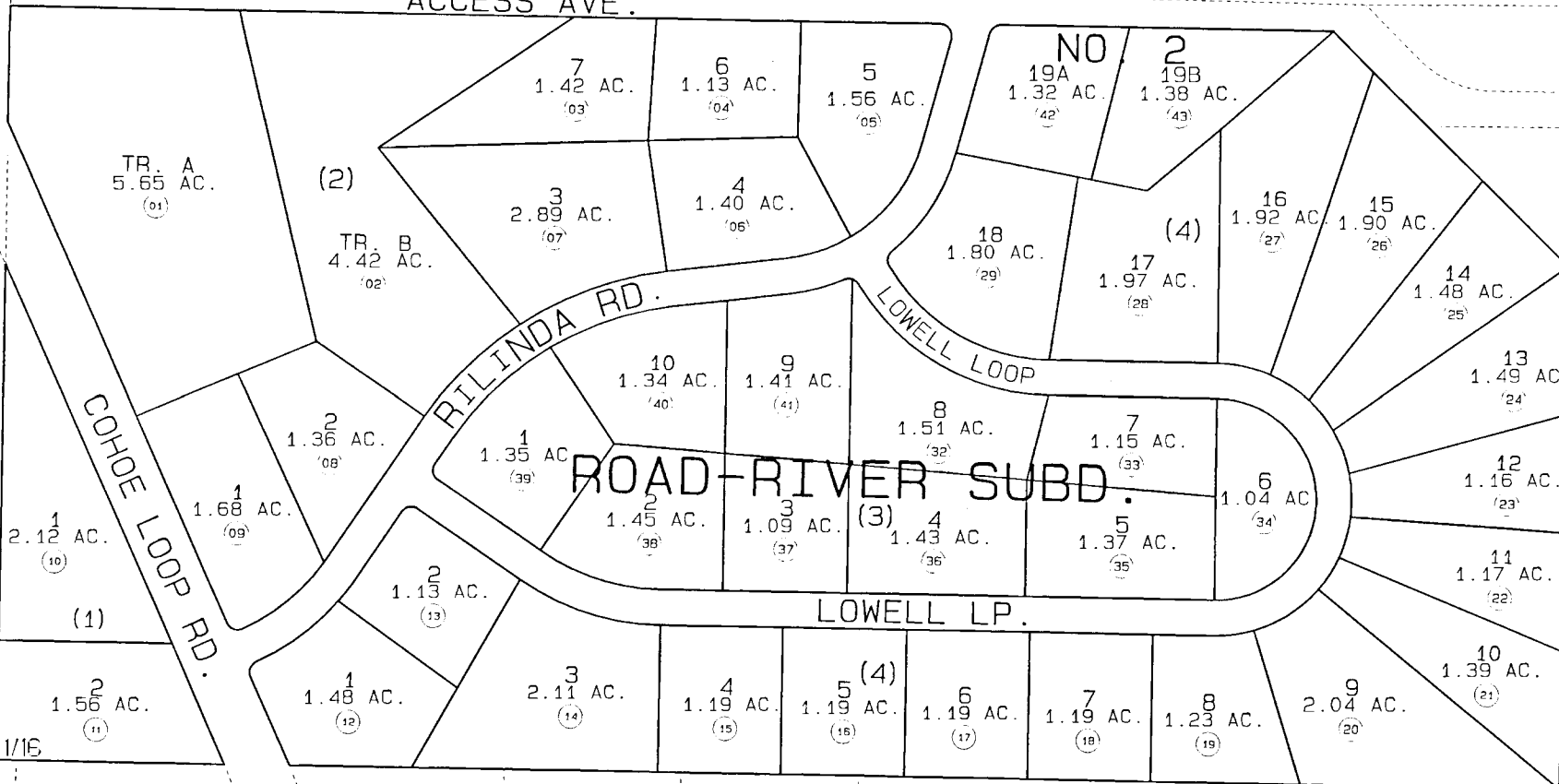
113

111

W 1/4

CEN 1/4

ACCESS AVE.



11

111

ROAD RIVER SUBD.

481

DATE: MAY 27, 1991

FOR 1995 ASSESSMENT ROLL

DELETE ADD REVISED

TO

30 12.13

ROAD RIVER (AMENDED) KN910329
ROAD RIVER NO. 2 KN910002

NOTE - Assessor's Block Numbers Shown in Ellipses
Assessor's Parcel Numbers Shown in Circles

Assessor's Map
Kenai Peninsula Borough

THIS MAP IS PREPARED FOR KENAI PENINSULA BOROUGH ASSESSING DEPT. USE ONLY AND IS NOT INTENDED FOR ANY OTHER USE OR REPRESENTATION